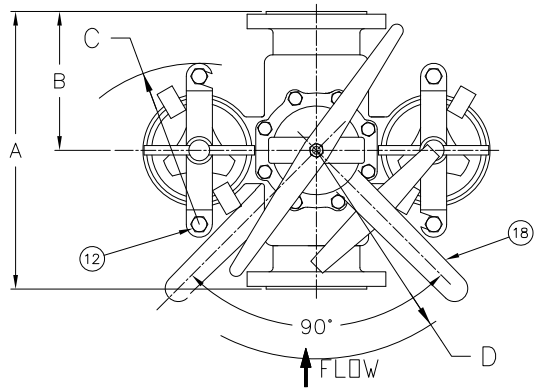
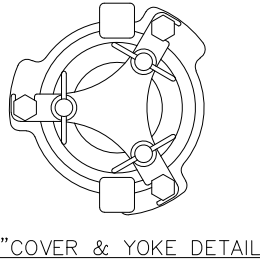
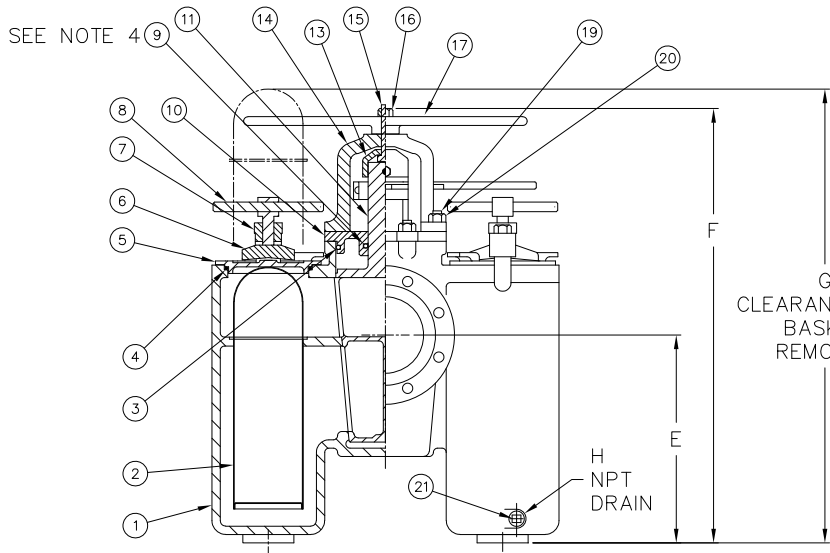


PIPE SIZE (NOMINAL)	DIMENSIONS												WEIGHT LBS. KGS.	PART NO.
	A IN. MM.	B IN. MM.	C IN. MM.	D IN. MM.	E IN. MM.	F IN. MM.	G IN. MM.	H (NOM.) IN. MM.	J IN. MM.	K IN. MM.	L IN. MM.			
5" (125mm)	18.00 / 457	9.00 / 229	10.25 / 260	19.75 / 502	14.75 / 375	33.25 / 845	41.00 / 1041	3/8 / 10	17.19 / 437	0.53 / 13	9.75 / 248	412 / 187	ST0500500F11C	
6" (150mm)	21.50 / 546	10.75 / 273	11.75 / 298	19.75 / 502	15.13 / 384	34.25 / 870	42.00 / 1067	3/8 / 10	21.25 / 540	0.63 / 16	11.25 / 286	583 / 264	ST0500600F11C	
8" (200mm)	25.00 / 635	14.00 / 356	-- / --	28.00 / 711	23.06 / 586	50.63 / 1286	56.00 / 1422	1/2 / 15	30.75 / 781	0.94 / 24	17.00 / 432	1725 / 782	ST0500800F11C	



NOTES:

1. INLET/OUTLET FLANGE CONNECTIONS PER ASME B16.24 .
2. SIZES 5" & 6" USES COVER CLAMP (ITEM 6).
3. MAX. WORKING PRESSURE: 5" & 6" SIZES.
200 PSI @ 100°F (13.8 BAR @ 37.8°C)
MAX. WORKING PRESSURE: 8" SIZE.
150 PSI @ 100°F (10.3 BAR @ 37.8°C)
4. SIZE 5" USE PACKING AND PACKING GLAND IN LIEU OF O-RING.



21	DRAIN PLUG	BRASS
20	BONNET STUD NUT	CARBON STEEL
19	BONNET STUD	ALLOY STEEL
18	TURNING HANDLE	DUCTILE IRON
17	LIFTING HANDLE	DUCTILE IRON
16	JACKSCREW NUT	CARBON STEEL
15	JACKSCREW	STEEL
14	JACK BONNET	DUCTILE IRON
13	JACK COLLAR	DUCTILE IRON
12	YOKE STUD	STEEL
11	DIVERTER PLUG	BRONZE B148 ALLOY 954
10	BONNET	BRONZE B148 ALLOY 954
9	O-RING	BUNA-N (SEE NOTE 4)
8	YOKE SCREW AND PIN ASSY	CARBON STEEL
7	YOKE	DUCTILE IRON
6	COVER CLAMP	DUCTILE IRON
5	COVER	BRONZE B148 ALLOY 954
4	O-RING	BUNA-N
3	O-RING (SIZE - 6") GASKET (SIZE - 8")	BUNA-N NON-ASBESTOS
2	BASKET PERF. DIA. MESH	
1	BODY	BRONZE B148 ALLOY 954
ITEM	PART NUMBER	MATERIAL

PART LIST FOR:

DRAWN BY FM SCALE AS DRAWN RESTRICTION RESTRICTED SHEET 1 OF 1 PROJECTION THIRD ANGLE	HYDRAULICS GROUP FILTRATION DIVISION GALESBURG, MICHIGAN, USA • TINTON FALLS, NEW JERSEY, USA TITLE MODEL 50 DUPLEX STRAINER 150# FLAT FACE FLANGE SIZES 5" THRU 8" BRONZE DATE 1/6/94 SIZE A DWG FILENAME SD051092 REV L
--	--

CUSTOMER INFO

NAME	
P.O. NO.	
TAG NO.	
S.O. NO.	
PART NO.	

L	REVISED DIM. LETTER & TABLE	FM	0531552	9/11/23
K	DIM. "F" ON TOP VIEW WAS "C"	FM	0530992	8/10/23
J	UPDATED TITLE BLOCK	S. PATIL	0112361	7/15/15
-	NEW RELEASE	FM	0067315	2/22/2012
REV	DESCRIPTION	BY	ECO	DATE
REVISIONS				

EATON CORPORATION - CONFIDENTIAL AND PROPRIETARY NOTICE TO PERSONS RECEIVING THIS DRAWING AND/OR TECHNICAL INFORMATION
THIS DOCUMENT, INCLUDING THE DRAWING AND INFORMATION CONTAINED THEREON IS CONFIDENTIAL AND IS THE EXCLUSIVE PROPERTY OF EATON AT ANY TIME. BY TAKING THE
POSSESSION OF THIS DOCUMENT THE RECIPIENT ACKNOWLEDGES AND AGREES THAT THIS DOCUMENT CANNOT BE USED IN ANY MANNER ADVERSE TO THE INTEREST OF EATON AND
THAT NO PORTION OF THIS DRAWING MAY BE COPIED OR OTHERWISE REPRODUCED WITHOUT THE PRIOR WRITTEN CONSENT OF EATON. IN THE CASE OF CONFLICTING CONTRACTUAL
PROVISIONS, THIS NOTICE SHALL GOVERN THE STATUS OF THIS DOCUMENT.
2023 EATON CORPORATION - ALL RIGHTS RESERVED.