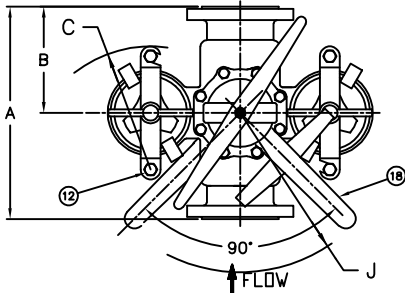
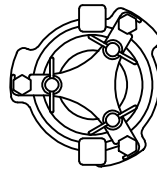
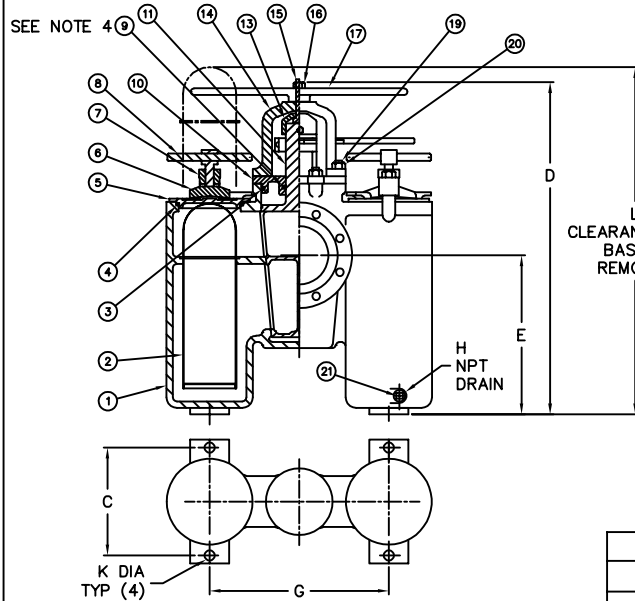


PIPE SIZE (NOMINAL)	DIMENSIONS												WEIGHT LBS. KGS.	PART NO.											
	IN.	MM.	IN.	MM.	IN.	MM.	IN.	MM.	IN.	MM.	IN.	MM.													
5" (125mm)	18.00	/ 457	9.00	/ 229	9.75	/ 248	33.25	/ 845	14.75	/ 375	10.25	/ 260	17.19	/ 437	3/8	/ 10	19.75	/ 502	0.53	/ 13	41.00	/ 1041	412	/ 187	ST0500500F11C
6" (150mm)	21.50	/ 546	10.75	/ 273	11.25	/ 286	34.25	/ 870	15.13	/ 384	11.75	/ 298	21.25	/ 540	3/8	/ 10	19.75	/ 502	0.63	/ 16	42.00	/ 1067	583	/ 264	ST0500600F11C
8" (200mm)	25.00	/ 635	14.00	/ 356	17.00	/ 432	50.63	/ 1286	23.06	/ 586	--	/ --	30.75	/ 781	1/2	/ 15	28.00	/ 711	0.94	/ 24	56.00	/ 1422	1725	/ 782	ST0500800F11C



NOTES:

1. INLET/OUTLET FLANGE CONNECTIONS PER ASME B16.24 .
2. SIZES 5" & 6" USES COVER CLAMP (ITEM 6).
3. MAX. WORKING PRESSURE: 5" & 6" SIZES.
200 PSI @ 100°F (13.8 BAR @ 37.8°C)
MAX. WORKING PRESSURE: 8" SIZE.
150 PSI @ 100°F (10.3 BAR @ 37.8°C)
4. SIZE 5" USE PACKING AND PACKING GLAND IN LIEU OF O-RING.



8" COVER & YOKE DETAIL

21	DRAIN PLUG	BRASS
20	BONNET STUD NUT	CARBON STEEL
19	BONNET STUD	ALLOY STEEL
18	TURNING HANDLE	DUCTILE IRON
17	LIFTING HANDLE	DUCTILE IRON
16	JACKSCREW NUT	CARBON STEEL
15	JACKSCREW	STEEL
14	JACK BONNET	DUCTILE IRON
13	JACK COLLAR	DUCTILE IRON
12	YOKE STUD	STEEL
11	DIVERTER PLUG	BRONZE B148 ALLOY 954
10	BONNET	BRONZE B148 ALLOY 954
9	O-RING	BUNA-N (SEE NOTE 4)
8	YOKE SCREW AND PIN ASSY	CARBON STEEL
7	YOKE	DUCTILE IRON
6	COVER CLAMP	DUCTILE IRON
5	COVER	BRONZE B148 ALLOY 954
4	O-RING	BUNA-N
3	O-RING (SIZE - 6") GASKET (SIZE - 8")	BUNA-N NON-ASBESTOS
2	BASKET PERF. DIA. MESH	
1	BODY	BRONZE B148 ALLOY 954
ITEM	PART NUMBER	MATERIAL

PART LIST FOR:

DRAWN BY FM	HYDRAULICS GROUP
SCALE AS DRAWN	FILTRATION DIVISION GALESBURG, MICHIGAN, USA • TINTON FALLS, NEW JERSEY, USA
RESTRICTION RESTRICTED	TITLE MODEL 50 DUPLEX STRAINER 150# FLAT FACE FLANGE SIZES 5" THRU 8" BRONZE
SHEET 1 OF 1	
PROJECTION THIRD ANGLE	DATE 1/6/94
	SIZE A
	DWG FILENAME SD051092
	REV J

CUSTOMER INFO	
NAME	
P.O. NO.	
TAG NO.	
S.O. NO.	
PART NO.	

REV	DESCRIPTION	BY	ECO	DATE
J	UPDATED TITLE BLOCK	S. PATIL	0112361	7/15/15
-	NEW RELEASE	FM	0067315	2/23/2012

REVISIONS

EATON CORPORATION - CONFIDENTIAL AND PROPRIETARY NOTICE TO PERSONS RECEIVING THIS DRAWING AND/OR TECHNICAL INFORMATION
THIS DOCUMENT, INCLUDING THE DESIGN AND INFORMATION CONTAINED HEREIN IS CONFIDENTIAL AND IS THE EXCLUSIVE PROPERTY OF EATON. AT ANY TIME, BY THE USE OR REPRODUCTION OF THIS DOCUMENT THE RECIPIENT ACKNOWLEDGES AND AGREES THAT THIS DOCUMENT CANNOT BE USED IN ANY MANNER IN VIOLATION OF THE INTERESTS OF EATON AND THAT NO PORTION OF THIS DRAWING MAY BE COPIED OR OTHERWISE REPRODUCED WITHOUT THE PRIOR WRITTEN CONSENT OF EATON, IN THE CASE OF CONTRACTING ORGANIZATION. PROVISIONS, THIS NOTICE SHALL GOVERN THE STATUS OF THIS DOCUMENT.
©2015 EATON CORPORATION - ALL RIGHTS RESERVED.