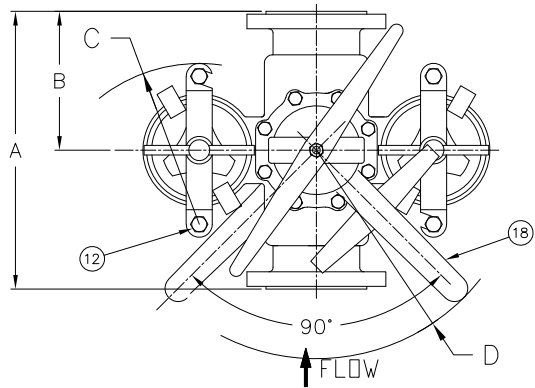
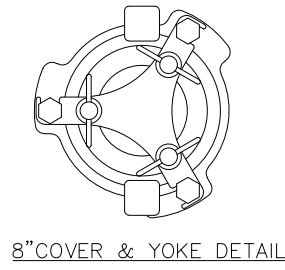
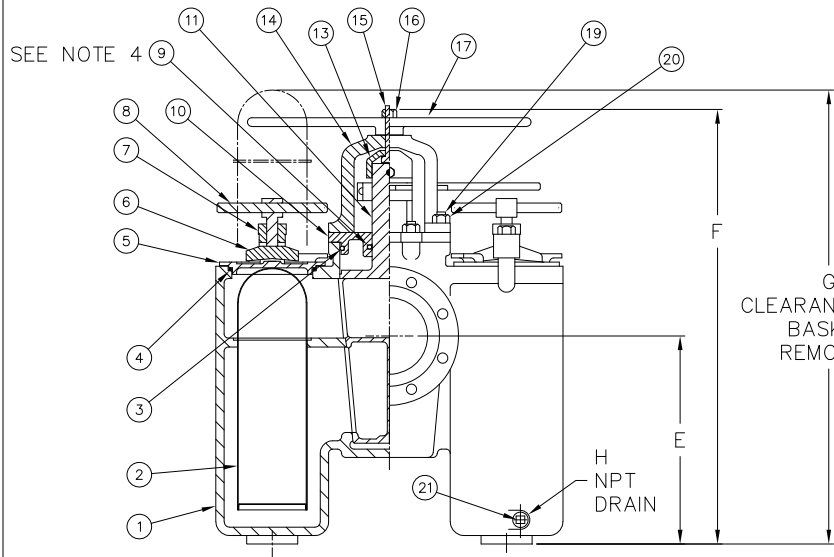


PIPE SIZE (NOMINAL)	DIMENSIONS												WEIGHT		PART NO.
	A IN. MM.	B IN. MM.	C IN. MM.	D IN. MM.	E IN. MM.	F IN. MM.	G IN. MM.	H (NOM.) IN. MM.	J IN. MM.	K IN. MM.	L IN. MM.	LBS.	KGS.		
5" (125mm)	18.38 / 467	9.00 / 229	10.25 / 260	19.75 / 502	14.75 / 375	33.25 / 845	41.00 / 1041	3/8 / 10	17.19 / 437	0.56 / 14	9.75 / 248	403 / 183		ST0500500F41C	
6" (150mm)	22.00 / 559	12.88 / 327	11.75 / 298	19.75 / 502	19.50 / 495	36.25 / 921	42.00 / 1067	3/8 / 10	20.75 / 527	0.63 / 16	12.50 / 318	500 / 227		ST0500600F41C	
8" (200mm)	25.00 / 635	14.00 / 356	-- / --	28.00 / 711	23.06 / 586	50.63 / 1286	56.00 / 1422	1/2 / 15	30.75 / 781	0.94 / 24	17.00 / 432	1500 / 682		ST0500800F41C	



NOTES:

1. INLET/OUTLET FLANGE CONNECTIONS PER ASME B16.1
2. SIZES 5" & 6" USES COVER CLAMP (ITEM 6).
3. MAX. WORKING PRESSURE: 5" & 6" SIZES.
200 PSI @ 100°F (13.8 BAR @ 37.8°C)
MAX. WORKING PRESSURE: 8" SIZE.
150 PSI @ 100°F (10.3 BAR @ 37.8°C)
4. SIZE 5" USE PACKING AND PACKING GLAND IN LIEU OF O-RING.



ITEM	PART NUMBER	MATERIAL
21	DRAIN PLUG	CARBON STEEL
20	BONNET STUD NUT	CARBON STEEL
19	BONNET STUD	ALLOY STEEL
18	TURNING HANDLE	DUCTILE IRON
17	LIFTING HANDLE	DUCTILE IRON
16	JACKSCREW NUT	CARBON STEEL
15	JACKSCREW	STEEL
14	JACK BONNET	DUCTILE IRON
13	JACK COLLAR	DUCTILE IRON
12	YOKE STUD	STEEL
11	DIVERTER PLUG	BRONZE ASTM B62
10	BONNET	CAST IRON ASTM A126 CL.B
9	O-RING	BUNA-N (SEE NOTE 4)
8	YOKE SCREW AND PIN ASSY	CARBON STEEL
7	YOKE	DUCTILE IRON
6	COVER CLAMP	DUCTILE IRON
5	COVER	CAST IRON ASTM A126 CL.B
4	O-RING	BUNA-N
3	O-RING (SIZE - 6") GASKET (SIZE - 8")	BUNA-N NON-ASBESTOS
2	BASKET PERF. DIA. MESH	
1	BODY	CAST IRON ASTM A126 CL.B
ITEM	PART NUMBER	MATERIAL

PART LIST FOR:

DRAWN BY FC SCALE AS DRAWN RESTRICTION RESTRICTED SHEET 1 OF 1 PROJECTION THIRD ANGLE	HYDRAULICS GROUP FILTRATION DIVISION GALESBURG, MICHIGAN, USA • TINTON FALLS, NEW JERSEY, USA TITLE MODEL 50 DUPLEX STRAINER 125# FLAT FACE FLANGE SIZES 5" THRU 8" CAST IRON DATE 2/13/92 SIZE A DWG FILENAME SD051091 REV L
EATON CORPORATION - CONFIDENTIAL AND PROPRIETARY NOTICE TO PERSONS RECEIVING THIS DRAWING AND/OR TECHNICAL INFORMATION THIS DOCUMENT, INCLUDING THE DRAWING AND INFORMATION CONTAINED THEREON IS CONFIDENTIAL AND IS THE EXCLUSIVE PROPERTY OF EATON AT ANY TIME. BY TAKING THE POSSESSION OF THIS DOCUMENT THE RECIPIENT ACKNOWLEDGES AND AGREES THAT THIS DOCUMENT CANNOT BE USED IN ANY MANNER ADVERSE TO THE INTEREST OF EATON AND THAT NO PORTION OF THIS DRAWING MAY BE COPIED OR OTHERWISE REPRODUCED WITHOUT THE PRIOR WRITTEN CONSENT OF EATON. IN THE CASE OF CONFLICTING CONTRACTUAL PROVISIONS, THIS NOTICE SHALL GOVERN THE STATUS OF THIS DOCUMENT. 2023 EATON CORPORATION - ALL RIGHTS RESERVED.	

CUSTOMER INFO			
NAME			
P.O. NO.			
TAG NO.			
S.O. NO.			
PART NO.			

L	REVISED DIM. LETTER & TABLE	FM	0531552	9/11/2023
K	UPDATED TITLE BLOCK	S. PATIL	0112361	7/21/2015
-	NEW RELEASE	FC	D507	10/31/2005
REV	DESCRIPTION	BY	ECO	DATE
REVISIONS				