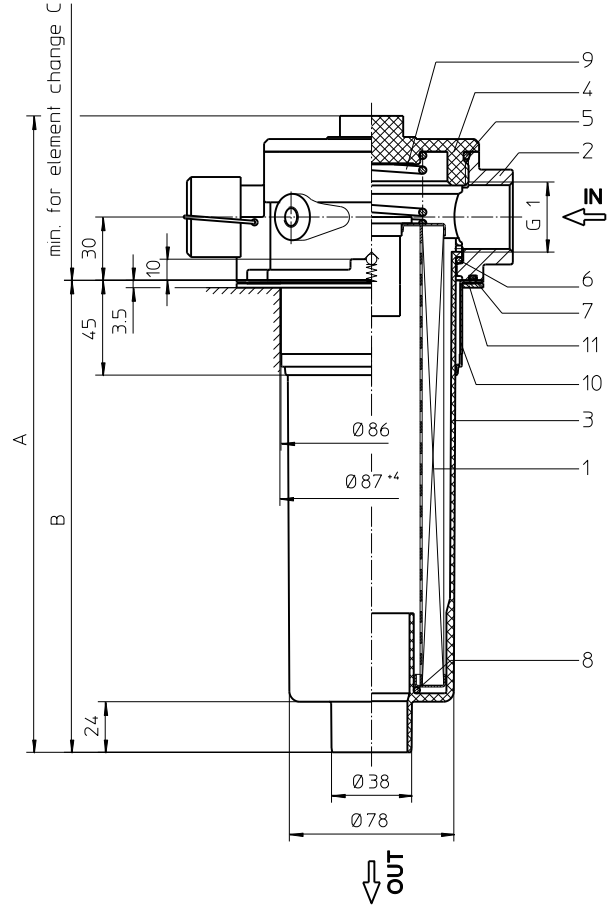
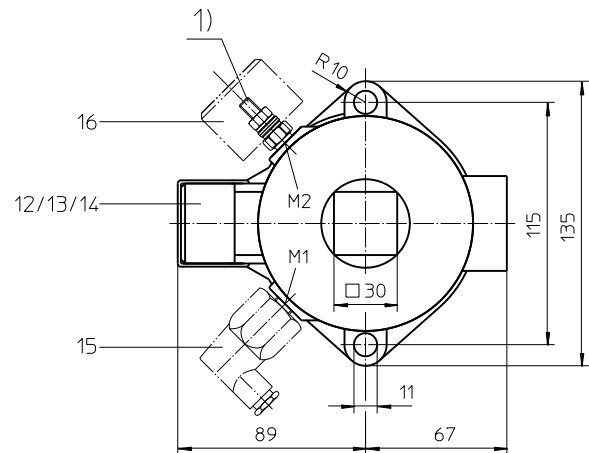


# Series TEFB 210-310 DN25 PN10



**Dimensions:**

type	TEFB 210	TEFB 310
A	302	387
B	224	309
C	350	435
weight kg	2,1	2,3
volume tank	1,0 l	1,4 l



- 1) Connection for the potential equalization, only for application in the explosive area.

Dimensions: mm

Designs and performance values are subject to change!

# Return Line Filter

## Series TEFB 210-320

### DN25 PN10

#### Description:

Return-line filter series TEFB 210-310 have a working pressure up to 10 bar. Pressure peaks will be absorbed by a sufficient margin of safety.

The TEFB-filters are directly mounted to the reservoir and connected to the return-line. No connection is needed for the build-in air filter. The air filter has a 10 µm disposable element.

The filter element consists of a star-shaped, pleated filter material which is supported on the inside by a perforated core tube and is bonded to the end caps with a high-quality adhesive. The flow is from outside to inside.

For cleaning the stainless steel mesh element (see special leaflets 21070-4 and 39448-4) or changing the filter element, remove the cover and take out the element. The mesh elements are not guaranteed to maintain 100% performance after cleaning.

Filters finer than 40 µm use the disposable elements made of paper or microglass. Filter elements as fine as 5 µm(c) are available; finer filter elements on request.

Eaton filter elements are known as stable elements which have excellent filtration capabilities and a high dirt retaining capacity, therefore having a long service life. Due to its practical design, the return-line filter is easy to service.

Eaton filter can be used for petroleum-based fluids, HW emulsions, water glycols, most synthetic fluids and lubrication fluids. Consult factory for specific fluid applications.

When changing the filter element, a detachable connection between the filter head and the filter bowl prevents dirty oil from flowing into the tank.

#### 1. Type index:

##### 1.1. Complete filter: (ordering example)

**TEFB. 210. 10VG. 16. S. P. -. G. 5. -. E1. O. 1**

1	2	3	4	5	6	7	8	9	10	11	12	13
---	---	---	---	---	---	---	---	---	----	----	----	----

- |    |   |
|----|---|
| 1  | <b>series:</b><br>TEFB = tank-mounted return-line-filter with breather filter   |
| 2  | <b>nominal size:</b> 210, 310   |
| 3  | <b>filter-material:</b><br>80G, 40G, 25G stainless steel wire mesh<br>25VG, 16VG, 10VG, 6VG, 3VG microglass<br>10P paper  |
| 4  | <b>filter element collapse rating:</b><br>16 = Δp 16 bar  |
| 5  | <b>filter element design:</b><br>E = without by-pass valve<br>S = with by-pass valve Δp 2,0 bar   |
| 6  | <b>sealing material:</b><br>P = Nitrile (NBR)<br>V = Viton (FPM)  |
| 7  | <b>filter element specification:</b><br>- = standard<br>IS06 = for HFC application, see sheet-no. 31601   |
| 8  | <b>process connection:</b><br>G = thread connection according to DIN 3852, T2   |
| 9  | <b>process connection size:</b><br>5 = G 1  |
| 10 | <b>filter housing specification:</b><br>- = standard<br>IS06 = for HFC application, see sheet-no. 31605<br>IS10 = for ATEX, see sheet-no. 68267   |
| 11 | <b>clogging indicator at M1:</b><br>- = without<br>O = visual, see sheet-no. 1616<br>E1 = pressure switch, see sheet-no. 1616<br>E2 = pressure switch, see sheet-no. 1616<br>E5 = pressure switch, see sheet-no. 1616<br>PA = ground connection |
| 12 | <b>clogging indicator at M2:</b><br>possible indicators see position 11 of the type index   |
| 13 | <b>oil separator:</b><br>- = without<br>1 = with oil separator  |

To add an indicator to your filter, use the corresponding indicator data sheet to find the indicator details and add them to the filter assembly model code.

##### 1.2. Filter element: (ordering example)

**01E. 210. 10VG. 16. S. P. -**

1	2	3	4	5	6	7
---	---	---	---	---	---	---

- |   |   |
|---|---|
| 1 | <b>series:</b><br>01E. = filter element according to company standard |
| 2 | <b>nominal size:</b> 210, 320   |
| 3 | - 7   see type index-complete filter                                  |

## Technical data:

operating temperature:	-10°C to +100°C
operating medium	mineral oil, other media on request
max. operating pressure:	10 bar
opening pressure by-pass valve:	2,0 bar
process connection:	thread connection according to DIN 3852, T2
housing material standard:	filter head AL, screw plug / filter bowl glass fibre reinforced polyamide
housing material IS10, category 2 and 3:	filter head AL, screw plug / filter bowl carbon fibre reinforced polyamide
sealing material:	Nitrile (NBR) or Viton (FPM), other materials on request
installation position:	vertical

Classified under the Pressure Equipment Directive 2014/68/EU for mineral oil (fluid group 2), Article 4, Para. 3.  
 Classified under ATEX Directive 2014/34/EU according to specific application (see questionnaire sheet-no. 34279-4).

## Pressure drop flow curves:

### Filter calculation/sizing

The pressure drop of the assembly at a given flow rate Q is the sum of the housing  $\Delta p$  and the element  $\Delta p$  and is calculated as follows:

$$\Delta p_{assembly} = \Delta p_{housing} + \Delta p_{element}$$

$$\Delta p_{housing} = (\text{see } \Delta p = f(Q) \text{ - characteristics})$$

$$\Delta p_{Element} (mbar) = Q \left( \frac{l}{min} \right) \times \frac{MSK}{10} \left( \frac{mbar}{l/min} \right) \times v \left( \frac{mm^2}{s} \right) \times \frac{p}{0,876} \left( \frac{kg}{dm^3} \right)$$

For ease of calculation our Filter Selection tool is available online at [www.eaton.com/hydraulic-filter-evaluation](http://www.eaton.com/hydraulic-filter-evaluation)

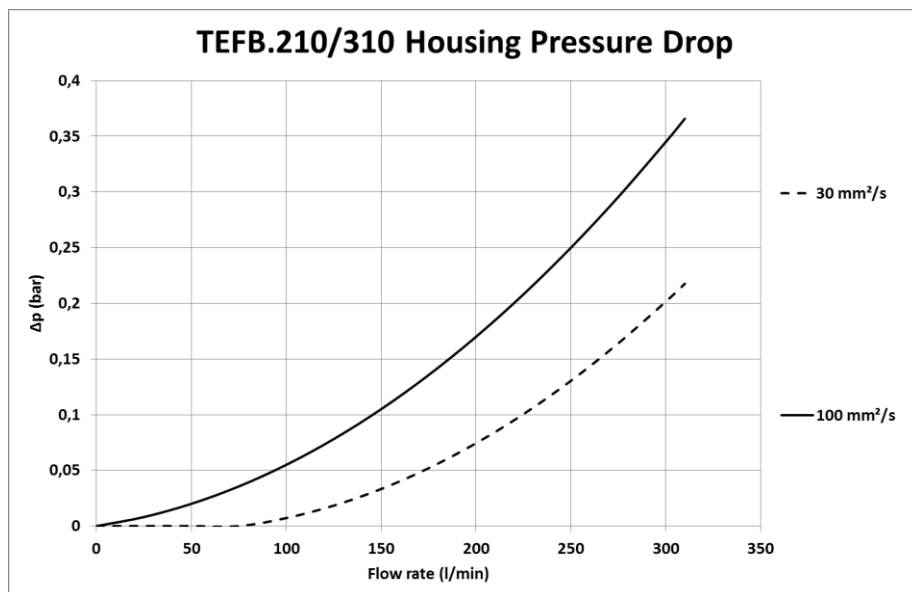
### Material gradient coefficients (MSK) for filter elements

The material gradient coefficients in mbar/(l/min) apply to mineral oil (HLP) with a density of 0,876 kg/dm<sup>3</sup> and a kinematic viscosity of 30 mm<sup>2</sup>/s (139 SUS). The pressure drop changes proportionally to the change in kinematic viscosity and density.

TEFB	VG					G			P
	3VG	6VG	10VG	16VG	25VG	25G	40G	80G	10P
210	1,327	0,922	0,590	0,514	0,351	0,0480	0,0448	0,0307	0,288
310	0,953	0,661	0,423	0,369	0,252	0,0275	0,0257	0,0176	0,206

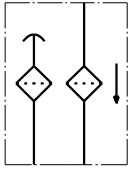
### $\Delta p = f(Q)$ – characteristics according to ISO 3968

The pressure drop characteristics apply to mineral oil (HLP) with a density of 0,876 kg/dm<sup>3</sup>. The pressure drop changes proportionally to the density.

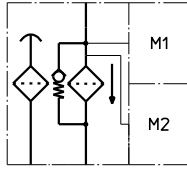


## Symbols:

without indicator



with by-pass valve



visual O



electric contact maker  
E1



electric contact breaker  
E5



electric contact maker/breaker  
E2



## Spare parts:

item	qty.	designation	dimension		article-no.	
			TEFB 210	TEFB 310		
1	1	filter element	01.E 210...	01E. 320...		
2	1	filter head	TNR 100			
3	1	filter bowl	NG 210	NG 310		
4	1	filter cover	M 92 x 3			
5	1	O-ring	82 x 3,5		304403 (NBR)	308745 (FPM)
6	1	O-ring	75 x 3		302215 (NBR)	304729 (FPM)
7	1	O-ring	95 x 3		305808 (NBR)	304828 (FPM)
8	1	O-ring	40 x 3		304991 (NBR)	304997 (FPM)
9	1	spring	DA = 52		305053	
10	1	oil separator			321084	
11	1	gasket (with execution oil separator)	2 thick		325389	
12	1	filter element breather	01BFE. 120		301866	
13	1	protection cap			303048	
14	1	clip			303046	
15	1	clogging indicator electrical	E1, E2 or E5		see sheet-no. 1616	
16	1	clogging indicator visual	O		301721	

## Test methods:

Filter elements are tested according to the following ISO standards:

ISO 2941	Verification of collapse/burst resistance
ISO 2942	Verification of fabrication integrity
ISO 2943	Verification of material compatibility with fluids
ISO 3723	Method for end load test
ISO 3724	Verification of flow fatigue characteristics
ISO 3968	Evaluation of pressure drop versus flow characteristics
ISO 16889	Multi-pass method for evaluating filtration performance

### North America

44 Apple Street  
Tinton Falls, NJ 07724  
Toll Free: 800 656-3344  
(North America only)  
Tel: +1 732 212-4700

### Greater China

No. 7, Lane 280,  
Linhong Road  
Changning District, 200335  
Shanghai, P.R. China  
Tel: +86 21 5200-0099

### Europe/Africa/Middle East

Auf der Heide 2  
53947 Nettersheim, Germany  
Tel: +49 2486 809-0

Friedensstraße 41  
68804 Altlufheim, Germany  
Tel: +49 6205 2094-0

An den Nahewiesen 24  
55450 Langenlonsheim, Germany  
Tel: +49 6704 204-0

### Asia-Pacific

100G Pasir Panjang Road  
#07-08 Interlocal Centre  
Singapore 118523  
Tel: +65 6825-1668

For more information, please

email us at [filtration@eaton.com](mailto:filtration@eaton.com)

or visit [www.eaton.com/filtration](http://www.eaton.com/filtration)

© 2021 Eaton. All rights reserved. All trademarks and registered trademarks are the property of their respective owners. All information and recommendations appearing in this brochure concerning the use of products described herein are based on tests believed to be reliable. However, it is the user's responsibility to determine the suitability for his own use of such products. Since the actual use by others is beyond our control, no guarantee, expressed or implied, is made by Eaton as to the effects of such use or the results to be obtained. Eaton assumes no liability arising out of the use by others of such products. Nor is the information herein to be construed as absolutely complete, since additional information may be necessary or desirable when particular or exceptional conditions or circumstances exist or because of applicable laws or government regulations.