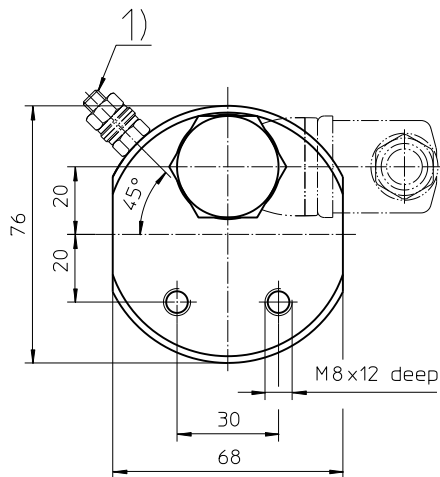
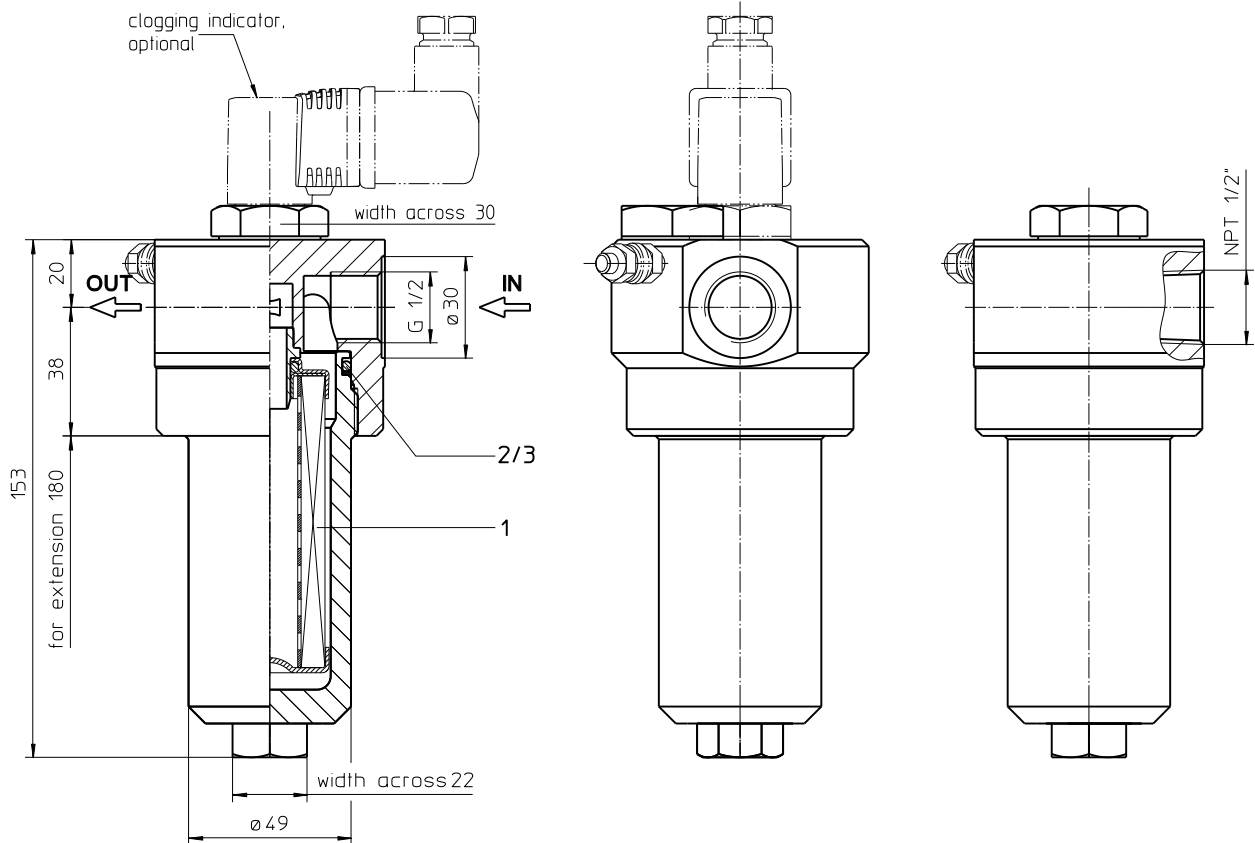


Series EH 31

DN15 PN420



- 1) Connection for the potential equalization, only for application in the explosive area.

Weight: approx. 3 kg

Dimensions: mm

Designs and performance values are subject to change.

Pressure Filter

Series EH 31

DN15 PN420

Description:

Stainless steel pressure filter series EH 31 have a working pressure up to 420 bar. Pressure peaks can be absorbed with a sufficient safety margin. The EH-filter is in-line mounted.

The filter element consists of star-shaped, pleated filter material, which is supported on the inside by a perforated core tube and is bonded to the end caps with a high-quality adhesive. The flow direction is from outside to inside. Filter elements are available down to 5 $\mu\text{m}_{(c)}$.

Eaton filter elements are known for high intrinsic stability and an excellent filtration capability, a high dirt-retaining capacity and a long service life.

Eaton filter elements are available up to a pressure resistance of Δp 160 bar and a rupture strength of Δp 250 bar.

Eaton filter can be used for petroleum-based fluids, HW emulsions, water glycols, most synthetic fluids and lubrication fluids. Consult factory for specific fluid applications.

The internal valve is integrated into the filter head. After reaching the bypass pressure setting, the bypass valve will send unfiltered partial flow around the filter.

1. Type index:

1.1. Complete filter: (ordering example)

| | | | | | | | | | | | | |
|---|---|---|---|---|---|---|---|---|----|----|----|----|
| EH. 31. 10VG. HR. E. P. VA. G. 3. VA. - . - . AE | | | | | | | | | | | | |
| 1 | 2 | 3 | 4 | 5 | 6 | 7 | 8 | 9 | 10 | 11 | 12 | 13 |

- 1 series:**
EH = stainless steel-pressure filter
- 2 nominal size:** 31
- 3 filter-material:**
80G, 40G, 25G, stainless steel wire mesh
25VG, 16VG, 10VG, 6VG, 3VG microglass
- 4 filter element collapse rating:**
30 = Δp 30 bar
HR = Δp 160 bar (rupture strength Δp 250 bar)
- 5 filter element design:**
E = single-end open
- 6 sealing material:**
P = Nitrile (NBR)
V = Viton (FPM)
- 7 filter element specification:**
- = standard
VA = stainless steel
- 8 process connection:**
G = thread connection according to ISO 228
NPT = thread connection according to ANSI B1.20.1
- 9 process connection size:**
3 = 1/2"
- 10 filter housing specification:**
VA = stainless steel
- 11 specification pressure vessel:**
- = standard (PED 2014/68/EU)
IS20 = ASME VIII Div.1 with ASME equivalent material, see sheet-no. 55217 (max. operating pressure 280 bar)
- 12 internal valve:**
- = without
S1 = with by-pass valve Δp 3,5 bar
S2 = with by-pass valve Δp 7,0 bar
- 13 clogging indicator or clogging sensor:**
- = without
AOR = visual, see sheet-no. 1606
AOC = visual, see sheet-no. 1606
AE = visual-electric, see sheet-no. 1615
VS5 = electronic, see sheet-no. 1619

To add an indicator/sensor to your filter, use the corresponding indicator data sheet to find the indicator details and add them to the filter assembly model code.

1.2. Filter element: (ordering example)

| | | | | | | |
|------------------------------------|---|---|---|---|---|---|
| 01E. 30. 10VG. HR. E. P. VA | | | | | | |
| 1 | 2 | 3 | 4 | 5 | 6 | 7 |

- 1 series:**
01E. = filter element according to company standard
- 2 nominal size:** 30
- 3 - 7** | see type index-complete filter

Technical data:

| | |
|----------------------------------|--|
| operating temperature: | -10°C to +100°C |
| operating medium | mineral oil, other media on request |
| max. operating pressure: | 420 bar |
| test pressure: | 600 bar |
| max. operating pressure at IS20: | 280 bar |
| test pressure at IS20: | 364 bar |
| process connection: | thread connection |
| housing material: | EN10088-1.4571 (320 S 18, 320 S 31 according to B.S.) |
| sealing material: | Nitrile (NBR) or Viton (FPM), other materials on request |
| installation position: | vertical |
| volume tank: | 0,12 l |

Classified under the Pressure Equipment Directive 2014/68/EU for mineral oil (fluid group 2), Article 4, Para. 3.
Classified under ATEX Directive 2014/34/EU according to specific application (see questionnaire sheet-no. 34279-4).

Pressure drop flow curves:

Filter calculation/sizing

The pressure drop of the assembly at a given flow rate Q is the sum of the housing Δp and the element Δp and is calculated as follows:

$$\Delta p_{assembly} = \Delta p_{housing} + \Delta p_{element}$$

$$\Delta p_{housing} = (\text{see } \Delta p = f(Q) \text{ - characteristics})$$

$$\Delta p_{Element} (mbar) = Q \left(\frac{l}{min} \right) \times \frac{MSK}{10} \times v \left(\frac{mm^2}{s} \right) \times \frac{p}{0,876} \left(\frac{kg}{dm^3} \right)$$

For ease of calculation our Filter Selection tool is available online at www.eaton.com/hydraulic-filter-evaluation

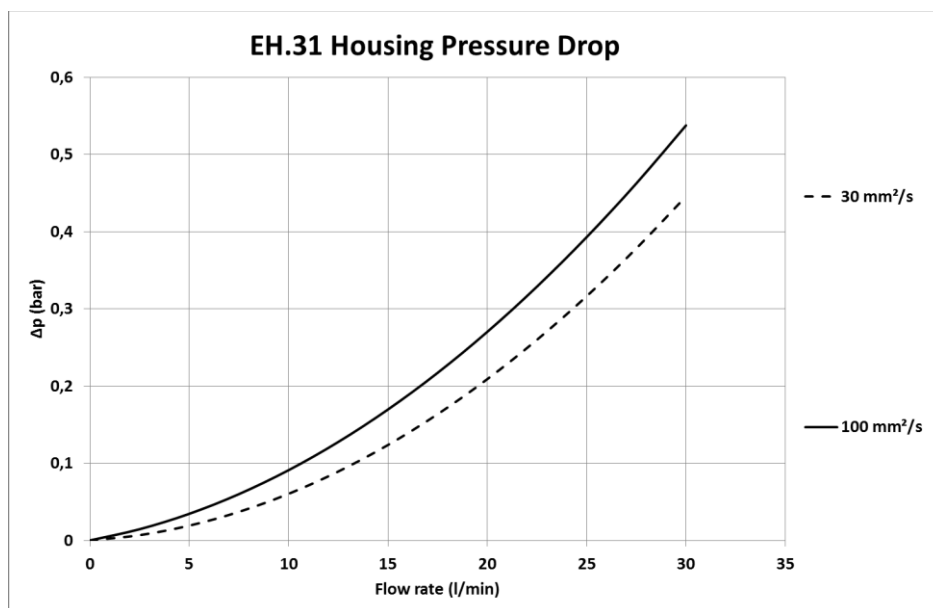
Material gradient coefficients (MSK) for filter elements

The material gradient coefficients in mbar/(l/min) apply to mineral oil (HLP) with a density of 0,876 kg/dm³ and a kinematic viscosity of 30 mm²/s (139 SUS). The pressure drop changes proportionally to the change in kinematic viscosity and density.

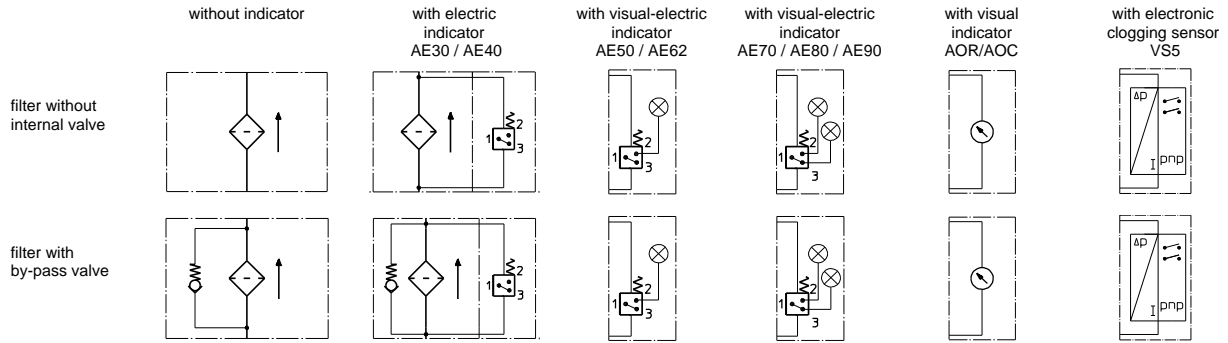
| EH | VG | | | | | G | | |
|----|--------|-------|-------|-------|-------|--------|--------|--------|
| | 3VG | 6VG | 10VG | 16VG | 25VG | 25G | 40G | 80G |
| 31 | 10,116 | 7,023 | 4,496 | 3,915 | 2,674 | 0,2073 | 0,1935 | 0,1325 |

$\Delta p = f(Q)$ – characteristics according to ISO 3968

The pressure drop characteristics apply to mineral oil (HLP) with a density of 0,876 kg/dm³. The pressure drop changes proportionally to the density.



Symbols:



Spare parts:

| item | qty. | designation | dimension | article-no. |
|------|------|----------------|--------------|-----------------------------|
| 1 | 1 | filter element | 01E.30.... | |
| 2 | 1 | O-ring | 42 x 3,5 | 329381 (NBR) 338204 (FPM) |
| 3 | 1 | support ring | 48 x 2,6 x 1 | 305391 |

Test methods:

Filter elements are tested according to the following ISO standards:

| | |
|-----------|---|
| ISO 2941 | Verification of collapse/burst resistance |
| ISO 2942 | Verification of fabrication integrity |
| ISO 2943 | Verification of material compatibility with fluids |
| ISO 3723 | Method for end load test |
| ISO 3724 | Verification of flow fatigue characteristics |
| ISO 3968 | Evaluation of pressure drop versus flow characteristics |
| ISO 16889 | Multi-pass method for evaluating filtration performance |

North America
18684 Lake Drive East
Chanhassen, MN 55317
Toll Free: +1 800-656-3344
(North America only)
Tel: +1 732-212-4700

Greater China
No. 7, Lane 280,
Linhong Road
Changning District, 200335
Shanghai, P.R. China
Tel: +86 21 2899-3687

Europe/Africa/Middle East
Auf der Heide 2
53947 Nettersheim, Germany
Tel: +49 2486 809-0

Asia-Pacific
100G Pasir Panjang Road
#07-08 Interlocal Centre
Singapore 118523
Tel: +65 6825-1620

Friedensstraße 41
68804 Altlußheim, Germany
Tel: +49 6205 2094-0
An den Nahewiesen 24
55450 Langenlonsheim, Germany
Tel: +49 6704 204-0

**For more information, please
email us at filtration@eaton.com
or visit www.eaton.com/filtration**

© 2024 Eaton. All rights reserved. All trademarks and registered trademarks are the property of their respective owners. All information and recommendations appearing in this brochure concerning the use of products described herein are based on tests believed to be reliable. However, it is the user's responsibility to determine the suitability for his own use of such products. Since the actual use by others is beyond our control, no guarantee, expressed or implied, is made by Eaton as to the effects of such use or the results to be obtained. Eaton assumes no liability arising out of the use by others of such products. Nor is the information herein to be construed as absolutely complete, since additional information may be necessary or desirable when particular or exceptional conditions or circumstances exist or because of applicable laws or government regulations.