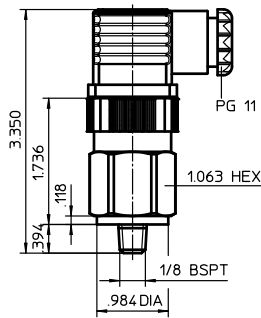


CLOGGING INDICATOR

Series E (electrical), O (visual)

Sheet No.
1616 P



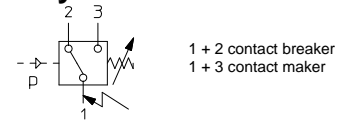
1. Type index: (ordering example)

E2.0,3.P = pressure switch, change over contacts, switching pressure 4.35 PSI
 E2.1,5.P = pressure switch, change over contacts, switching pressure 22 PSI
 E2.2,5.P = pressure switch, change over contacts, switching pressure 36 PSI

2. Technical data:

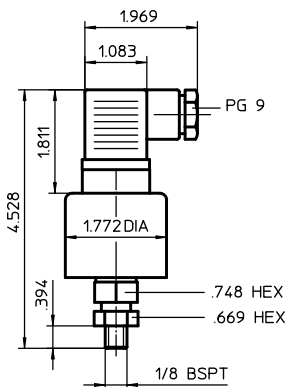
max. pressure to 1450 PSI
 temperature range: -4°F to +176°F
 max. contact load: max. 250 V ≅ /3A
 sealing material: nitrile (NBR)
 protection: IP 65
 plug-in connector: DIN 43650A

3. Symbol:



1 + 2 contact breaker
 1 + 3 contact maker

The functions contact making, contact breaking or contact making and breaking refer to the increasing pressure.



1. Type index: (ordering example)

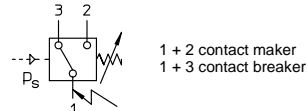
E4.-,0,25.P = pressure switch, change over contacts, switching pressure -3.62 PSI

2. Technical data:

max. pressure to 1160 PSI
 temperature range: -4°F to +176°F
 max. contact load: max. 250 V ≅ /5A
 sealing material: nitrile (NBR)
 protection: IP 65

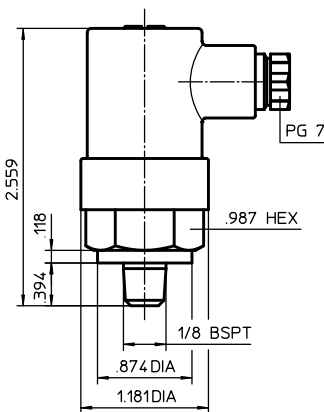
For the electrical connection please use only enclosed utensil socket. Other utensil sockets have a longer fixing screw which can destroy the inside micro switch. The screw of an available utensil socket should have a max. thread reach of 1.10 inch. Do not forget the shaped packing by sticking up the utensil and tighten the fixing screw moderately.

3. Symbol:



1 + 2 contact maker
 1 + 3 contact breaker

The functions contact making, contact breaking or contact making and breaking refer to the increasing pressure (0 PSI → -.01 PSI).



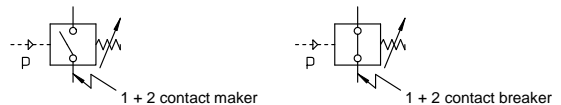
1. Type index: (ordering example)

E1.1,5.P = pressure switch, normally open contacts, switching pressure 22 PSI
 E1.2,5.P = pressure switch, normally open contacts, switching pressure 36 PSI
 E5.1,5.P = pressure switch, normally closed contacts, switching pressure 22 PSI
 E5.2,5.P = pressure switch, normally closed contacts, switching pressure 36 PSI
 E5.5,0.P = pressure switch, normally closed contacts, switching pressure 72 PSI

2. Technical data:

max. pressure to 4350 PSI
 temperature range: -4°F to +212°F
 max. contact load: max. 250 V ≅ /0,5A
 sealing material: nitrile (NBR)
 protection: IP 65

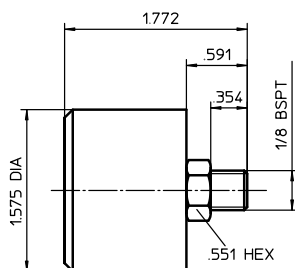
3. Symbol:



1 + 2 contact maker

1 + 2 contact breaker

The function contact making or contact breaking refer to the increasing pressure.



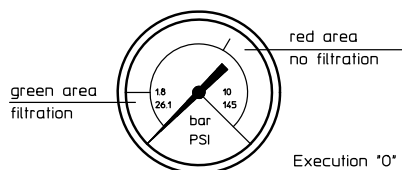
1. Type index: (ordering example)

O = clogging indicator visual, 0 to 145 PSI
 O1 = clogging indicator visual, +8.7 PSI to -14.5 PSI

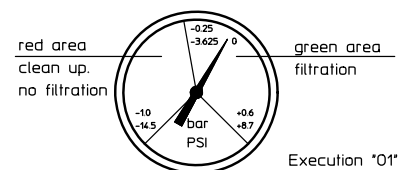
2. Technical data:

temperature range: -4°F to +212°F

3. Symbol:



Execution "0"



Execution "01"

EDV 10/17

Changes of measures and design are subject to alteration!