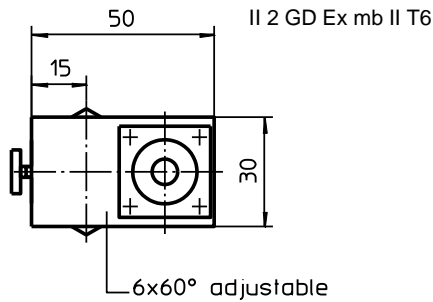
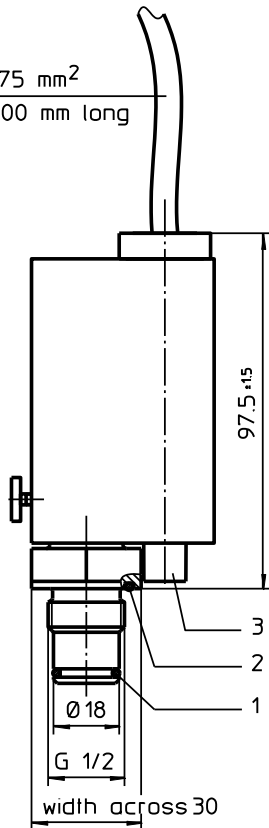


CLOGGING INDICATOR

Series AE (electrical) explosion-proof

Sheet No.
1625 F

cable 2x0.75 mm²
approx. 5000 mm long



1. Type index: (ordering example)

AE. 10. 1,5. P. VA. Ex

1	2	3	4	5	6
---	---	---	---	---	---

- 1 | **series:**
AE = clogging indicator electrical
- 2 | **contact:**
10 = contact maker
- 3 | **indicator-pressure difference: Δp nominal**
1,5 = 1,5 bar; 2,5 = 2,5 bar; 5,0 = 5,0 bar
- 4 | **sealing material:**
P = Nitrile (NBR)
V = Viton (FPM)
- 5 | **material:**
VA = stainless steel
- 6 | **execution:**
Ex = explosion-proof

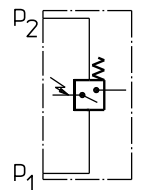
2. Technical data:

permissible fluid temperature:	-40°C to +80°C
permissible ambient temperature:	-40°C to +60°C
max. operating pressure:	420 bar
max. pressure difference:	160 bar

3. Electrical limit facts:

execution:	V DC/V AC 200/250 V, max. 30 Watt contact maker
switch contact:	
protection:	II 2 GD Ex mb II T6 KEMA 00ATEX 1112 X

4. Symbol:



contact maker

5. Spare parts:

item	qty.	designation	dimension	article-no.
1	1	O-ring	14 x 2	304342 (NBR) 304722 (FPM)
2	1	O-ring	22 x 2	304708 (NBR) 304721 (FPM)
3	1	switch explosion-proof		315461

5. Description:

The AE 10 pollution indicator is an electrical differential pressure indicator.

The differential pressure indicator can be fitted to all pressure filters $p \leq 420$ bar for which there is a corresponding assignment on the relevant dimension drawing. As the degree of pollution of the filter element rises, so the difference between the entry pressure p_1 and the exit pressure p_2 of the filter increases. Depending on this pressure difference and irrespective of the operating pressure, an electrical signal on the AE 10 pollution indicator will be released.

A metering piston subjected to the entry and exit pressure moves against a metering spring according to the pressure differential. Depending on the path a permanent magnet integrated in the metering piston activates a reed contact (electromagnetic switch) and triggers the electrical signal. The electrical indication is effected as a digital signal at the given switching pressure.

At the AE 10 pollution indicator the closed condition signalizes that the change of the filter element is necessary.

6. Operating instructions:

Normally filters are supplied with mounted clogging indicator. When retrofitting - the filter is to be discharged of the operating pressure.

- dismantling the screw plug out of the bare hole which is foreseen for the clogging indicator
- screw in the clogging indicator into the bare hole (starting torque 125 Nm).

It is necessary to make sure the availability and the right positioning of sealing parts

- O-ring 22 x 2 and
- O-ring 14 x 2

as well as a dirt-free mounting. The electrical contacts are to be connected according to the graphical symbol shown on the type plate of the clogging indicator.

7. Maintenance:

The device is maintenance-free, however, note that no cleaning fluids and solvents get on the housing and the cable of the switch.