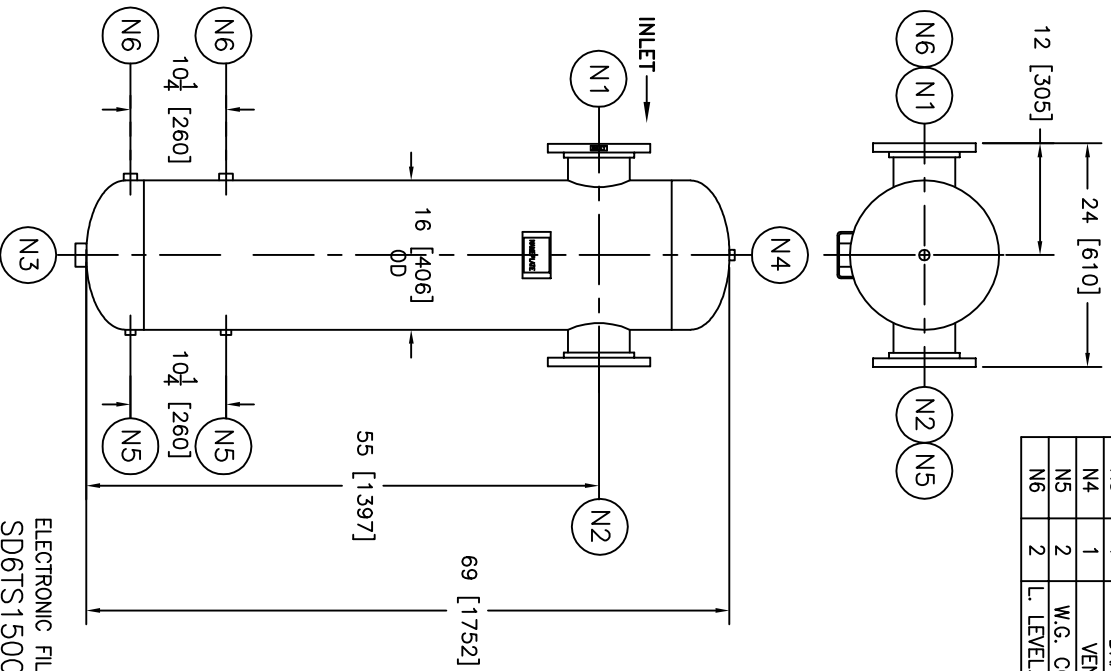


NOZZLE SCHEDULE		
ITEM	QTY.	NAME DESCRIPTION
N1	1	6" - 150# RFSO, B16.5
N2	1	OUTLET 6" - 150# RFSO, B16.5
N3	1	DRAIN 1-1/2" - NPT 3000# COUPLING
N4	1	VENT 1/2" - NPT 3000# COUPLING
N5	2	W.G. CONNS. 1/2" - NPT 3000# COUPLING
N6	2	L. LEVEL. CONN. 1" - NPT 3000# COUPLING



REV	DATE	CHANGE	ECR	BY	APP
A	01/10/07	NEW RELEASE	E401	LH	FJM

NOTES:

- UNITS ARE TO BE DESIGNED, FABRICATED & "U" STAMPED (IF REQUIRED) IN ACCORDANCE WITH ASME B & PV CODE, SECTION VIII, DIVISION 1 IN COMPLIANCE TO CURRENT PUBLISHED ADDENDA.
- ALL DIMENSIONS ARE IN INCHES [MM].
- ALL BOLT HOLES ARE TO STRADDLE NATURAL CENTERLINES.
- SHIPPING WEIGHT: 500 POUNDS.
- DESIGN DATA:
 DESIGN PRESSURE- 150 PSIG
 DESIGN TEMPERATURE- 450°F
 MIN. DESIGN METAL TEMP.- -20°F AT 150 PSIG
 HYDROTEST PRESSURE- 195 PSIG
 CORROSION ALLOWANCE- 0 INCHES
- MATERIAL: CARBON STEEL

CUSTOMER:	-
REG. NO.:	-
P.O. NO.:	-
TAG NO.:	-
PART NO.:	6TS150C/U/M

ELECTRONIC FILE NAME:
SD6TS150C.DWG
TOLERANCES UNLESS OTHERWISE SPECIFIED
PER ENGINEERING STANDARD ES- --

UNAUTHORIZED USE, MANUFACTURE OR
REPRODUCTION IN WHOLE OR IN PART IS
PROHIBITED. DRAWING, DESIGN AND
OTHER DISCLOSURES PROPERTY OF
EATON FILTRATION, LLC

		EATON FILTRATION, LLC 900 FAIRMOUNT AVENUE, ELIZABETH, NEW JERSEY 07207					
		NAME 6" TYPE "TS" GAS/LIQUID SEPARATOR 150# FLG, C. STEEL					
DRAWN	LH	DATE	01/09/07	CHECKED	FM	DATE	01/10/07
APP	FJM	DATE	01/10/07	SCALE	NTS	ECR	E401
SIZE	DWG	NO		SD6TS150C		REV	A