

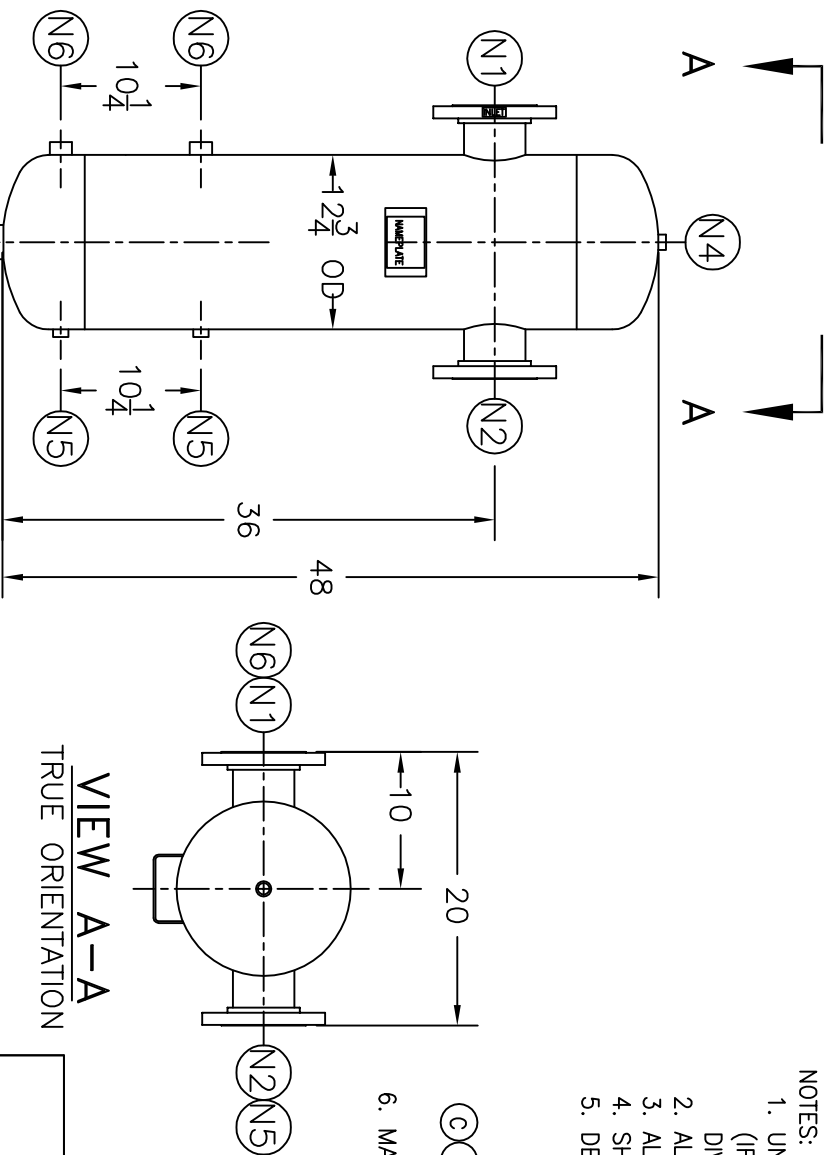
NOZZLE SCHEDULE		ITEM	QTY.	NAME	DESCRIPTION
N1	1	INLET	4" - 150#	RFSO ASME B16.5	
N2	1	OUTLET	4" - 150#	RFSO ASME B16.5	
N3	1	DRAIN	1-1/2" NPT	3000# COUPLING	
N4	1	VENT	1/2" NPT	3000# COUPLING	
N5	2	WATER GAGE	1/2" NPT	3000# COUPLING	
N6	2	LIQUID LEVEL	1" NPT	3000# COUPLING	

REV	DATE	CHANGE	ECR	BY	APP
A	03/30/99	NEW ISSUE	7355	AB	DP
B	10/3/01	REVISED HYDROTEST PRESSURE	9858	GC	VH
C	10/14/05	REVISED HYDROTEST PRESSURE	D500	LH	FM

NOTES:

- UNITS ARE TO BE DESIGNED, FABRICATED, AND CODE STAMPED (IF REQUIRED) IN ACCORDANCE WITH ASME B & PV CODE, SECTION VIII, DIVISION 1 IN COMPLIANCE TO CURRENT PUBLISHED ADDENDA.
- ALL DIMENSIONS ARE IN INCHES.
- ALL BOLT HOLES ARE TO STRADDLE NATURAL CENTERLINES.
- SHIPPING WEIGHT: 175 POUNDS.
- DESIGN DATA:

- DESIGN PRESSURE- 150 PSIG
- DESIGN TEMPERATURE- 300° F
- MIN. DESIGN METAL TEMP.- -20° F @ 150 PSIG
- (C)(B) HYDROTEST PRESSURE- 206 PSIG
- CORROSION ALLOWANCE- 0 INCHES
- 6. MATERIAL: 304L STAINLESS STEEL.



VIEW A-A
TRUE ORIENTATION

ELECTRONIC FILE NAME:
SD4TS155.DWG
TOLERANCES UNLESS OTHERWISE SPECIFIED
PER ENGINEERING STANDARD ES- - -

UNAUTHORIZED USE, MANUFACTURE OR
REPRODUCTION IN WHOLE OR IN PART IS
PROHIBITED. DRAWING, DESIGN AND
OTHER DISCLOSURES PROPERTY OF
EATON FILTRATION, LLC

EATON		EATON FILTRATION, LLC	
900 FAIRMOUNT AVENUE, ELIZABETH, NEW JERSEY 07207		HAYWARD PART NO.: 4TS150S, 4TS150SU & 4TS150SM	
NAME 4" TYPE "TS" GAS/LIQUID SEPARATOR 150# FLG 304L SSTL		CUSTOMER: REG. NO.: P.O. NO.: TAG NO.:	
DRAWN AB	DATE 03/30/99	CHECKED DP	DATE 03/30/99
APP ---	DATE ---	SCALE NTS	ECR 7355
SIZE A	DWG NO	SD4TS150S	
			REV C