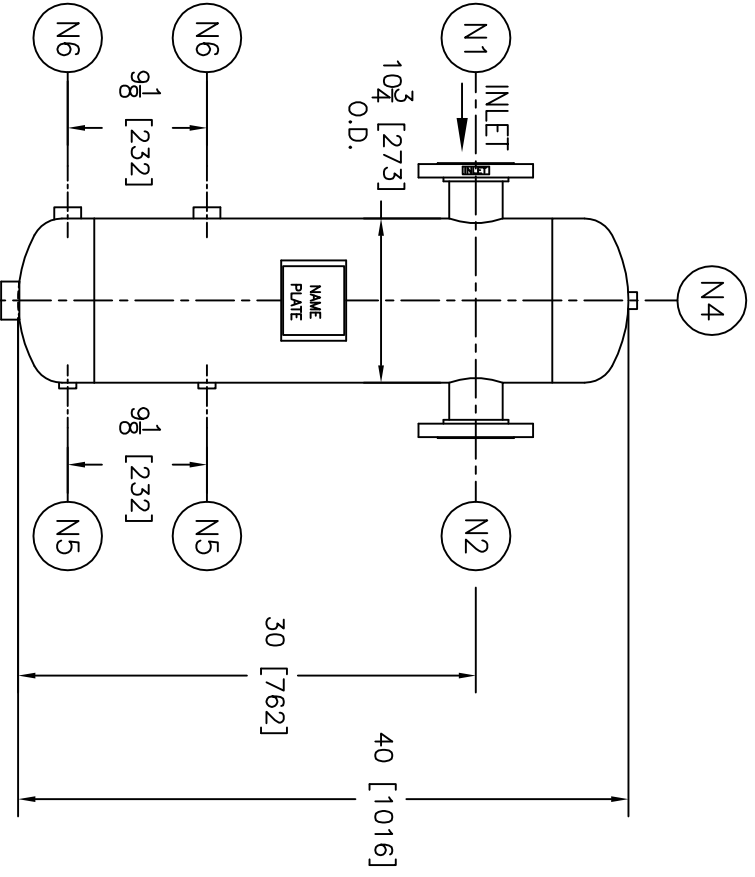
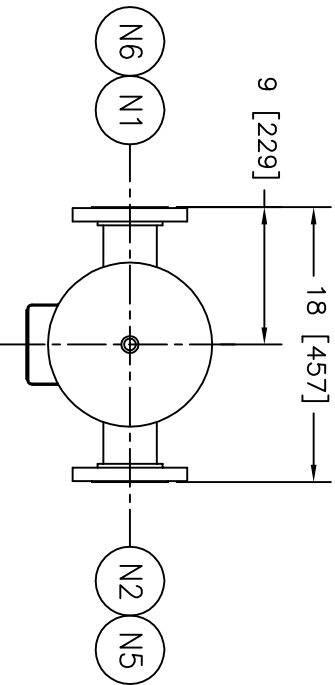


NOZZLE SCHEDULE		REV	DATE	CHANGE	ECR	BY	APP
ITEM	QTY.	NAME	DESCRIPTION				
N1	1	INLET	3"-150# RFSO, ASME B16.5	A 2/28/03		B275	FJM/VA
N2	1	OUTLET	3"-150# RFSO, ASME B16.5	B 11/1/05		D507	FM/LH
N3	1	DRAIN	1 1/2" NPT 3000# HALF COUPLING	C 01/10/07	CHG'D: HTP FR. 225 PSIG	E401	LH/FM
N4	1	VENT	1/2" NPT 3000# HALF COUPLING				
N5	2	W.G. CONN.	1/2" NPT 3000# HALF COUPLING				
N6	2	LIQUID LEVEL	1" NPT 3000# HALF COUPLING				



NOTES:

1. UNITS ARE TO BE DESIGNED, FABRICATED, AND "U" OR "UM" STAMPED (IF REQUIRED) IN ACCORDANCE WITH ASME B & PV CODE, SECTION VIII, DIVISION 1 IN COMPLIANCE TO CURRENT PUBLISHED ADDENDA.
2. ALL DIMENSIONS ARE IN INCHES [MM].
3. ALL BOLT HOLES ARE TO STRADDLE NATURAL CENTERLINES.
4. SHIPPING WEIGHT: 200 POUNDS.
5. DESIGN DATA:
 DESIGN PRESSURE-- 150 PSIG
 DESIGN TEMPERATURE-- 450°F
 MIN. DESIGN METAL TEMP.-- -20°F AT 150 PSIG
 HYDROTEST PRESSURE-- 195 PSIG
 CORROSION ALLOWANCE-- 0 INCHES
6. MATERIAL: CARBON STEEL.



ELECTRONIC FILE NAME:
SD3TS150C.DWG
 TOLERANCES UNLESS OTHERWISE SPECIFIED
 PER ENGINEERING STANDARD ES- --
 UNAUTHORIZED USE, MANUFACTURE OR
 REPRODUCTION IN WHOLE OR IN PART IS
 PROHIBITED. DRAWING, DESIGN AND
 OTHER DISCLOSURES PROPERTY OF
 EATON FILTRATION, LLC

		DRAWN		FJM		DATE		2/28/03		CHECKED		LH		DATE		2/28/03	
		APP		VA		DATE		2/28/03		SCALE		NTS		EGR		B275	
SIZE		B		DWG		NO		SD3TS150C		REV		C					
EATON FILTRATION, LLC 900 FARMDOWN AVENUE, ELIZABETH, NEW JERSEY 07207 3" TYPE "TS" GAS/LIQUID SEPARATOR, 150# FLG, C.ST'L				STANDARD				CUSTOMER: P.O. NO. REGISTER NO.: TAG NO.: PART NUMBER: 3TS150C, 3TS150CM, 3TS150CU									