


NOZZLE SCHEDULE			
ITEM	QTY.	NAME	DESCRIPTION
N1	1	INLET	14"-150# RFSO ASME B16.5
N2	1	OUTLET	14"-150# RFSO ASME B16.5
N3	1	DRAIN	2 1/2" NPT 3000# COUPLING
N4	1	VENT	1/2" NPT 3000# COUPLING

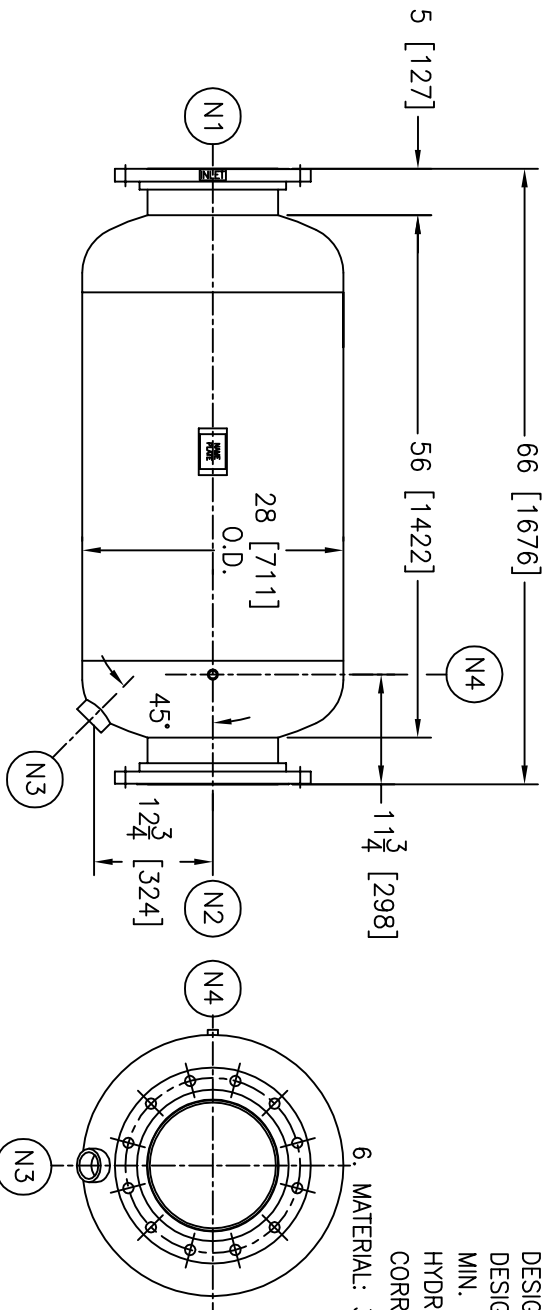
REV	DATE	CHANGE	ECR	BY	APP
A	09/25/07	NEW ISSUE	E835	GO	LH
B	02/18/14	UPDATE HYDROTEST PRESS. TITLE BLOCK	0094842	JJ	FM

NOTES:

1. UNITS ARE TO BE DESIGNED, FABRICATED & "U" STAMPED (IF REQ'D.) IN ACCORDANCE WITH ASME B & PV CODE, SECTION VIII, DIVISION 1 IN COMPLIANCE TO CURRENT PUBLISHED ADDENDA.
2. ALL DIMENSIONS ARE IN INCHES [MM].
3. ALL BOLT HOLES ARE TO STRADDLE NATURAL CENTERLINES.
4. SHIPPING WEIGHT: 1000 POUNDS.
5. DESIGN DATA:

DESIGN PRESSURE- 150 PSIG
 DESIGN TEMPERATURE- 300° F
 MIN. DESIGN METAL TEMP.- -20° F @ 150 PSIG
 HYDROTEST PRESSURE- 207 PSIG 
 CORROSION ALLOWANCE- 0 INCHES

6. MATERIAL: 304/304L S. STEEL.



CUSTOMER:
 REG. NO.:
 P.O. NO.:
 TAG NO.:
 PART NO.: 1431L150S/M/U

EATON FILTRATION, LLC
 44 APPLE ST. TINTON FALLS, NEW JERSEY 07724 U.S.A.
 NAME: 14" TYPE "31-L" GAS/LIQUID SEPARATOR 150#RF SSTL

ELECTRONIC FILE NAME:
 SD1431L150S.DWG
 TOLERANCES UNLESS OTHERWISE SPECIFIED
 PER ENGINEERING STANDARD ES--

UNAUTHORIZED USE, MANUFACTURE OR
 REPRODUCTION IN WHOLE OR IN PART IS
 PROHIBITED. DRAWING, DESIGN AND
 OTHER DISCLOSURES PROPERTY OF
 EATON FILTRATION, LLC

EATON		DATE	09/25/07	CHECKED	FM	DATE	09/26/07
DRAWN	GO	DATE	09/26/07	SCALE	NTS	ECR	E835
APP	LH	DATE	09/26/07	SCALE	NTS	ECR	E835
SIZE	DWG	NO	SD1431L150S	REV	B		