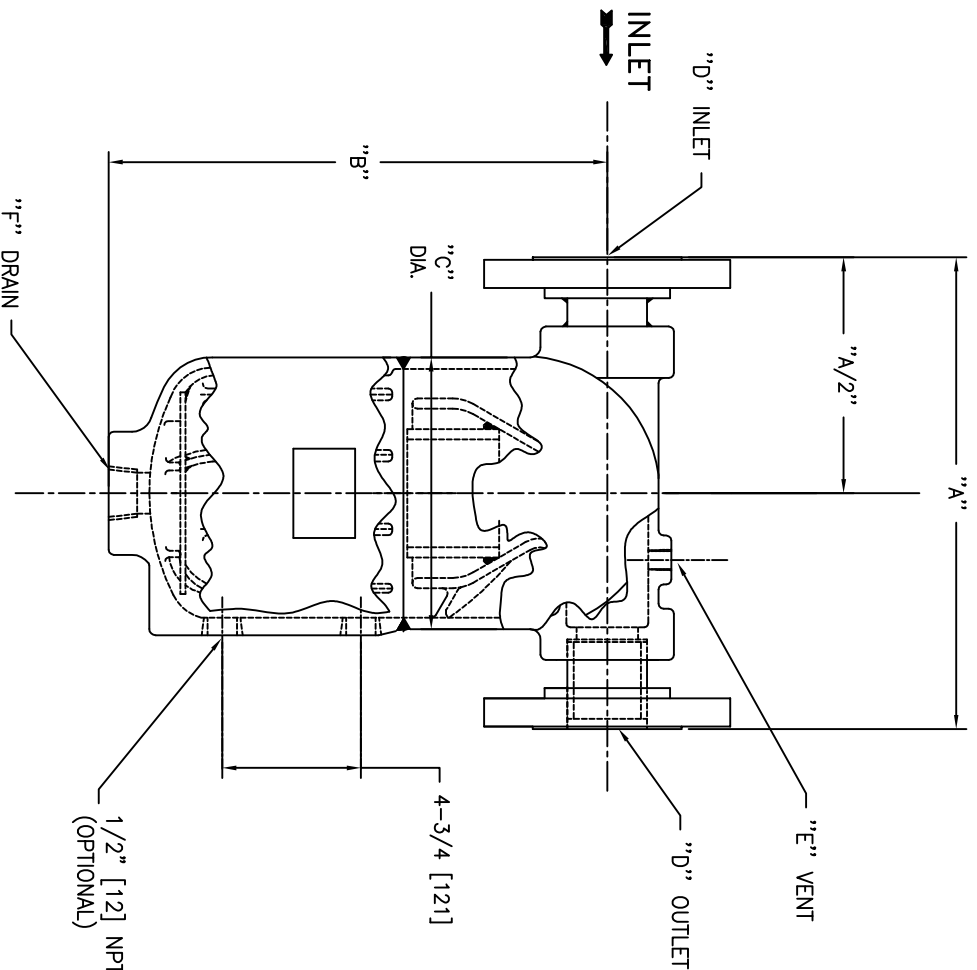


PIPE SIZE (NOMINAL) IN. MM	DIMENSIONS						DRY WEIGHT		PART NO.
	"A" IN. MM	"B" IN. MM	"C" IN. MM	"D" CONNECTION	"E" VENT	"F" DRAIN	LBS	KGS	
1 (25)	10.5 / 267	10.5 / 267	5.56 / 141	1 (25)	1/4" NPT	1" NPT	29	13	1T150C
1-1/4 (32)	10.5 / 267	10.5 / 267	5.56 / 141	1-1/4 (32)	1/4" NPT	1" NPT	30	13.6	1.25T150C
1-1/2 (40)	11.5 / 292	12.5 / 318	6.63 / 168	1-1/2 (40)	1/4" NPT	1" NPT	53	24	1.5T150C
2 (50)	11.5 / 292	12.5 / 318	6.63 / 168	2 (50)	1/4" NPT	1" NPT	57	25.8	2T150C

NOTES:

- UNITS ARE TO BE DESIGNED, FABRICATED & "U" OR "UM" STAMPED (IF REQ'D) IN ACCORDANCE WITH ASME B & PV CODE, SECTION VIII, DIVISION 1, IN COMPLIANCE TO CURRENT PUBLISHED ADDENDA.
- ALL DIMENSIONS ARE IN INCHES [MM].
- ALL BOLT HOLES ARE TO STRADDLE NATURAL CENTERLINES.
- DESIGN DATA:  
 DESIGN PRESSURE- 150 PSIG [10.3 BARG]  
 DESIGN TEMPERATURE- 450° F [232°C]  
 MIN. DESIGN METAL TEMP.- -20° F @ 150 PSIG [-29° C @ 10.3 BARG]  
 HYDROTEST PRESSURE- 195 PSIG [13.39 BARG]  
 CORROSION ALLOWANCE- 0 INCHES  
 5. MATERIAL: CARBON STEEL (CASTING DESIGN)



1/2" [12] NPT W.G. (2) PLACES (OPTIONAL)

4-3/4 [121]

ELECTRONIC FILE NAME: SDT150CC.DWG  
 REF. ECR D507 DATE 11/1/05

UNAUTHORIZED USE, MANUFACTURE OR REPRODUCTION IN WHOLE OR IN PART IS PROHIBITED. DRAWING, DESIGN AND OTHER DISCLOSURES PROPERTY OF EATON FILTRATION, LLC

		<b>EATON FILTRATION, LLC</b> 900 FAIRMOUNT AVENUE, ELIZABETH, NEW JERSEY 07207		
		TYPE "1" GAS/ LIQUID 150# FLANGED CONNECTIONS CAST CARBON STEEL		
DRAWN SIZE A	LH	DATE 05/24/04	CERT. FM	DATE 05/24/04
DWG NO.		SDT150CC		
REV B				

CERTIFIED FOR -  
 REG. NO.: -  
 P.O. NO.: -  
 QUOTE NO.: -  
 TAG NO.: -