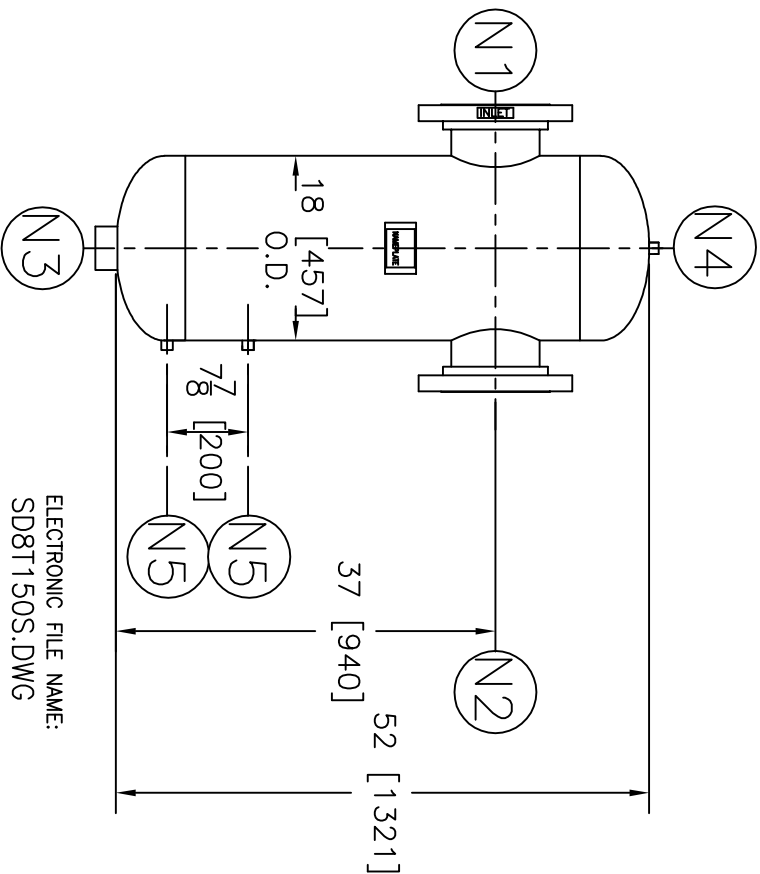
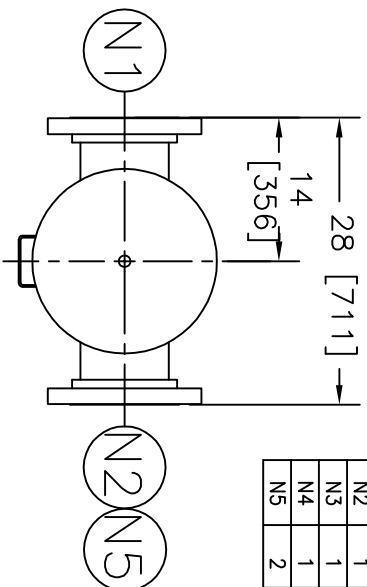


NOZZLE SCHEDULE		
ITEM	QTY.	NAME DESCRIPTION
N1	1	INLET 8" - 150# RFSO ASME B16.5
N2	1	OUTLET 8" - 150# RFSO ASME B16.5
N3	1	DRAIN 2" NPT 3000# COUPLING
N4	1	VENT 1/2" NPT 3000# COUPLING
N5	2	W.G. CONNECTIONS 1/2" NPT 3000# COUPLING



REV	DATE	CHANGE	ECR	BY	APP
A	05/09/07	NEW RELEASE	E615	LH	FJM

NOTES:

1. UNITS ARE TO BE DESIGNED, FABRICATED, AND "U" STAMPED (IF REQUIRED) IN ACCORDANCE WITH ASME B & PV CODE, SECTION VIII, DIVISION 1 IN COMPLIANCE TO CURRENT PUBLISHED ADDENDA.
2. ALL DIMENSIONS ARE IN INCHES [MM].
3. ALL BOLT HOLES ARE TO STRADDLE NATURAL CENTERLINES.
4. SHIPPING WEIGHT: 425 POUNDS.
5. DESIGN DATA:

DESIGN PRESSURE- 150 PSIG
 DESIGN TEMPERATURE- 300° F
 MIN. DESIGN METAL TEMP.- -20° F @ 150 PSIG
 HYDROTEST PRESSURE- 206 PSIG
 CORROSION ALLOWANCE- 0 INCHES
 6. MATERIAL: 304/304L STAINLESS STEEL

CUSTOMER:	-
REG. NO.:	-
P.O. NO.:	-
TAG NO.:	-
PART NO.:	8T150S/U

ELECTRONIC FILE NAME:
SD8T150S.DWG

TOLERANCES UNLESS OTHERWISE SPECIFIED
PER ENGINEERING STANDARD ES--

UNAUTHORIZED USE, MANUFACTURE OR
REPRODUCTION IN WHOLE OR IN PART IS
PROHIBITED. DRAWING, DESIGN AND
OTHER DISCLOSURES PROPERTY OF
EATON FILTRATION, LLC



EATON FILTRATION, LLC
 900 FAIRMOUNT AVENUE, ELIZABETH, NEW JERSEY 07207
 NAME 8" TYPE "T" GAS/ LIQUID
 SEPARATOR, 150# FLG, S. STEEL

DRAWN	LH	DATE	05/08/07	CHECKED	FM	DATE	05/09/07
APP	FJM	DATE	05/09/07	SCALE	1/20	ECR	E615
SIZE	DWG	SD8T150S		REV	A		