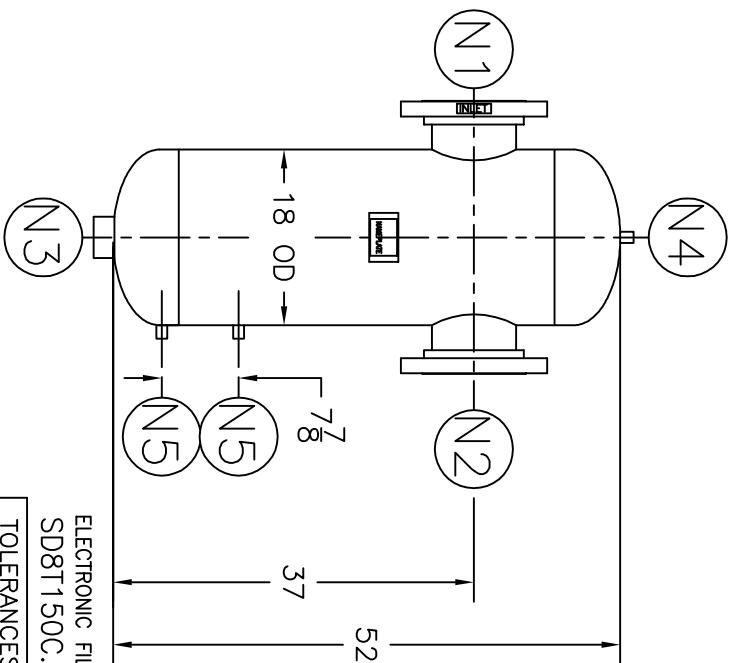
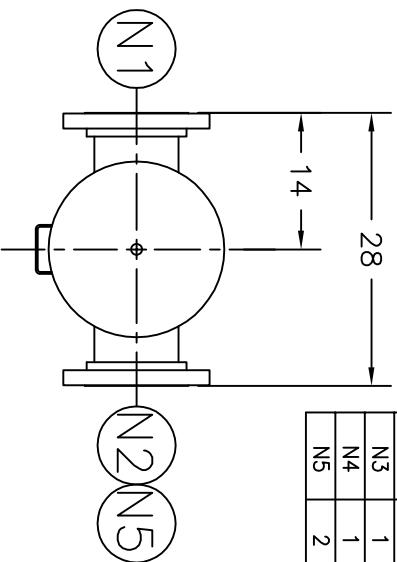



NOZZLE SCHEDULE		REV	DATE	CHANGE	ECR	BY	APP
ITEM	QTY.	NAME	DESCRIPTION				
N1	1	INLET	8" - 150# RESO ASME B16.5	A	5/21/02	NEW ISSUE	A550 GC DE
N2	1	OUTLET	8" - 150# RESO ASME B16.5	B	11/1/05	REVISED TITLE BLOCK	D507 FM LH
N3	1	DRAIN	2" NPT 3000# COUPLING	C	8/1/11	MIN.DESIGN METAL TEMP WAS -20 F@ 500 PSIG	0059679 JY LH
N4	1	VENT	1/2" NPT 3000# COUPLING				
N5	2	W.G. CONNECTIONS	1/2" NPT 3000# COUPLING				



NOTES:

1. UNITS ARE TO BE DESIGNED, FABRICATED, AND CODE STAMPED (IF REQUIRED) IN ACCORDANCE WITH ASME B & PV CODE, SECTION VIII, DIVISION 1 IN COMPLIANCE TO CURRENT PUBLISHED ADDENDA.
2. ALL DIMENSIONS ARE IN INCHES.
3. ALL BOLT HOLES ARE TO STRADDLE NATURAL CENTERLINES.
4. SHIPPING WEIGHT: 525 POUNDS.
5. DESIGN DATA:
 DESIGN PRESSURE- 150 PSIG
 DESIGN TEMPERATURE- 450° F
 MIN. DESIGN METAL TEMP.- -20° F @ 150 PSIG 
 HYDROTEST PRESSURE- 195 PSIG
 CORROSION ALLOWANCE- 0 INCHES
6. MATERIAL: CARBON STEEL.

CUSTOMER:
 REG. NO.:
 P.O. NO.:
 TAG NO.:
 PART NO.: 8T150C/U/M

EATON
 70 WOOD AVENUE SOUTH, ISELIN, NEW JERSEY 08830
EATON FILTRATION, LLC
 NAME: 8" TYPE "T" GAS/LIQUID SEPARATOR 150# FLG CSTL

ELECTRONIC FILE NAME:
 SD8T150C.DWG
 TOLERANCES UNLESS OTHERWISE SPECIFIED
 PER ENGINEERING STANDARD ES- --
 UNAUTHORIZED USE, MANUFACTURE OR
 REPRODUCTION IN WHOLE OR IN PART IS
 PROHIBITED. DRAWING, DESIGN AND
 OTHER DISCLOSURES PROPERTY OF
 EATON FILTRATION, LLC

DRAWN	GC	DATE	5/21/02	CHECKED	VA	DATE	5/21/02
APP	FJM	DATE	5/21/02	SCALE	NTS	ECR	--
SIZE	DWG	SD8T150C					
A	No	REV C					