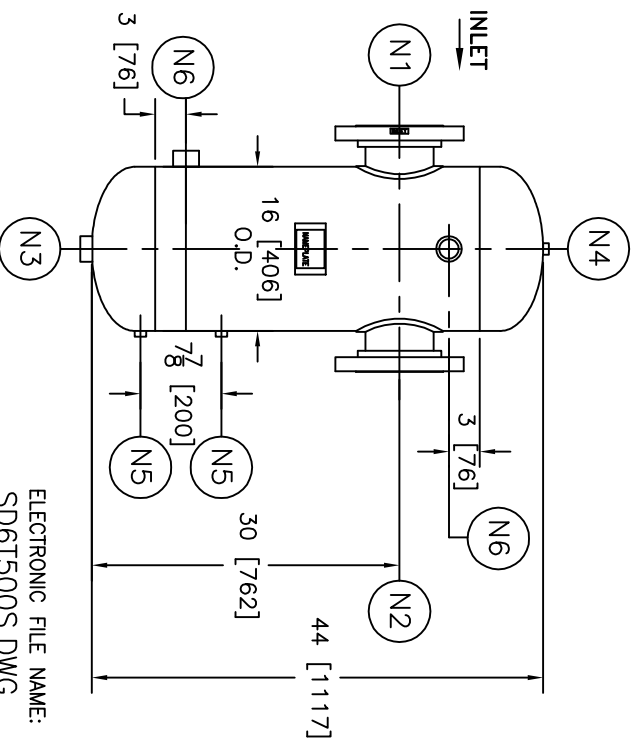
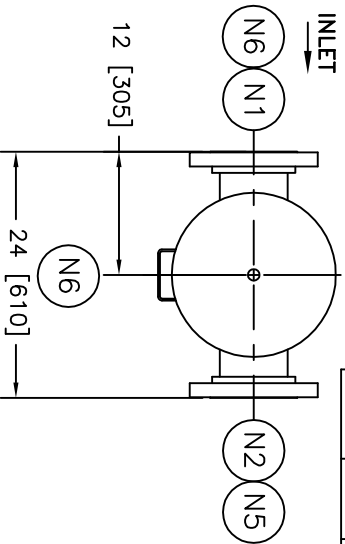


NOZZLE SCHEDULE		
ITEM	QTY.	NAME DESCRIPTION
N1	1	INLET 6" - 300# RFSQ, B16.5
N2	1	OUTLET 6" - 300# RFSQ, B16.5
N3	1	DRAIN 1-1/2" - NPT 3000# COUPLING
N4	1	VENT 1/2" - NPT 3000# COUPLING
N5	2	W.G. CONNS. 1/2" - NPT 3000# COUPLING
N6	2	INSPECTION 1-1/2" - NPT 3000# COUPLING

INLET



NOTES:

1. UNITS ARE TO BE DESIGNED, FABRICATED & "U" STAMPED (AS REQUIRED) IN ACCORDANCE WITH ASME B & PV CODE, SECTION VIII, DIVISION 1 IN COMPLIANCE TO CURRENT PUBLISHED ADDENDA.
2. ALL DIMENSIONS ARE IN INCHES [MM].
3. ALL BOLT HOLES ARE TO STRADDLE NATURAL CENTERLINES.
4. SHIPPING WEIGHT: 380 POUNDS.
5. DESIGN DATA:
 DESIGN PRESSURE- 500 PSIG
 DESIGN TEMPERATURE- 300°F
 MIN. DESIGN METAL TEMP.- -20°F AT 500 PSIG
 HYDROTEST PRESSURE- 650 PSIG
 CORROSION ALLOWANCE- 0 INCHES
6. MATERIAL: 304/304L SSTL.

REV	DATE	CHANGE	ECR	BY	APP
A	08/26/05	NEW RELEASE	D380	GO	VA
B	11/1/05	REVISED TITLE BLOCK	D507	FM	LH

ELECTRONIC FILE NAME:
SD6T500S.DWG
TOLERANCES UNLESS OTHERWISE SPECIFIED
PER ENGINEERING STANDARD ES--

UNAUTHORIZED USE, MANUFACTURE OR
REPRODUCTION IN WHOLE OR IN PART IS
PROHIBITED. DRAWING, DESIGN AND
OTHER DISCLOSURES PROPERTY OF
EATON FILTRATION, LLC

		EATON FILTRATION, LLC 900 FAIRMOUNT AVENUE, ELIZABETH, NEW JERSEY 07207							
		NAME 6" TYPE "T" GAS/ LIQUID SEPARATOR, 300# FLG, S. STL.							
DRAWN	GO	DATE	08/26/05	CHECKED	FM	DATE	08/26/05		
APP	VA	DATE	08/26/05	SCALE	NTS	ECR	D380		
SIZE	A	DWG	NO	SD6T500S				REV	B

CUSTOMER:
REG. NO.:
P.O. NO.:
TAG NO.:
PART NO.: 6T500S/U/M