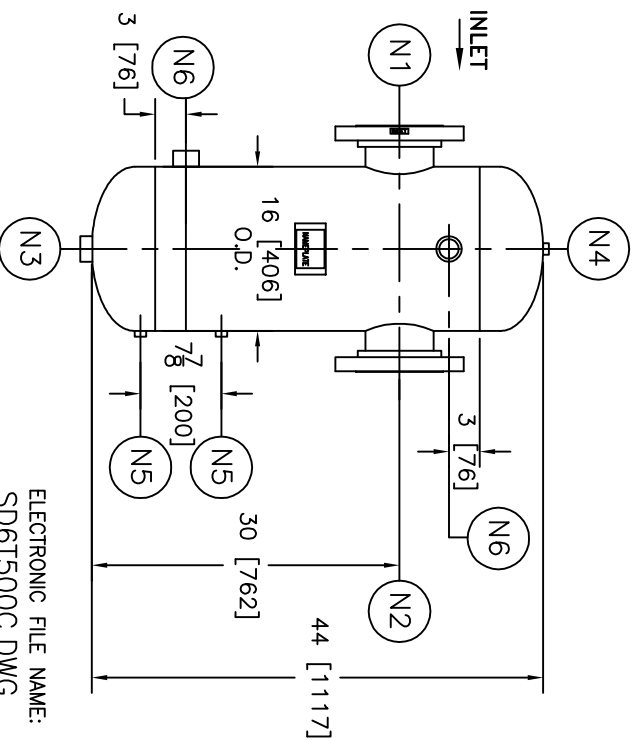
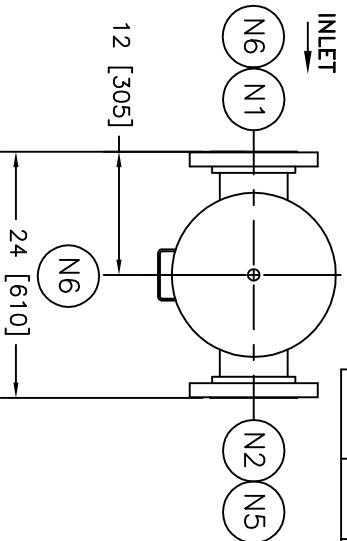


NOZZLE SCHEDULE			
ITEM	QTY.	NAME	DESCRIPTION
N1	1	INLET	6" - 300# RFSQ, B16.5 W/ XH. PIPE
N2	1	OUTLET	6" - 300# RFSQ, B16.5 W/ XH. PIPE
N3	1	DRAIN	1-1/2" - NPT 3000# COUPLING
N4	1	VENT	1/2" - NPT 3000# COUPLING
N5	2	W.G. CONNS.	1/2" - NPT 3000# COUPLING
N6	2	INSPECTION	1-1/2" - NPT 3000# COUPLING

INLET



REV	DATE	CHANGE	ECR	BY	APP
A	09/17/04	NEW RELEASE	C604	LH	VA
B	05/23/05	ADDED PART. NO. 6T500CM	D173	LH	ANB
C	11/1/05	REVISED TITLE BLOCK	D507	FM	LH

NOTES:

1. UNITS ARE TO BE DESIGNED, FABRICATED, & "U" STAMPED (AS REQUIRED) IN ACCORDANCE WITH ASME B & PV CODE, SECTION VIII, DIVISION 1 IN COMPLIANCE TO CURRENT PUBLISHED ADDENDA.
2. ALL DIMENSIONS ARE IN INCHES [MM].
3. ALL BOLT HOLES ARE TO STRADDLE NATURAL CENTERLINES.
4. SHIPPING WEIGHT: 380 POUNDS.
5. DESIGN DATA:
 DESIGN PRESSURE- 500 PSIG
 DESIGN TEMPERATURE- 650°F
 MIN. DESIGN METAL TEMP.- -20°F AT 500 PSIG
 HYDROTEST PRESSURE- 650 PSIG
 CORROSION ALLOWANCE- 0 INCHES
6. MATERIAL: CARBON STEEL.

ELECTRONIC FILE NAME:
SD6T500C.DWG
TOLERANCES UNLESS OTHERWISE SPECIFIED
PER ENGINEERING STANDARD ES--

UNAUTHORIZED USE, MANUFACTURE OR
REPRODUCTION IN WHOLE OR IN PART IS
PROHIBITED. DRAWING, DESIGN AND
OTHER DISCLOSURES PROPERTY OF
EATON FILTRATION, LLC

		EATON FILTRATION, LLC 900 FAIRMOUNT AVENUE, ELIZABETH, NEW JERSEY 07207					
		NAME 6" TYPE "T" GAS/ LIQUID SEPARATOR, 300# FLG, C. STEEL					
DRAWN	LH	DATE	09/17/04	CHECKED	FM	DATE	09/17/04
APP	VA	DATE	09/17/04	SCALE	NTS	ECR	C604
SIZE	A	DWG	NO	SD6T500C		REV	C