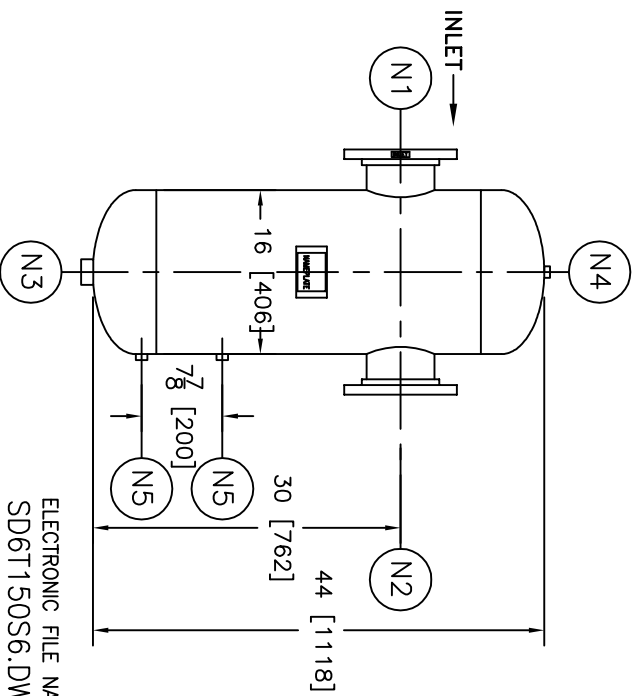
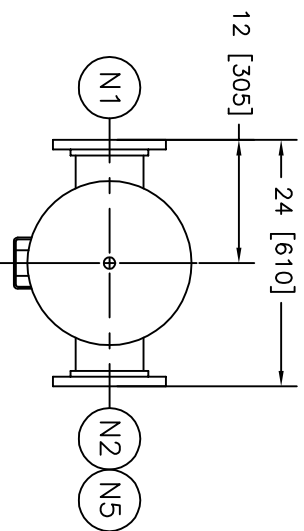


NOZZLE SCHEDULE			
ITEM	QTY.	NAME	DESCRIPTION
N1	1	INLET	6" - 150# RFSQ, B16.5
N2	1	OUTLET	6" - 150# RFSQ, B16.5
N3	1	DRAIN	1-1/2" - NPT 3000# COUPLING
N4	1	VENT	1/2" - NPT 3000# COUPLING
N5	2	W.G. CONNS.	1/2" - NPT 3000# COUPLING

REV	DATE	CHANGE	ECR	BY	APP
A	10/21/03	NEW RELEASE	B806	LH	VA
B	11/1/05	REVISED TITLE BLOCK	D507	FM	LH




NOTES:

1. UNITS ARE TO BE DESIGNED, FABRICATED, & CODE STAMPED (IF REQ'D) IN ACCORDANCE WITH ASME B & PV CODE, SECTION VIII, DIVISION 1 IN COMPLIANCE TO CURRENT PUBLISHED ADDENDA.
2. ALL DIMENSIONS ARE IN INCHES [MM].
3. ALL BOLT HOLES ARE TO STRADDLE NATURAL CENTERLINES.
4. SHIPPING WEIGHT: 180 POUNDS.
5. DESIGN DATA:
 DESIGN PRESSURE- 150 PSIG
 DESIGN TEMPERATURE- 300°F
 MIN. DESIGN METAL TEMP.- -20°F AT 150 PSIG
 HYDROTEST PRESSURE- 195 PSIG
 CORROSION ALLOWANCE- 0 INCHES
 6. MATERIAL: 316/316L STAINLESS STEEL.

ELECTRONIC FILE NAME:
SD6T150S6.DWG

TOLERANCES UNLESS OTHERWISE SPECIFIED
PER ENGINEERING STANDARD ES- - -

UNAUTHORIZED USE, MANUFACTURE OR
REPRODUCTION IN WHOLE OR IN PART IS
PROHIBITED. DRAWING, DESIGN AND
OTHER DISCLOSURES PROPERTY OF
EATON FILTRATION, LLC

		EATON FILTRATION, LLC 900 FAIRMOUNT AVENUE, ELIZABETH, NEW JERSEY 07207						
		NAME 6" TYPE "T" GAS/LIQUID SEPARATOR 150# FLG 316L						
DRAWN	LH	DATE	10/21/03	CHECKED	FM	DATE	10/21/03	
APP	VA	DATE	10/21/03	SCALE	NTS	ECR	B806	
SIZE	DWG	NO		SD6T150S6				REV
A								B

CUSTOMER:
REG. NO.:
P.O. NO.:
TAG NO.:
PART NO.: 6T150S6, 6T150S6U & 6T150S6M