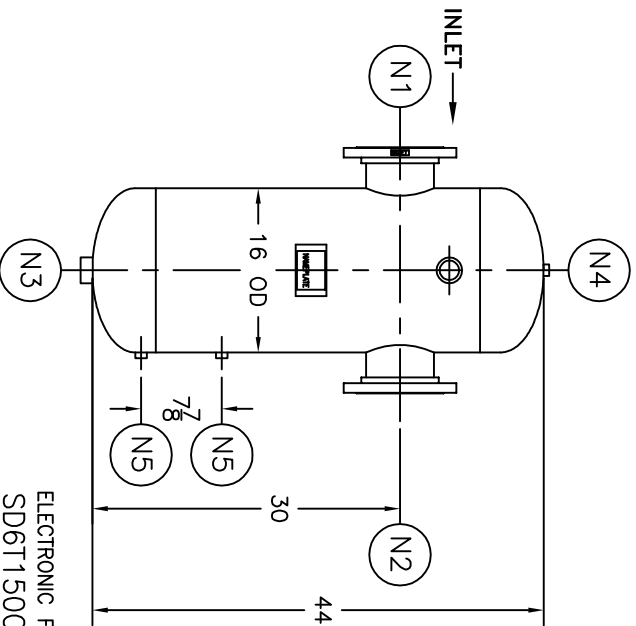
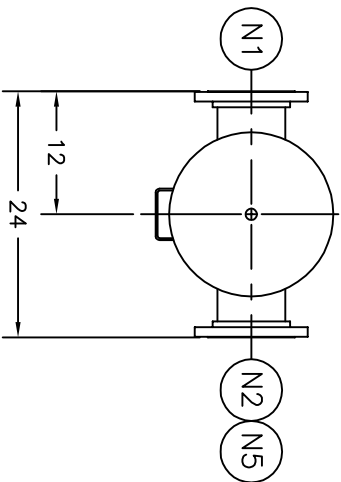


NOZZLE SCHEDULE		REV	DATE	CHANGE	ECR	BY	APP
ITEM	QTY.	NAME	DESCRIPTION				
N1	1	INLET	6" - 150# RFSQ, B16.5 W/ STD WT PIPE	A	6/29/00		
N2	1	OUTLET	6" - 150# RFSQ, B16.5 W/ STD WT PIPE	B	05/10/05	NEW RELEASE	8561 FG FJM
N3	1	DRAIN	1-1/2" - NPT 3000# COUPLING			CHG'D. P/N : TO 6T150C/U/M	D152 LH FM
N4	1	VENT	1/2" - NPT 3000# COUPLING	C	11/1/05	REVISED TITLE BLOCK	D507 FM LH
N5	2	W.G. CONNS.	1/2" - NPT 3000# COUPLING				



NOTES:

1. UNITS ARE TO BE DESIGNED, FABRICATED, "U" OR "UM" STAMPED (AS REQUIRED) IN ACCORDANCE WITH ASME B & PV CODE, SECTION VIII, DIVISION 1 IN COMPLIANCE TO CURRENT PUBLISHED ADDENDA.
2. ALL DIMENSIONS ARE IN INCHES.
3. ALL BOLT HOLES ARE TO STRADDLE NATURAL CENTERLINES.
4. SHIPPING WEIGHT: 375 POUNDS.
5. DESIGN DATA:
 DESIGN PRESSURE- 150 PSIG
 DESIGN TEMPERATURE- 450°F
 MIN. DESIGN METAL TEMP.- -20°F AT 150 PSIG
 HYDROTEST PRESSURE- 195 PSIG
 CORROSION ALLOWANCE- 0 INCHES
6. MATERIAL: CARBON STEEL.

ELECTRONIC FILE NAME:
SD6T150C.DWG

TOLERANCES UNLESS OTHERWISE SPECIFIED
PER ENGINEERING STANDARD ES- - -

UNAUTHORIZED USE, MANUFACTURE OR
REPRODUCTION IN WHOLE OR IN PART IS
PROHIBITED. DRAWING, DESIGN AND
OTHER DISCLOSURES PROPERTY OF
EATON FILTRATION, LLC

		EATON FILTRATION, LLC 900 FAIRMOUNT AVENUE, ELIZABETH, NEW JERSEY 07207					
		NAME 6" TYPE "T" GAS/LIQUID SEPARATOR 150# FLG CSTL					
DRAWN	FG	DATE	6/29/00	CHECKED	FG	DATE	6/29/00
App	--	DATE	--	SCALE	NTS	ECR	8561
SIZE	DWG	SD6T150C		REV	C		

CUSTOMER:
REG. NO.:
P.O. NO.:
TAG NO.:
PART NO.: 6T150C/U/M