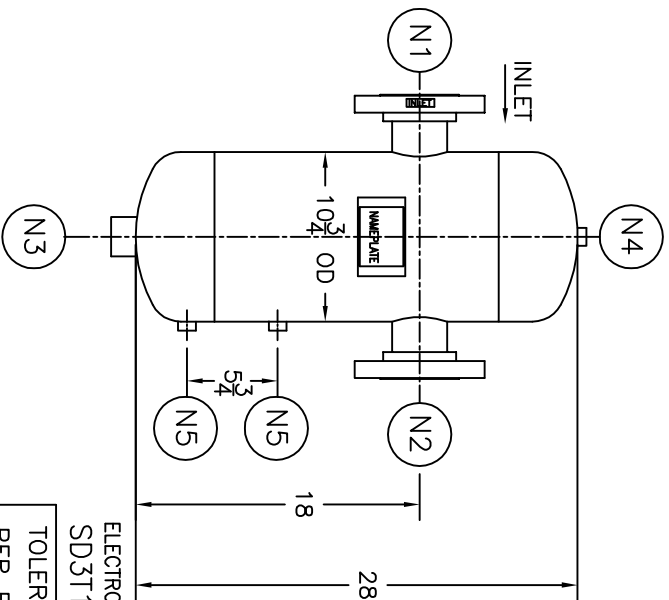
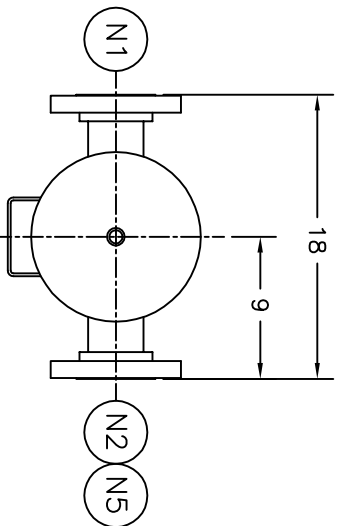


NOZZLE SCHEDULE		
ITEM	QTY.	DESCRIPTION
N1	1	3" 150# RFSO ASME B16.5 INLET
N2	1	3" 150# RFSO ASME B16.5 OUTLET
N3	1	1-1/2" 3000# NPT COUPLING DRAIN
N4	1	1/2" NPT 3000# COUPLING VENT
N5	2	1/2" NPT 3000# COUPLING LIQUID LEVEL



ELECTRONIC FILE NAME:
SD3T150S.DWG

TOLERANCES UNLESS OTHERWISE SPECIFIED
PER ENGINEERING STANDARD ES- - -

UNAUTHORIZED USE, MANUFACTURE OR
REPRODUCTION IN WHOLE OR IN PART IS
PROHIBITED. DRAWING, DESIGN AND
OTHER DISCLOSURES PROPERTY OF
EATON FILTRATION, LLC

REV	DATE	CHANGE	ECR	BY	APP
A	7/12/01	NEW ISSUE	9612	GC	FJM
B	11/1/05	REVISED TITLE BLOCK	D507	FM	LH

NOTES:

1. UNITS ARE TO BE DESIGNED, FABRICATED & "U" OR "UM" STAMPED IN ACCORDANCE WITH ASME BOILER & PRESSURE VESSEL CODE, SECTION VIII, DIVISION 1 IN COMPLIANCE TO CURRENT PUBLISHED ADDENDA.
2. ALL DIMENSIONS ARE IN INCHES.
3. ALL BOLT HOLES ARE TO STRADDLE NATURAL CENTERLINES.
4. SHIPPING WEIGHT: 100 POUNDS.
5. DESIGN DATA:
DESIGN PRESSURE- 150 PSIG
DESIGN TEMPERATURE- 300° F
MIN. DESIGN METAL TEMP.- -20° F @ 150 PSIG
HYDROTEST PRESSURE- 195 PSIG
CORROSION ALLOWANCE- 0 INCHES
6. MATERIAL: 304/304L STAINLESS STEEL

STANDARD

CUSTOMER:
REG. NO.:
P.O. NO.:
TAG NO.:
PART NO.: 3T150S, 3T150SU, & 3T150SM

EATON	EATON FILTRATION, LLC					
	900 FAIRMOUNT AVENUE, ELIZABETH, NEW JERSEY 07207					
NAME 3" TYPE "T" GAS/LIQUID SEP.		DATE 7/12/01			CHECKED FJM	DATE 7/12/01
150# RF FLG. SSTL		DATE 7/12/01		SCALE NTS	ECR 9612	

DRAWN	GC	DATE	7/12/01	CHECKED	FJM	DATE	7/12/01
APP	VH	DATE	7/12/01	SCALE	NTS	ECR	9612
SIZE	DWG	SD3T150S		REV	B		