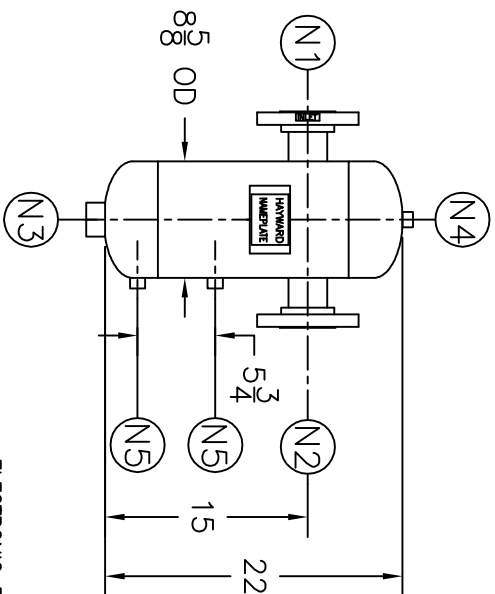
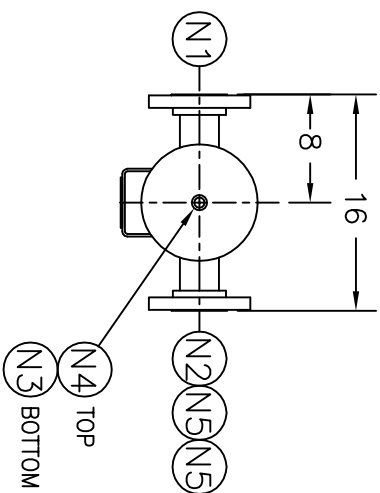


NOZZLE SCHEDULE		
ITEM	QTY.	NAME DESCRIPTION
N1	1	2 1/2" - 300# RFSO ASME B16.5 INLET
N2	1	2 1/2" - 300# RFSO ASME B16.5 OUTLET
N3	1	1" NPT 3000# COUPLING DRAIN
N4	1	1/2" NPT 3000# COUPLING VENT
N5	2	1/2" NPT 3000# COUPLING W.G. CONNECTIONS

REV	DATE	CHANGE	ECR	BY	APP
A	09/27/00	NEW ISSUE	8913	FG	FJM
B	10/14/13	UPDATE TITLE BLOCK	0090561	JJ	FM



NOTES:

- UNITS ARE TO BE DESIGNED, FABRICATED, & "U" OR "UM" STAMPED (IF REQUIRED) IN ACCORDANCE WITH ASME B & PV CODE, SECTION VIII, DIVISION 1 IN COMPLIANCE TO CURRENT PUBLISHED ADDENDA.
- ALL DIMENSIONS ARE IN INCHES.
- ALL BOLT HOLES ARE TO STRADDLE NATURAL CENTERLINES.
- SHIPPING WEIGHT: 95 POUNDS.
- DESIGN DATA:  
 DESIGN PRESSURE- 500 PSIG  
 DESIGN TEMPERATURE- 300° F  
 MIN. DESIGN METAL TEMP.- -20° F @ 500 PSIG  
 HYDROTEST PRESSURE- 650 PSIG  
 CORROSION ALLOWANCE- 0 INCHES
- MATERIAL: 304/304L STAINLESS STEEL.
- COMMERCIAL BLAST CLEANING PER SSPC-SP 6.

ELECTRONIC FILE NAME:  
SD2.5T500S.DWG  
TOLERANCES UNLESS OTHERWISE SPECIFIED  
PER ENGINEERING STANDARD ES- --  
UNAUTHORIZED USE, MANUFACTURE OR  
REPRODUCTION IN WHOLE OR IN PART IS  
PROHIBITED. DRAWING, DESIGN AND  
OTHER DISCLOSURES PROPERTY OF  
EATON FILTRATION, LLC

		<b>EATON FILTRATION, LLC</b> 44 APPLE ST. TINTON FALLS, NEW JERSEY 07724 U.S.A.					
		NAME <b>2.5" TYPE "T" GAS/LIQUID          SEPARATOR 300# FLG 304/304L</b>					
DRAWN	FJM	DATE	01/29/01	CHECKED	LH	DATE	01/29/01
APP	FG	DATE	01/29/01	SCALE	NTS	ECR	9182
SIZE	DWG	<b>SD2.5T500S</b>		REV	<b>B</b>		

CUSTOMER:  
 REG. NO.:  
 P.O. NO.:  
 TAG NO.:  
 PART NO.: 2.5T500S  
 2.5T500SM  
 2.5T500SU