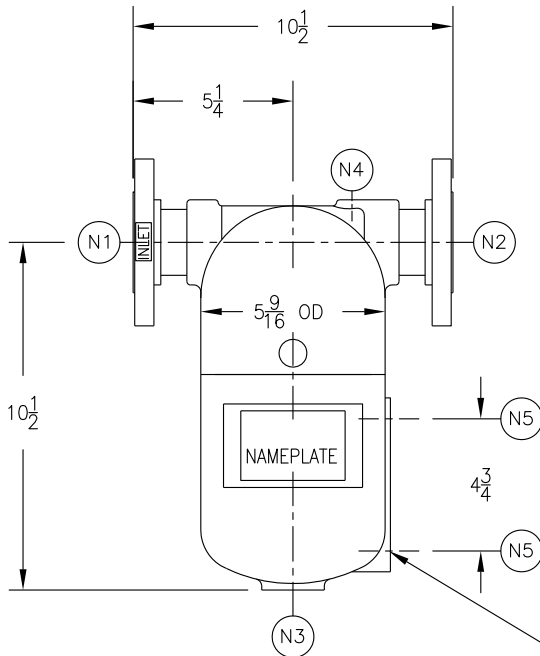


NOZZLE SCHEDULE			
ITEM	QTY.	NAME	DESCRIPTION
N1	1	INLET	1" 300# RFSO ASME B16.5
N2	1	OUTLET	1" 300# RFSO ASME B16.5
N3	1	DRAIN	1" NPT
N4	1	VENT	1/4" NPT
N5	2	WATER GAGE	1/2" NPT

REV	DATE	CHANGE	ECR	BY	APP
A	11/1/05	NEW RELEASE	D507	FM	FJM



(ONLY WHEN SPECIFIED ON PURCHASE ORDER)

ELECTRONIC FILE NAME:  
SD1T500S6.DWG

TOLERANCES UNLESS OTHERWISE SPECIFIED PER ENGINEERING STANDARD ES- - - -

UNAUTHORIZED USE, MANUFACTURE OR REPRODUCTION IN WHOLE OR IN PART IS PROHIBITED. DRAWING, DESIGN AND OTHER DISCLOSURES PROPERTY OF EATON FILTRATION, LLC

NOTES:

- UNITS ARE TO BE DESIGNED, FABRICATED IN ACCORDANCE WITH ASME B & PV CODE, SECTION VIII, DIVISION 1 IN COMPLIANCE TO CURRENT PUBLISHED ADDENDA.
- ALL DIMENSIONS ARE IN INCHES.
- ALL BOLT HOLES ARE TO STRADDLE NATURAL CENTERLINES.
- DESIGN DATA:
  - DESIGN PRESSURE- 500 PSIG
  - DESIGN TEMPERATURE- 300° F
  - MIN. DESIGN METAL TEMP.- -20° F @ 500 PSIG
  - HYDROTEST PRESSURE- 768 PSIG
  - CORROSION ALLOWANCE- 0 INCHES
- MATERIAL : CAST STAINLESS STEEL

CUSTOMER:  
REG. NO.:  
P.O. NO.:  
TAG NO.:  
PART NO.: 1T500S6

<b>EATON</b>	<b>EATON FILTRATION, LLC</b> 900 FAIRMOUNT AVENUE, ELIZABETH, NEW JERSEY 07207				
	NAME <b>1" TYPE "T" GAS/LIQUID SEPARATOR 300# FLG. CAST SSTL</b>				
DRAWN FM	DATE 11/1/05	CHECKED LH	DATE 11/1/05		
APP FJM	DATE 11/1/05	SCALE NTS	ECR D507		
SIZE <b>A</b>	DWG NO	<b>SD1T500S6</b>			REV <b>A</b>