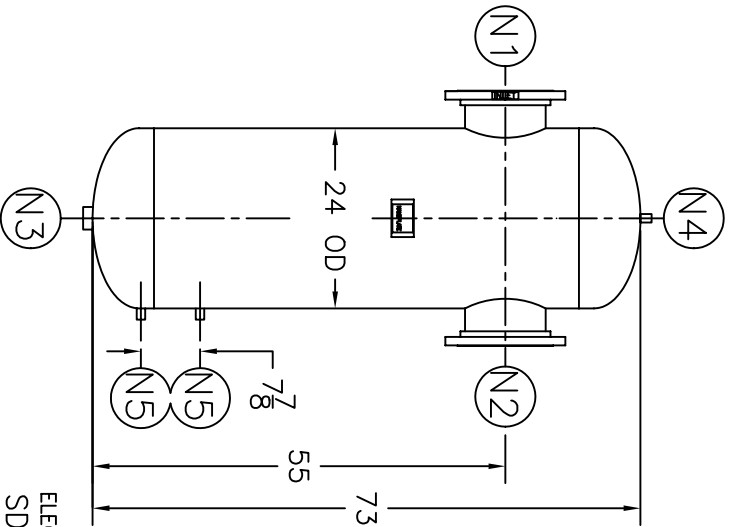
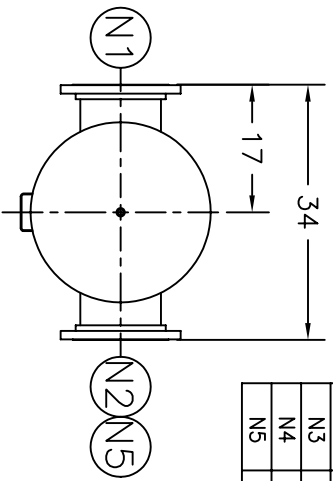


NOZZLE SCHEDULE			
ITEM	QTY.	NAME	DESCRIPTION
N1	1	INLET	10"-150# RFSO ASME B16.5
N2	1	OUTLET	10"-150# RFSO ASME B16.5
N3	1	DRAIN	2" NPT 3000# COUPLING
N4	1	VENT	1/2" NPT 3000# COUPLING
N5	2	W.G. CONNECTIONS	1/2" NPT 3000# COUPLING

REV	DATE	CHANGE	ECR	BY	APP
A	06/23/99	NEW ISSUE	6167	AB	DP
B	11/1/05	REVISED TITLE BLOCK	D507	FM	LH
C	08/08/06	CHG'D.: HTP FR. 225 PSIG	E136	LH	FM



ITEM	QTY.	NAME	DESCRIPTION	REV	DATE	CHANGE	ECR	BY	APP
N1	1	INLET	10"-150# RFSO ASME B16.5	A	06/23/99	NEW ISSUE	6167	AB	DP
N2	1	OUTLET	10"-150# RFSO ASME B16.5	B	11/1/05	REVISED TITLE BLOCK	D507	FM	LH
N3	1	DRAIN	2" NPT 3000# COUPLING	C	08/08/06	CHG'D.: HTP FR. 225 PSIG	E136	LH	FM
N4	1	VENT	1/2" NPT 3000# COUPLING						
N5	2	W.G. CONNECTIONS	1/2" NPT 3000# COUPLING						

NOTES:

- UNITS ARE TO BE DESIGNED, FABRICATED, AND CODE STAMPED (IF REQ'D) IN ACCORDANCE WITH ASME B & PV CODE, SECTION VIII, DIVISION 1 IN COMPLIANCE TO CURRENT PUBLISHED ADDENDA.
- ALL DIMENSIONS ARE IN INCHES.
- ALL BOLT HOLES ARE TO STRADDLE NATURAL CENTERLINES.
- SHIPPING WEIGHT: 975 POUNDS.
- DESIGN DATA:
  - DESIGN PRESSURE- 150 PSIG
  - DESIGN TEMPERATURE- 450° F
  - MIN. DESIGN METAL TEMP.- -20° F @ 150 PSIG
  - HYDROTEST PRESSURE- 195 PSIG
  - CORROSION ALLOWANCE- 0 INCHES
- MATERIAL: CARBON STEEL.

CUSTOMER:	
REG. NO.:	
P.O. NO.:	
TAG NO.:	
PART NO.:	10T150C/U

<b>EATON FILTRATION, LLC</b>			
900 FAIRMOUNT AVENUE, ELIZABETH, NEW JERSEY 07207			
NAME	10" TYPE "T" GAS/LIQUID		
	SEPARATOR 150# FLG (CSTL)		



ELECTRONIC FILE NAME:  
SD10T15C.DWG  
TOLERANCES UNLESS OTHERWISE SPECIFIED  
PER ENGINEERING STANDARD ES- --

UNAUTHORIZED USE, MANUFACTURE OR  
REPRODUCTION IN WHOLE OR IN PART IS  
PROHIBITED. DRAWING, DESIGN AND  
OTHER DISCLOSURES PROPERTY OF  
EATON FILTRATION, LLC

DRAWN	AB	DATE	06/22/99	CHECKED	DP	DATE	06/22/99
APP	--	DATE	--	SCALE	NTS	ECR	6167
SIZE	A	DWG NO		SD10T150C		REV	C