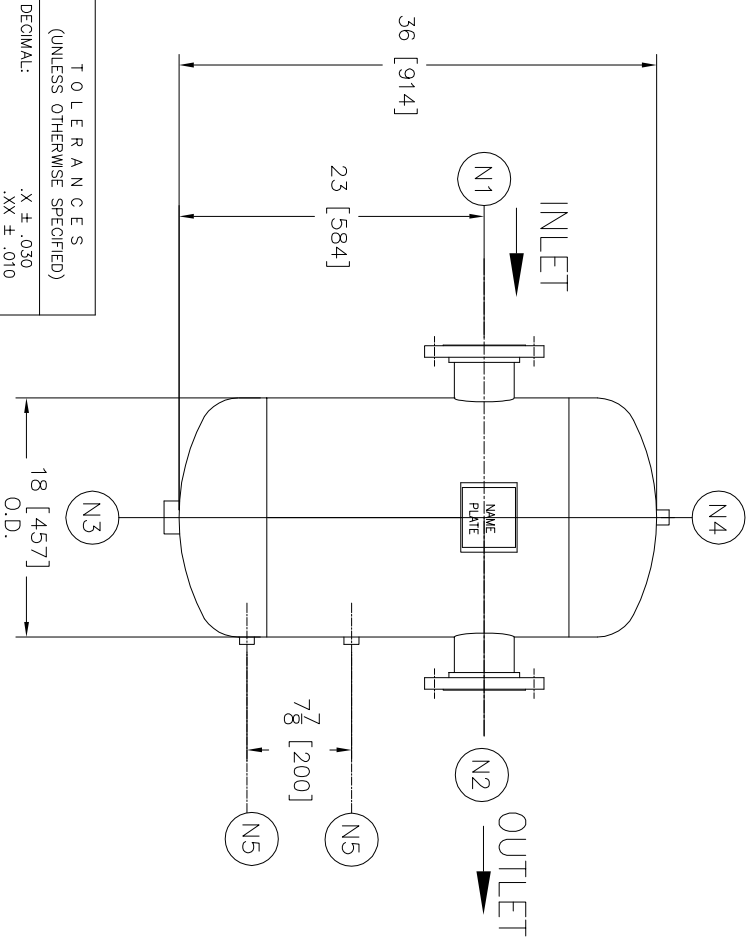
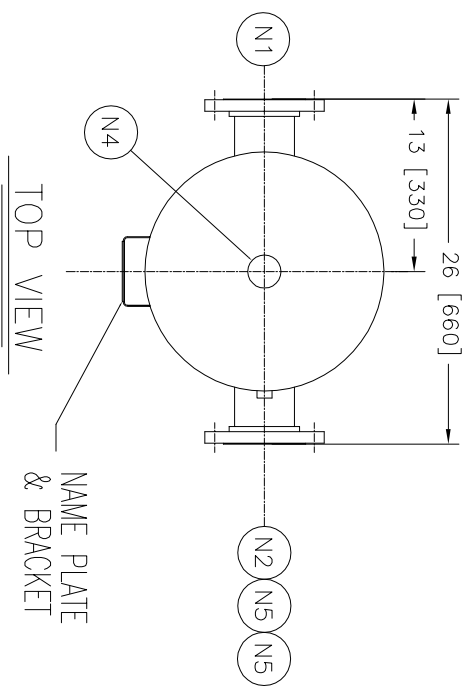


REVISIONS

REV	DESCRIPTION	BY	ECO	DATE
A	NEW ISSUE	LH	E468	2/19/2007
B	UPDATE TITLE BLOCK, PAINT WAS NONE	J. JOHNSON	0084313	4/16/2013



TOLERANCES
(UNLESS OTHERWISE SPECIFIED)

DECIMAL:
 .X ± .030
 .XX ± .010
 .XXX ± .005

FRACTIONAL:
 NOZZLE & TO FLOOR: $\frac{1}{8}$ " < 4" > $\frac{1}{4}$ "
 FACE TO FACE: $\pm \frac{1}{16}$
 ANGLAR: $\pm 1^\circ$
 FLANGES (H/V): $\pm \frac{1}{32}$
 VESSEL OVERALL HT: 1°
 BOLT HOLES MUST STRADDLE & MACHINED PARTS TO BE FREE OF BURRS FOR ADDITIONAL TOLERANCE DETAILS
 REF. ES-211, ES-222 AND ES-223

REVIEWED FOR CLASSIFICATION PER PR-4

CRITICAL **SIGNIFICANT**

CUSTOMER INFO

NAME	
P.O. NO.	
TAG NO.	
S.O. NO.	
PART NO.	412R150C/U

NOTES:

- UNITS ARE TO BE DESIGNED, FABRICATED & CODE STAMPED (IF REQ'D) IN ACCORDANCE WITH ASME B & PV CODE, SECTION VIII, DIVISION 1 IN COMPLIANCE TO CURRENT PUBLISHED ADDENDA.
- ALL DIMENSIONS ARE IN INCHES.
- ALL BOLT HOLES ARE TO STRADDLE NATURAL CENTERLINES.
- SHIPPING WEIGHT: 335 POUNDS.
- DESIGN DATA:

- DESIGN PRESSURE- 150 PSIG
- DESIGN TEMPERATURE- 450° F
- MIN. DESIGN METAL TEMP.- -20° F @ 150 PSIG
- HYDROTEST PRESSURE- 195 PSIG
- CORROSION ALLOWANCE- 0 INCHES
- MATERIAL: CARBON STEEL.
- PAIN PER EATON STD ES-317

NOZZLE SCHEDULE

ITEM	QTY.	NAME	DESCRIPTION
N1	1	INLET	4"-150# RFSO ASME B16.5
N2	1	OUTLET	4"-150# RFSO ASME B16.5
N3	1	DRAIN	1-1/2" NPT 3000# HALF COUPLING
N4	1	VENT	1/2" NPT 3000# HALF COUPLING
N5	2	W.G.	1/2" NPT 3000# HALF COUPLING

DRAWN BY
LH

SCALE
AS DRAWN

RESTRICTION
RESTRICTED

SHEET
1 OF 1

PROJECTION
THIRD ANGLE

EATON FILTRATION, LLC
DESIGN CENTER
TINTON FALLS, NEW JERSEY, USA • PORTAGE, MICHIGAN, USA

TITLE
4" TYPE "12R" GAS/LIQUID RECEIVER 150# FLG CSTL

DATE	SIZE	DWG FILENAME	REV
02/15/2007	A	SD412R150C	B

EATON CORPORATION - CONFIDENTIAL AND PROPRIETARY NOTICE TO PERSONS RECEIVING THIS DRAWING AND/OR TECHNICAL INFORMATION: THIS DOCUMENT, INCLUDING THE DRAWING AND INFORMATION CONTAINED THEREON IS CONFIDENTIAL AND IS THE EXCLUSIVE PROPERTY OF EATON. AT ANY TIME, BY TAKING THE POSSESSION OF THIS DOCUMENT THE RECIPIENT ACKNOWLEDGES AND AGREES THAT THIS DOCUMENT CANNOT BE USED IN ANY MANNER ADVERSE TO THE INTEREST OF EATON AND THAT NO PORTION OF THIS DRAWING MAY BE COPIED OR OTHERWISE REPRODUCED WITHOUT THE PRIOR WRITTEN CONSENT OF EATON. IN THE CASE OF CONFLICTING CONTRACTUAL PROVISIONS, 2018 EATON CORPORATION - ALL RIGHTS RESERVED.