

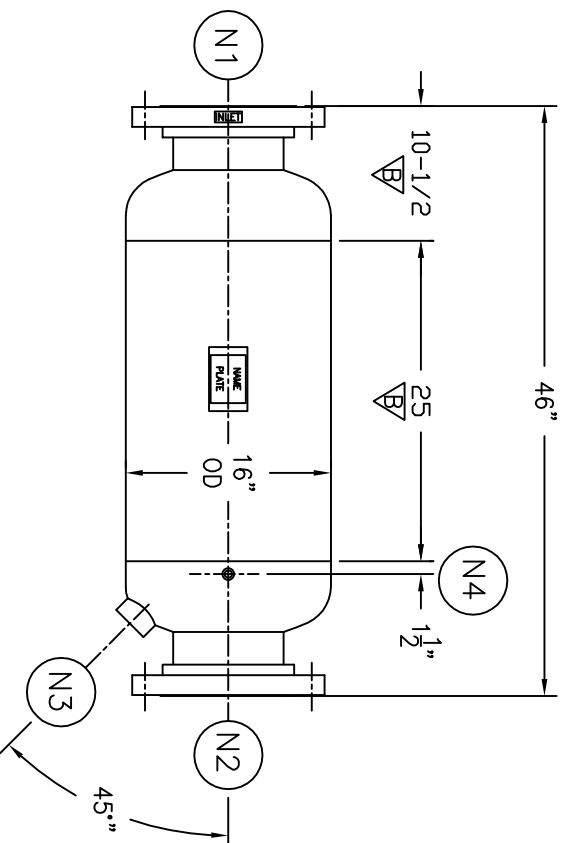
NOZZLE SCHEDULE		DESCRIPTION
ITEM	QTY.	NAME
N1	1	INLET 8"-150# RFSO ASME B16.5
N2	1	OUTLET 8"-150# RFSO ASME B16.5
N3	1	DRAIN 2" NPT 3000# HALF COUPLING
N4	1	VENT 1/2" NPT 3000# HALF COUPLING

REV	DATE	CHANGE	ECR	BY	APP
A	10/01/02	NEW ISSUE	A900	GC	FJM
B	9/29/05	REVISED C.A. FROM 0" TO 1/16"	D452	GO	LH
C	11/1/05	REVISED TITLE BLOCK	D507	FM	LH

NOTES:

1. UNITS ARE TO BE DESIGNED, FABRICATED & "U" OR "UM" STAMPED (IF REQ'D) IN ACCORDANCE WITH ASME B & PV CODE, SECTION VIII, DIVISION 1 IN COMPLIANCE TO CURRENT PUBLISHED ADDENDA.
2. ALL DIMENSIONS ARE IN INCHES.
3. ALL BOLT HOLES ARE TO STRADDLE NATURAL CENTERLINES.
4. SHIPPING WEIGHT: 375 POUNDS.
5. DESIGN DATA:

- DESIGN PRESSURE- 150 PSIG
 DESIGN TEMPERATURE- 450° F
 MIN. DESIGN METAL TEMP.- -20° F @ 150 PSIG
 HYDROTEST PRESSURE- 195 PSIG
 CORROSION ALLOWANCE- 1/16 INCHES ∇
6. MATERIAL: CARBON STEEL.



CUSTOMER:	
REG. NO.:	
P.O. NO.:	
TAG NO.:	
PART NO.:	831L150C/U/M

EATON

EATON FILTRATION, LLC
 900 FAIRMOUNT AVENUE, ELIZABETH, NEW JERSEY 07207

NAME: 8" TYPE "31-L" GAS/LIQUID SEPARATOR 150# FLG (CSTL)

ELECTRONIC FILE NAME:
SD831L15C.DWG

TOLERANCES UNLESS OTHERWISE SPECIFIED
PER ENGINEERING STANDARD ES- --

UNAUTHORIZED USE, MANUFACTURE OR
REPRODUCTION IN WHOLE OR IN PART IS
PROHIBITED. DRAWING, DESIGN AND
OTHER DISCLOSURES PROPERTY OF
EATON FILTRATION, LLC

DRAWN	GC	DATE	9/27/02	CHECKED	VA	DATE	9/27/02
APP	FJM	DATE	9/27/02	SCALE	NTS	ECR	A900
SIZE	DWG	SD831L15C		REV		C	