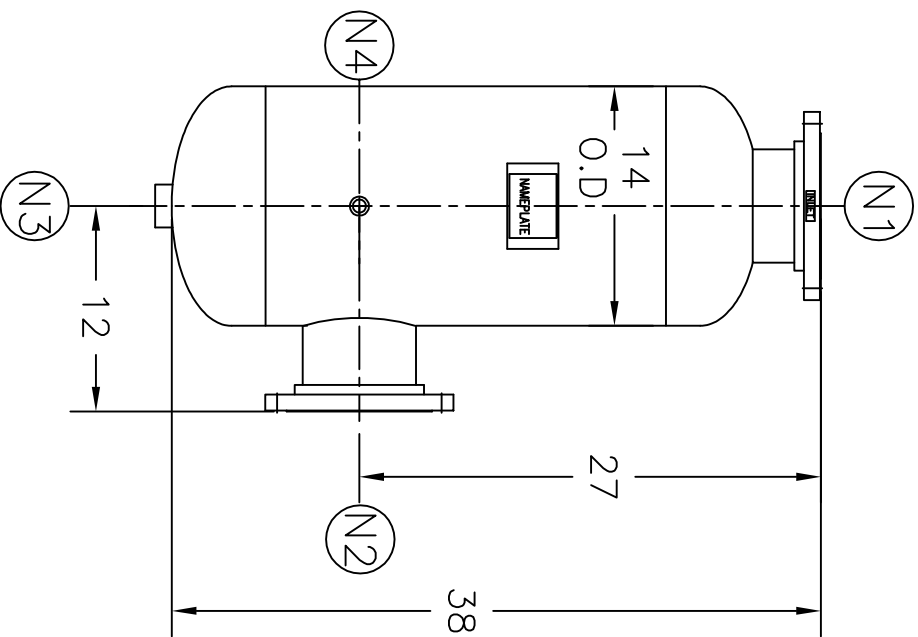


NOZZLE SCHEDULE			
ITEM	QTY.	NAME	DESCRIPTION
N1	1	INLET	6"-150# RFSO ASME B16.5
N2	1	OUTLET	6"-150# RFSO ASME B16.5
N3	1	DRAIN	1-1/2" NPT 3000# COUPLING
N4	1	VENT	1/2" NPT 3000# COUPLING



REV	DATE	CHANGE	ECR	BY	APP
A	9/17/01	NEW ISSUE	9826	GC	VH
B	11/1/05	REVISED TITLE BLOCK	0507	FM	LH

NOTES:

1. UNITS ARE TO BE DESIGNED, FABRICATED, AND "U" OR "UM" STAMPED (IF REQUIRED) IN ACCORDANCE WITH ASME B & PV CODE, SECTION VIII, DIVISION 1 IN COMPLIANCE TO CURRENT PUBLISHED ADDENDA.
2. ALL DIMENSIONS ARE IN INCHES.
3. ALL BOLT HOLES ARE TO STRADDLE NATURAL CENTERLINES.
4. SHIPPING WEIGHT: 250 POUNDS.
5. DESIGN DATA:

- DESIGN PRESSURE- 150 PSIG
- DESIGN TEMPERATURE- 450° F
- MIN. DESIGN METAL TEMP. - -20° F @ 150 PSIG
- HYDROTEST PRESSURE- 195 PSIG
- CORROSION ALLOWANCE- 0 INCHES
- 6. MATERIAL: CARBON STEEL.

CUSTOMER:
 REG. NO.:
 P.O. NO.:
 TAG NO.:
 PART NO.: 633L150C, 633L150CU, & 633L150CM



EATON FILTRATION, LLC
 900 FAIRMOUNT AVENUE, ELIZABETH, NEW JERSEY 07207
 NAME
6" TYPE "33-L" GAS/LIQUID SEPARATOR 150# FLG CSTL

ELECTRONIC FILE NAME:
 SD633L15.DWG
 TOLERANCES UNLESS OTHERWISE SPECIFIED
 PER ENGINEERING STANDARD ES- --
 UNAUTHORIZED USE, MANUFACTURE OR
 REPRODUCTION IN WHOLE OR IN PART IS
 PROHIBITED. DRAWING, DESIGN AND
 OTHER DISCLOSURES PROPERTY OF
 EATON FILTRATION, LLC

DRAWN	GC	DATE	CHECKED	FJM	DATE	9/18/01	
APP	VH	DATE	SCALE	NTS	ECR	9826	
SIZE	DWG	NO	SD633L150C				REV
A							B