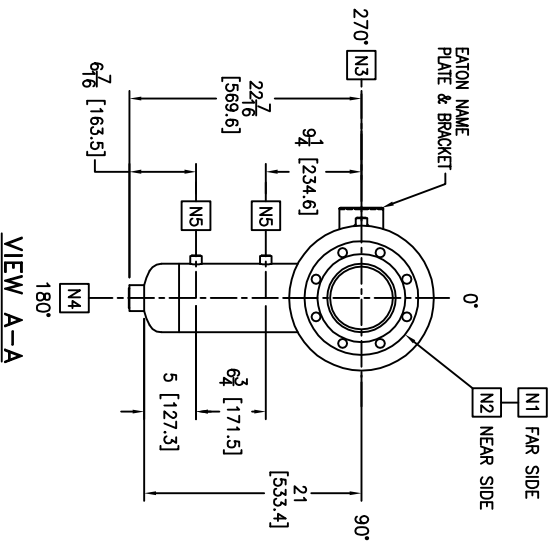
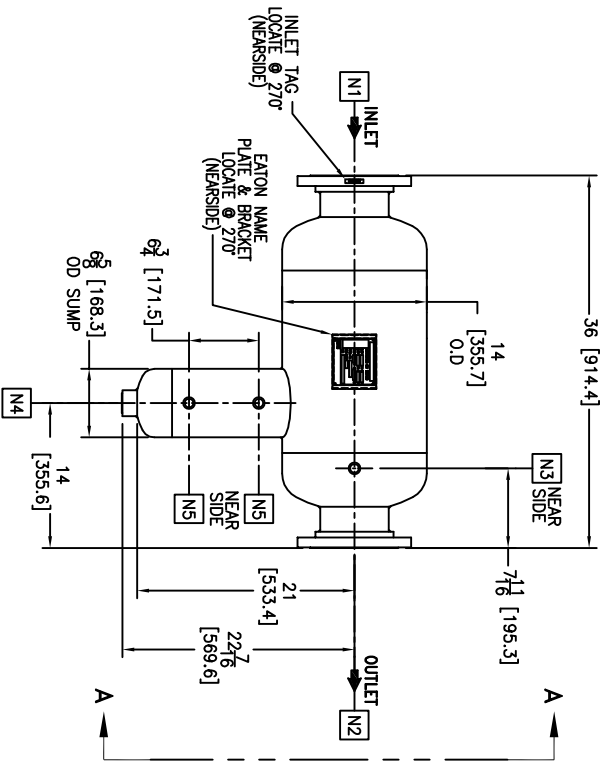


| NOZZLE SCHEDULE |        |               |        |       |              |
|-----------------|--------|---------------|--------|-------|--------------|
| MARK            | SIZE   | TYPE          | RATING | NECK  | SERVICE      |
| N1              | 6      | RFSO FLANGE   | 150#   | 0:134 | INLET        |
| N2              | 6      | RFSO FLANGE   | 150#   | 0:134 | OUTLET       |
| N3              | 1/2"   | OPLG HALF NPT | 3000#  | ---   | VENT         |
| N4              | 1-1/2" | OPLG HALF NPT | 3000#  | ---   | DRAIN        |
| N5              | 1/2"   | OPLG HALF NPT | 3000#  | ---   | LIQUID LEVEL |

| CUSTOMER INFO |          |
|---------------|----------|
| NAME          | P.O. NO. |
| QTY.          | S.O. NO. |
| PART NO.      |          |
|               |          |
|               |          |
| 631LS150S     |          |

| REVISIONS |             |     |                   |
|-----------|-------------|-----|-------------------|
| REV       | DESCRIPTION | BY  | DATE              |
| A         | NEW RELEASE | FJM | 01/31/75 02/16/17 |



- NOTES:**
1. UNITS ARE DESIGNED, FABRICATED, BUT NOT STAMPED IN ACCORDANCE WITH THE ASME BOILER & PRESSURE VESSEL CODE SECTION VIII, DIVISION 1, IN COMPLIANCE TO CURRENT MANDATORY EDITION.
  2. DIMENSIONS SHOWN IN [ ] ARE IN MILLIMETERS AND FOR REFERENCE ONLY. ACCEPTANCE OF THIS PART WILL BE BASED ON "INCH" UNITS & TOLERANCES ONLY.
  3. ALL BOLT HOLES ARE TO STRADDLE NATURAL CENTERLINES.
  4. APPROX. WEIGHT: 175 POUNDS.
  5. DESIGN DATA:  
 DESIGN PRESSURE- 150 PSIG  
 DESIGN TEMPERATURE- 300°F  
 MIN. DESIGN METAL TEMP.- -20°F AT 150 PSIG  
 HYDROTEST PRESSURE- 206 PSIG  
 CORROSION ALLOWANCE- 0 INCHES  
 RADIOGRAPHY- NONE
  6. MATERIAL: SS-304 STAINLESS STEEL

| TOLERANCES (UNLESS OTHERWISE SPECIFIED) |              |
|---|--------------|
| DECIMAL:                                | FRACTIONAL:  |
| X ± .030                                | 1/16 ± 1/32  |
| XX ± .010                               | 1/32 ± 1/64  |
| XXX ± .005                              | 1/64 ± 1/128 |

NOZZLE & TO FLOOR: ± .005  
 FACE TO FACE: ± .005  
 ANGLE: ± .005  
 FLANGES (H/M): 1/2 ± .005  
 VESSEL OVERALL HT: 1" ± .005  
 BOLT HOLES MUST STRADDLE & MACHINED PARTS TO BE FREE OF BURRS FOR ADDITIONAL TOLERANCE DETAILS SEE DES-211, SIZE Z AND DES-223 REF. DES-211, SIZE Z AND DES-223

REVIEWED FOR CONSTRUCTION PER PN-4  
 CRITICAL SIGNIFICANT

| DRAWN BY    |             | TITLE                                |              |
|-------------|-------------|--------------------------------------|--------------|
| FJM         | SCALE       | 6" TYPE "31-LS" GAS/LIQUID SEPARATOR | DATE         |
| AS DRAWN    | RESTRICTION | 6"-150# RFSO FLANGES MAT'L. SS-304   | 02/16/17     |
| RESTRICTION | SHEET       |                                      |              |
| 1 OF 1      | THIRD ANGLE |                                      |              |
|             | DATE        | SIZE                                 | DWG FILENAME |
|             | 02/16/17    | B                                    | SD631LS150S  |
|             |             |                                      | REV          |
|             |             |                                      | A            |



HYDRAULICS GROUP  
 FILTRATION DIVISION  
 GALESBURG, MICHIGAN, USA • TINTON FALLS, NEW JERSEY, USA

THIS DOCUMENT, INCLUDING THE DRAWING AND INFORMATION CONTAINED HEREIN IS CONFIDENTIAL AND IS THE PROPERTY OF EATON. IT IS TO BE KEPT UNDEVELOPED AND NOT REPRODUCED OR TRANSMITTED IN ANY FORM OR BY ANY MEANS, ELECTRONIC OR MECHANICAL, INCLUDING PHOTOCOPYING, RECORDING, OR BY ANY INFORMATION STORAGE AND RETRIEVAL SYSTEM, WITHOUT THE WRITTEN CONSENT OF EATON. IN THE CASE OF CONSTRUCTION CONTRACTUAL PROVISIONS, THE EATON CORPORATION SHALL BE THE OWNER OF THIS DOCUMENT.