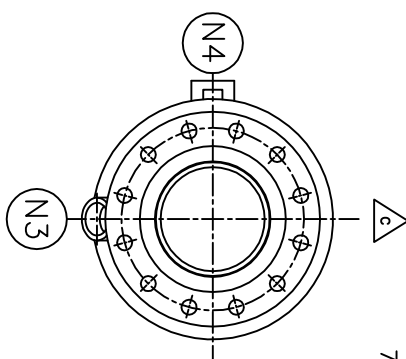
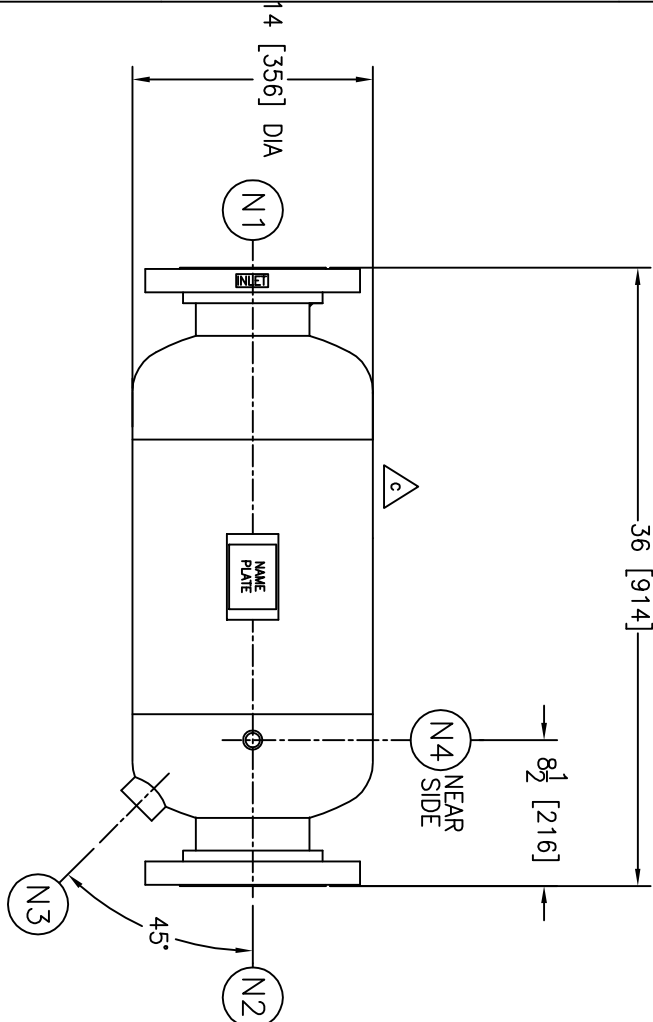


NOZZLE SCHEDULE			
ITEM	QTY.	NAME	DESCRIPTION
N1	1	INLET	6"-300# RFSO ANSI B16.5 W/ STD. WT. PIPE
N2	1	OUTLET	6"-300# RFSO ANSI B16.5 W/ STD. WT. PIPE
N3	1	DRAIN	1 1/2" NPT 3000# HALF COUPLING
N4	1	VENT	1/2" NPT 3000# HALF COUPLING



△

- NOTES:
- UNITS ARE TO BE DESIGNED, FABRICATED, & "U" OR "UM" STAMPED IN ACCORDANCE WITH ASME B & PV CODE, SECTION VIII, DIVISION 1 IN COMPLIANCE TO CURRENT MANDATORY EDITION.
 - ALL DIMENSIONS ARE IN INCHES.
 - ALL BOLT HOLES ARE TO STRADDLE NATURAL CENTERLINES.
 - SHIPPING WEIGHT: 260 POUNDS
 - DESIGN DATA:
 - DESIGN PRESSURE- 250 PSIG
 - DESIGN TEMPERATURE- 650° F
 - MIN. DESIGN METAL TEMP.- -20° F @ 250 PSIG
 - HYDROTEST PRESSURE- 325 PSIG
 - CORROSION ALLOWANCE- 0 INCHES
 - 6. MATERIAL: CARBON STEEL.
 - 7. PAINT PER ES-309.

REV	DATE	CHANGE	ECR	BY	APP
A	05/02/01	NEW ISSUE	9435	FJM	VH
B	11/1/05	REVISED TITLE BLOCK	D507	FM	LH
C	06/11/10	REMOVE 1-1/2" INSPECTION NS	0131919	JY	FM

△

CUSTOMER:
 REG. NO.:
 P.O. NO.:
 TAG NO.:
 PART NO.: 631L250C/M/U

ELECTRONIC FILE NAME:
 631L250C.DWG
 TOLERANCES UNLESS OTHERWISE SPECIFIED
 PER ENGINEERING STANDARD ES- --

UNAUTHORIZED USE, MANUFACTURE OR
 REPRODUCTION IN WHOLE OR IN PART IS
 PROHIBITED. DRAWING, DESIGN AND
 OTHER DISCLOSURES PROPERTY OF
 EATON FILTRATION, LLC



EATON FILTRATION, LLC
 44 APPLE STREET, TINTON FALLS, NEW JERSEY 07724
 NAME: 6" TYPE "31-L" GAS/LIQUID
 SEPARATOR 300# FLG (CSTL)

DRAWN	FJM	DATE	05/02/01	CHECKED	LH	DATE	05/02/01
APP	VH	DATE	05/02/01	SCALE	1/8	ECR	9435
SIZE	B	DWG	NO	SD631L250C		REV	C