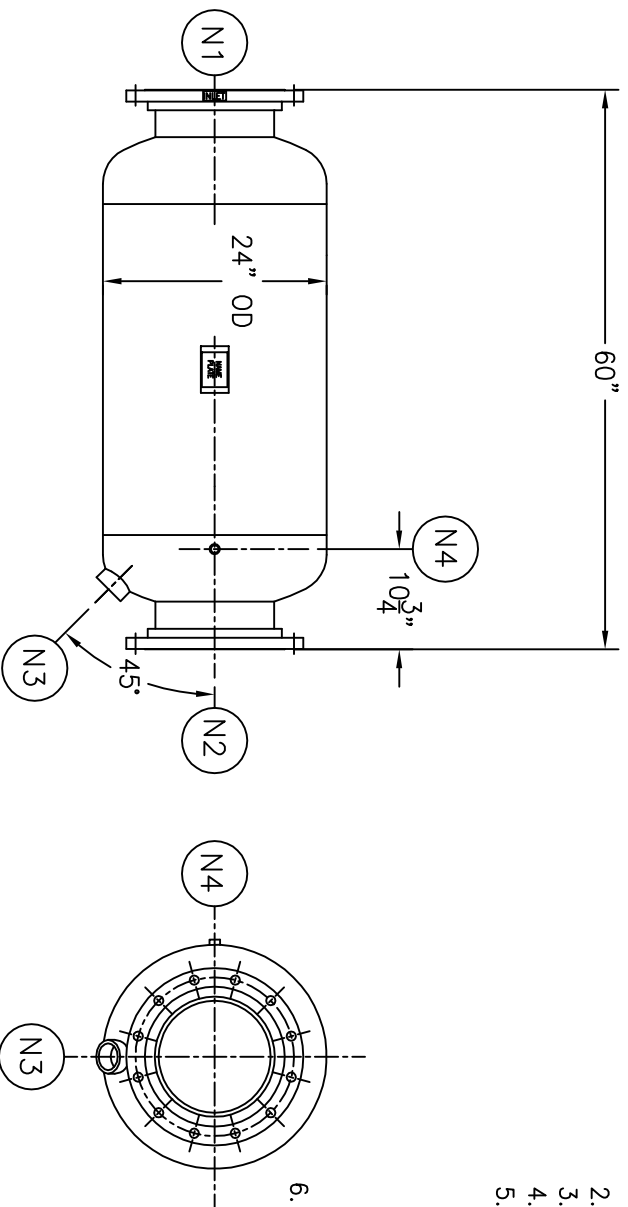


NOZZLE SCHEDULE	
ITEM	DESCRIPTION
N1	12"-300# RF&SO ASME B16.5 W/ XH PIPE
N2	12"-300# RF&SO ASME B16.5 W/ XH PIPE
N3	2 1/2" NPT 3000# COUPLING
N4	1/2" NPT 3000# COUPLING

REV	DATE	CHANGE	ECR	BY	APP
A	5/12/06	NEW ISSUE	D939	FM	FJM



NOTES:

1. UNITS ARE TO BE DESIGNED, FABRICATED & "U" STAMPED IN ACCORDANCE WITH ASME B & PV CODE, SECTION VIII, DIVISION 1 IN COMPLIANCE TO CURRENT PUBLISHED ADDENDA.
2. ALL DIMENSIONS ARE IN INCHES.
3. ALL BOLT HOLES ARE TO STRADDLE NATURAL CENTERLINES.
4. SHIPPING WEIGHT: 950 POUNDS.
5. DESIGN DATA:
 DESIGN PRESSURE- 250 PSIG
 DESIGN TEMPERATURE- 650° F
 MIN. DESIGN METAL TEMP.- -20° F @ 250 PSIG
 HYDROTEST PRESSURE- 325 PSIG
 CORROSION ALLOWANCE- 0 INCHES
6. MATERIAL: CARBON STEEL.

CUSTOMER:
 REG. NO.:
 P.O. NO.:
 TAG NO.:
 PART NO.: 1231L250C/U

EATON

EATON FILTRATION, LLC
 900 FAIRMOUNT AVENUE, ELIZABETH, NEW JERSEY 07207

NAME: 12" TYPE "31-L" GAS/LIQUID SEPARATOR 300# FLG CSTL

ELECTRONIC FILE NAME:
 SD1231L250C.DWG

TOLERANCES UNLESS OTHERWISE SPECIFIED
 PER ENGINEERING STANDARD ES- --

UNAUTHORIZED USE, MANUFACTURE OR
 REPRODUCTION IN WHOLE OR IN PART IS
 PROHIBITED. DRAWING, DESIGN AND
 OTHER DISCLOSURES PROPERTY OF
 EATON FILTRATION, LLC

DRAWN	FM	DATE	5/12/06	CHECKED	LH	DATE	5/12/06
APP	FJM	DATE	5/12/06	SCALE	NTS	ECR	D939
SIZE	DWG	A		SD1231L250C		REV	A