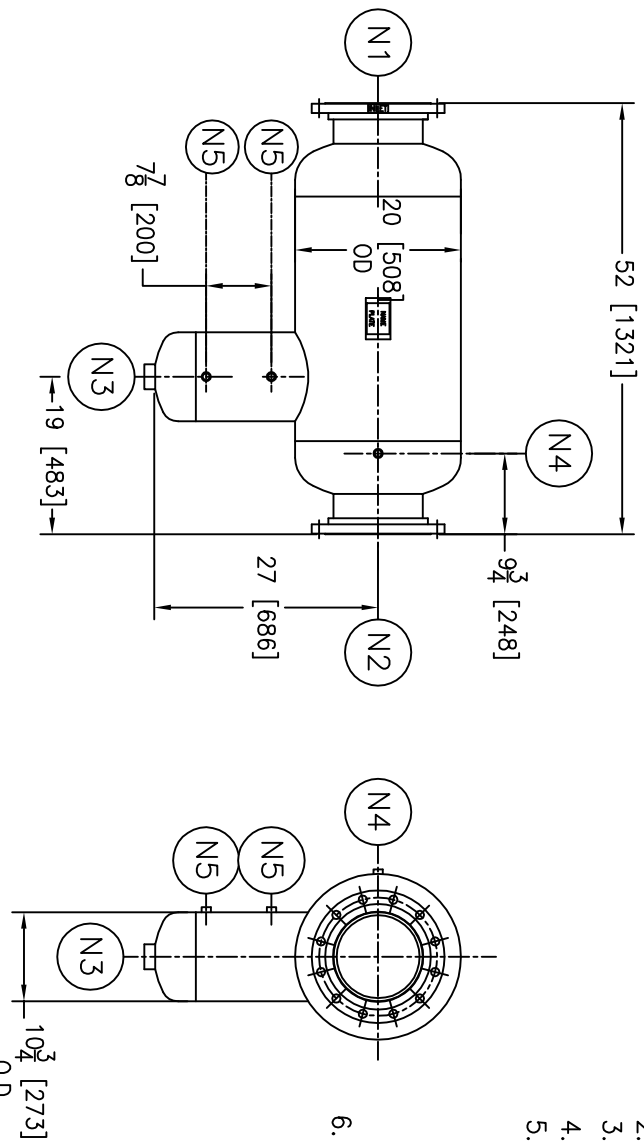


| NOZZLE SCHEDULE |      | REV          | DATE                                       | CHANGE | ECR      | BY        | APP         |
|-----------------|------|--------------|--|--------|----------|-----------|-------------|
| ITEM            | QTY. | NAME         | DESCRIPTION                                |        |          |           |             |
| N1              | 1    | INLET        | 10" -150# RFSO ASME B16.5 W/ SCH. 10S PIPE | A      | 01/15/07 | NEW ISSUE | E402 LH FJM |
| N2              | 1    | OUTLET       | 10" -150# RFSO ASME B16.5 W/ SCH. 10S PIPE |        |          |           |             |
| N3              | 1    | DRAIN        | 2" NPT 3000# COUPLING                      |        |          |           |             |
| N4              | 1    | VENT         | 1/2" NPT 3000# COUPLING                    |        |          |           |             |
| N5              | 2    | LIQUID LEVEL | 1/2" NPT 3000# COUPLING                    |        |          |           |             |

NOTES:

1. UNITS ARE TO BE DESIGNED, FABRICATED BUT NOT STAMPED IN ACCORDANCE WITH ASME B & PV CODE, SECTION VIII, DIVISION 1 IN COMPLIANCE TO CURRENT PUBLISHED ADDENDA.
2. ALL DIMENSIONS ARE IN INCHES [MM].
3. ALL BOLT HOLES ARE TO STRADDLE NATURAL CENTERLINES.
4. SHIPPING WEIGHT: 400 POUNDS
5. DESIGN DATA:  
 DESIGN PRESSURE - 150 PSIG  
 DESIGN TEMPERATURE - 300° F  
 MIN. DESIGN METAL TEMP. - -20° F @ 150 PSIG  
 HYDROTEST PRESSURE - 206 PSIG  
 MATERIAL: 304/304L S. STEEL



ELECTRONIC FILE NAME:  
 SD1031LS150S.DWG  
 TOLERANCES UNLESS OTHERWISE SPECIFIED  
 PER ENGINEERING STANDARD ES- --

UNAUTHORIZED USE, MANUFACTURE OR  
 REPRODUCTION IN WHOLE OR IN PART IS  
 PROHIBITED. DRAWING, DESIGN AND  
 OTHER DISCLOSURES PROPERTY OF  
 EATON FILTRATION, LLC

|       |     |  |              |         |     |      |          |
|-------|-----|--|--------------|---------|-----|------|----------|
|       |     | <b>EATON FILTRATION, LLC</b><br>900 FAIRMOUNT AVENUE, ELIZABETH, NEW JERSEY 07207  |              |         |     |      |          |
|       |     | NAME<br><b>10" TYPE "31-LS" GAS/LIQUID<br/>         SEPARATOR 150# FLG S.STEEL</b> |              |         |     |      |          |
| DRAWN | LH  | DATE   | 01/12/07     | CHECKED | FM  | DATE | 01/15/07 |
| APP   | FJM | DATE   | 01/15/07     | SCALE   | NTS | ECR  | E402     |
| SIZE  | DWG | NO   | SD1031LS150S |         | REV | A    |          |