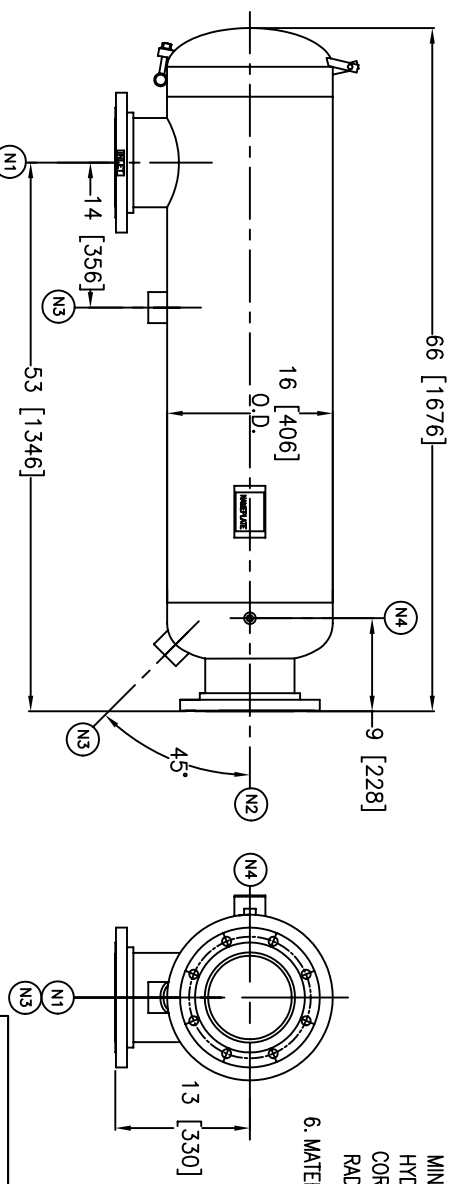


NOZZLE SCHEDULE		
MARK	QTY.	NAME DESCRIPTION
N1	1	8"-150# RFSO ASME B16.5
N2	1	8"-150# RFSO ASME B16.5
N3	2	2" NPT 3000# COUPLING
N4	1	1/2" NPT 3000# COUPLING

REV	DATE	CHANGE	EOR	BY	APP
A	11/03/06	NEW ISSUE	E299	LH	FJM

NOTES:

1. UNITS ARE TO BE DESIGNED AND FABRICATED & "U" STAMPED (IF REQUIRED) IN ACCORDANCE WITH ASME BOILER & PRESSURE VESSEL CODE, SECTION VIII, DIVISION 1, IN COMPLIANCE TO CURRENT PUBLISHED ADDENDA.
2. ALL DIMENSIONS ARE IN INCHES [MM].
3. ALL BOLT HOLES ARE TO STRADDLE NATURAL CENTERLINES.
4. SHIPPING WEIGHT: 525 POUNDS.
5. DESIGN DATA:
 - DESIGN PRESSURE- 150 PSIG
 - DESIGN TEMPERATURE- 450° F
 - MIN. DESIGN METAL TEMP.- -20° F @ 450 PSIG
 - HYDROTEST PRESSURE- 195 PSIG
 - CORROSION ALLOWANCE- 0 INCHES
 - RADIOGRAPHY - NONE



6. MATERIAL: CARBON STEEL

CUSTOMER: -	
REG. NO. : -	
P.O. NO.: -	
TAG NO. : -	
PART NO. : 836LCLC150C/U	

ELECTRONIC FILE NAME:
836LCLC150C.DWG

TOLERANCES UNLESS OTHERWISE SPECIFIED
PER ENGINEERING STANDARD ES--

UNAUTHORIZED USE, MANUFACTURE OR
REPRODUCTION IN WHOLE OR IN PART IS
PROHIBITED. DRAWING, DESIGN AND
OTHER DISCLOSURES PROPERTY OF
EATON FILTRATION, LLC



EATON FILTRATION, LLC
900 FARMOUNT AVENUE, ELIZABETH, NEW JERSEY 07207

NAME 8" TYPE "36L-CLC" GAS/ LIQUID
SEPARATOR, 150#FLG, C. STEEL

DRAWN	LH	DATE	11/02/06	CHECKED	FM	DATE	11/03/06	
APP	FJM	DATE	11/03/06	SCALE	NTS	EOR	E299	
SIZE	DWG	NO						
A								
SD836LCLC150C							REV	A