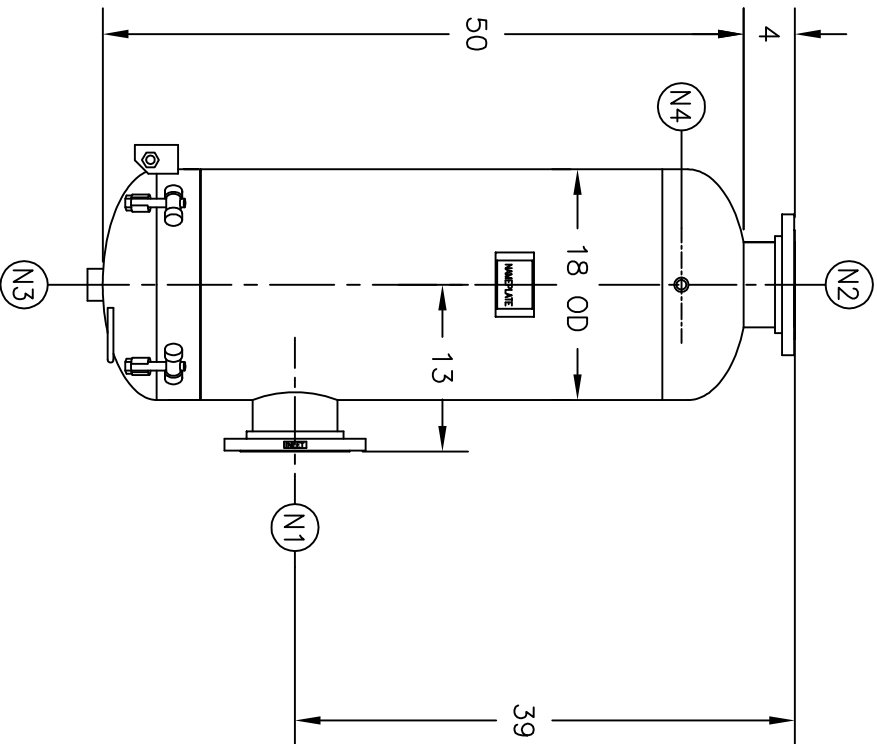


NOZZLE SCHEDULE		DESCRIPTION
ITEM	QTY.	NAME
N1	1	INLET
N2	1	OUTLET
N3	1	DRAIN
N4	1	VENT

REV	DATE	CHANGE	ECR	BY	APP
A	07/19/00	NEW ISSUE	8727	FJM	FG
B	11/1/05	REVISED TITLE BLOCK	D509	FM	LH
C	2/2/12	UPDATE WEIGHT, PART NUMBER, & ADDRESS	0066580	JY	LH



NOTES:

1. UNITS ARE TO BE DESIGNED, FABRICATED & CODE STAMPED (IF REQ'D) IN ACCORDANCE WITH ASME B & PV CODE, SECTION VIII, DIVISION 1 IN COMPLIANCE TO CURRENT PUBLISHED ADDENDA.
2. ALL DIMENSIONS ARE IN INCHES.
3. ALL BOLT HOLES ARE TO STRADDLE NATURAL CENTERLINES.
4. APPROX. WEIGHT: 530 POUNDS.
5. DESIGN DATA:

DESIGN PRESSURE-	150 PSIG
DESIGN TEMPERATURE-	450° F
MIN. DESIGN METAL TEMP.-	-20° F @ 150 PSIG
HYDROTEST PRESSURE-	195 PSIG
CORROSION ALLOWANCE-	0 INCHES
6. MATERIAL: CARBON STEEL.

ELECTRONIC FILE NAME:
635LCLC150C.DWG
TOLERANCES UNLESS OTHERWISE SPECIFIED
PER ENGINEERING STANDARD ES- 211

UNAUTHORIZED USE, MANUFACTURE OR
REPRODUCTION IN WHOLE OR IN PART IS
PROHIBITED. DRAWING, DESIGN AND
OTHER DISCLOSURES PROPERTY OF
EATON FILTRATION, LLC



CUSTOMER:
REG. NO.:
P.O. NO.:
TAG NO.:
PART NO.: 635LCLC150C/U

EATON	EATON FILTRATION, LLC	
	70 WOOD AVENUE SOUTH, ISELIN, NEW JERSEY 08830	
NAME	6" TYPE "35L-CLC" GAS/LIQUID SEPARATOR 150# FLG (CSTL)	

DRAWN	FJM	DATE	CHECKED	FC	DATE	REV
App	FG	07/19/00	SCALE	1:16	EGR	8727
SIZE	DWG	No	SD635LCLC150C		REV	C