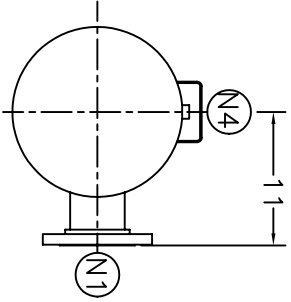
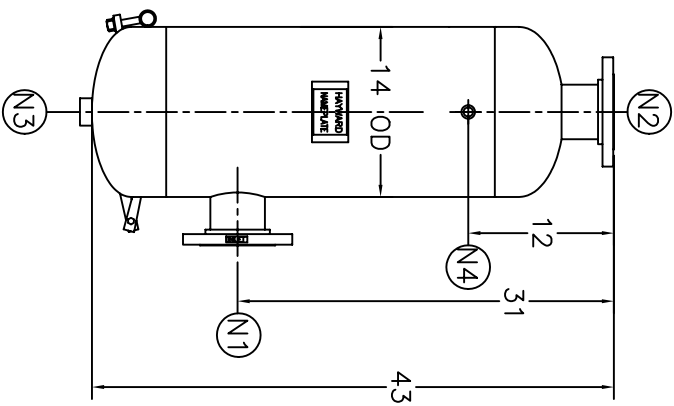


NOZZLE SCHEDULE		ITEM	QTY.	NAME	DESCRIPTION
N1	1	INLET	4" - 150#	RFSO ASME B16.5	W/STD WT PIPE
N2	1	OUTLET	4" - 150#	RFSO ASME B16.5	W/STD WT PIPE
N3	1	DRAIN	1-1/2" NPT	3000#	COUPLING
N4	1	VENT	1/4" NPT	3000#	COUPLING

REV	DATE	CHANGE	ECR	BY	APP
A	9/21/00	NEW ISSUE	8885	GC	FG



NOTES:

- UNITS ARE TO BE DESIGNED, FABRICATED, & U OR UM STAMPED (IF REQUIRED) IN ACCORDANCE WITH ASME B & PV CODE, SECTION VIII, DIVISION 1 IN COMPLIANCE TO CURRENT PUBLISHED ADDENDA.
- ALL DIMENSIONS ARE IN INCHES.
- ALL BOLT HOLES ARE TO STRADDLE NATURAL CENTERLINES.
- SHIPPING WEIGHT: 305 POUNDS.
- DESIGN DATA:
 DESIGN PRESSURE- 150 PSIG
 DESIGN TEMPERATURE- 450° F
 MIN. DESIGN METAL TEMP.-20° F @ 150 PSIG
 HYDROTEST PRESSURE- 195 PSIG
 CORROSION ALLOWANCE- 0 INCHES
- MATERIAL: CARBON STEEL.
- PAINT: PER ES-317

CUSTOMER:
 REG. NO.:
 P.O. NO.:
 TAG NO.:
 PART NO.: 435LCLC150C, 435LCLC150CU,
 435LCLC150CM

ELECTRONIC FILE NAME:
 435LCLCC.DWG
 TOLERANCES UNLESS OTHERWISE SPECIFIED
 PER ENGINEERING STANDARD ES- --

UNAUTHORIZED USE, MANUFACTURE OR
 REPRODUCTION IN WHOLE OR IN PART IS
 PROHIBITED. DRAWING, DESIGN AND
 OTHER DISCLOSURES PROPERTY OF
 EATON FILTRATION, LLC

		EATON FILTRATION, LLC 900 FAIRMOUNT AVENUE, ELIZABETH, NEW JERSEY 07207					
		NAME 4" TYPE 35L-CLC GAS/LIQUID SEPARATOR 150# FLG. CSTL					
DRAWN	GC	DATE	9/21/00	CHECKED	FJM	DATE	9/22/00
APP	FG	DATE	9/22/00	SCALE	NTS	ECR	8885
SIZE	DWG	NO		SD435LCLCC		REV	A