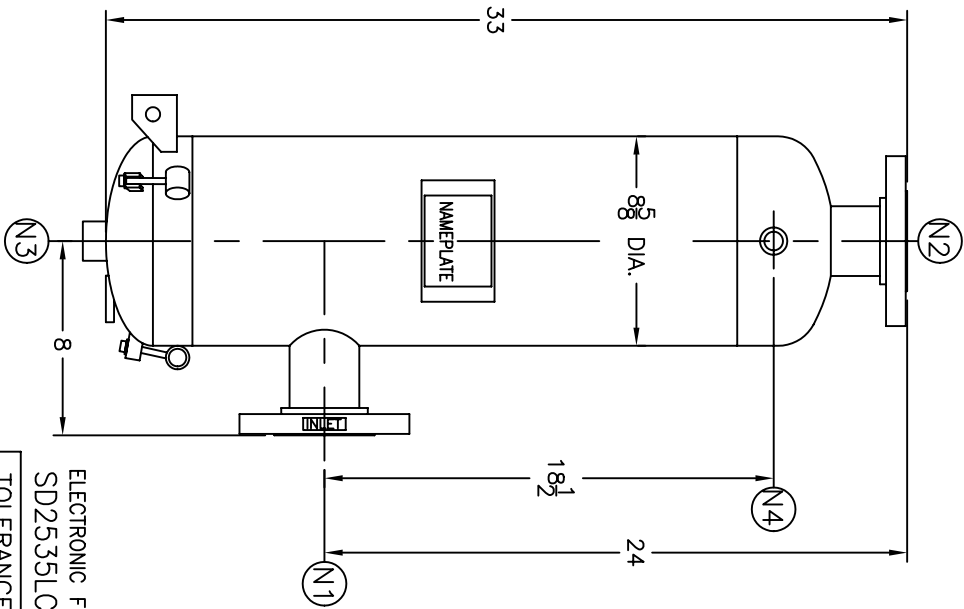


NOZZLE SCHEDULE			
ITEM	QTY.	NAME	DESCRIPTION
N1	1	INLET	2-1/2" 150# RF50 ASME B16.5 W/STD WT PIPE
N2	1	OUTLET	2-1/2" 150# RF50 ASME B16.5 W/STD WT PIPE
N3	1	DRAIN	1" NPT 3000# COUPLING
N4	1	VENT	1/2" NPT 3000# COUPLING

REV	DATE	CHANGE	ECR	BY	APP
A	3/17/05	NEW ISSUE	D025	FM	LH
B	11/1/05	REVISED TITLE BLOCK	D507	FM	LH



ELECTRONIC FILE NAME:
SD2535LCLCC.DWG

TOLERANCES UNLESS OTHERWISE SPECIFIED
PER ENGINEERING STANDARD ES- --

UNAUTHORIZED USE, MANUFACTURE OR
REPRODUCTION IN WHOLE OR IN PART IS
PROHIBITED. DRAWING, DESIGN AND
OTHER DISCLOSURES PROPERTY OF
EATON FILTRATION, LLC

NOTES:

- UNITS ARE TO BE DESIGNED, FABRICATED, UM STAMPED (IF REQUIRED) IN ACCORDANCE WITH ASME B & PV CODE, SECTION VIII, DIVISION 1 IN COMPLIANCE TO CURRENT PUBLISHED ADDENDA.
- ALL DIMENSIONS ARE IN INCHES.
- ALL BOLT HOLES ARE TO STRADDLE NATURAL CENTERLINES.
- SHIPPING WEIGHT: 150 POUNDS.
- DESIGN DATA:
DESIGN PRESSURE- 150 PSIG
DESIGN TEMPERATURE- 450° F
MIN. DESIGN METAL TEMP.- -20° F @ 150 PSIG
HYDROTEST PRESSURE- 195 PSIG
CORROSION ALLOWANCE- 0 INCHES
- MATERIAL: CARBON STEEL.
- PAINT: PER ES-317

CUSTOMER:	
REG. NO.:	
P.O. NO.:	
TAG NO.:	
PART NO.:	2.535LCLC150C, 2.535LCLC150CM

		EATON FILTRATION, LLC 900 FAIRMOUNT AVENUE, ELIZABETH, NEW JERSEY 07207	
		NAME 2-1/2" 35L-CLC GAS/LIQUID SEPARATOR 150# FLG. CSTL	

DRAWN	FM	DATE	3/17/05	CHECKED	LH	DATE	3/17/05
APP	FJM	DATE	3/17/05	SCALE	NTS	ECR	D025
SIZE	DWG	NO	SD2535LCLCC		REV	B	