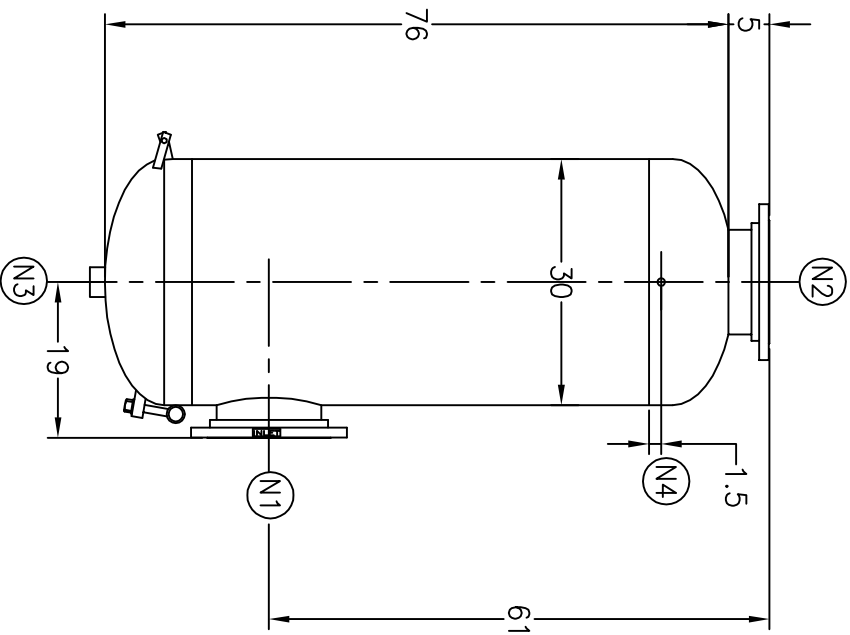


NOZZLE SCHEDULE			
ITEM	QTY.	NAME	DESCRIPTION
N1	1	INLET	12"-150# RF50 ASME B16.5
N2	1	OUTLET	12"-150# RF50 ASME B16.5
N3	1	DRAIN	2-1/2" NPT 3000# COUPLING
N4	1	VENT	1/2" NPT 3000# COUPLING



ELECTRONIC FILE NAME:
SD1235LCLC.DWG
TOLERANCES UNLESS OTHERWISE SPECIFIED
PER ENGINEERING STANDARD ES- --

UNAUTHORIZED USE, MANUFACTURE OR
REPRODUCTION IN WHOLE OR IN PART IS
PROHIBITED. DRAWING, DESIGN AND
OTHER DISCLOSURES PROPERTY OF
EATON FILTRATION, LLC

REV	DATE	CHANGE	ECR	BY	APP
A	10/4/01	NEW ISSUE	9879	GC	VH
B	11/1/05	REVISED TITLE BLOCK	D507	FM	LH

NOTES:

- UNITS ARE TO BE DESIGNED, FABRICATED, AND CODE STAMPED (IF REQ'D) IN ACCORDANCE WITH ASME B & PV CODE, SECTION VIII, DIVISION 1 IN COMPLIANCE TO CURRENT PUBLISHED ADDENDA.
- ALL DIMENSIONS ARE IN INCHES.
- ALL BOLT HOLES ARE TO STRADDLE NATURAL CENTERLINES.
- SHIPPING WEIGHT: 1100 POUNDS
- DESIGN DATA:
 - DESIGN PRESSURE- 150 PSIG
 - DESIGN TEMPERATURE- 450° F
 - MIN. DESIGN METAL TEMP- -20° F @ 150 PSIG
 - HYDROTEST PRESSURE- 195 PSIG
 - CORROSION ALLOWANCE- 0 INCHES
- RADIOGRAPHY REQUIREMENTS: NONE
- PAINT REQUIREMENTS: SEE B.O.M
- MATERIAL: CARBON STEEL

		EATON FILTRATION, LLC 900 FAIRMOUNT AVENUE, ELIZABETH, NEW JERSEY 07207					
		NAME 12" 35L-CLC GAS/LIQUID SEPARATOR 150# RF FLG. CSTL					
DRAWN	GC	DATE	10/4/01	CHECKED	FJM	DATE	10/4/01
APP	VH	DATE	10/4/01	SCALE	NTS	ECR	9879
SIZE	DWG	NO		SD1235LCLC		REV B	

CUSTOMER:
REG. NO.:
P.O. NO.:
TAG NO.:
PART NO.: 1235LCLC150C/U/M