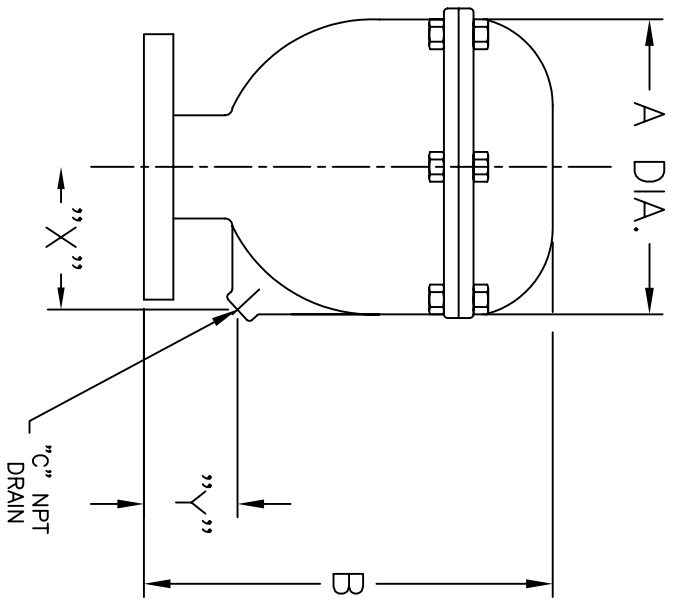


PIPE SIZE (NOMINAL) IN. MM	"A" IN. MM	"B" IN. MM	"C" IN. MM	"X" IN. MM	"Y" IN. MM	WEIGHT lbs [kg]	PART NO.
3 [80]	8.75 / 222	14.75 / 375	3/4 [20]	4.00 / 102	4.81 / 122	40 [18.2]	3.40EHCFN
4 [100]	10.00 / 254	15.00 / 381	1 [25]	4.19 / 106	4.25 / 108	68 [30.9]	4.40EHCFN
5 [125]	13.00 / 330	14.00 / 356	1-1/2 [40]	6.44 / 164	2.50 / 64	90 [40.9]	5.40EHC
6 [150]	14.75 / 375	18.75 / 476	1-1/2 [40]	7.06 / 179	3.44 / 87	115 [52.3]	6.40EHC
8 [200]	18.00 / 457	20.00 / 508	2 [50]	8.25 / 210	3.88 / 98	190 [86.4]	8.40EHC
10 [250]	23.00 / 584	24.00 / 610	2 [50]	9.56 / 243	4.50 / 114	335 [152.3]	10.40EHC



NOTES:

1. ALL DIMENSIONS ARE IN INCHES [MM].
2. ALL BOLT HOLES ARE TO STRADDLE NATURAL CENTERLINES.
3. SHIPPING WEIGHT: SEE TABLE
4. DESIGN DATA:  
 DESIGN PRESSURE- ATMOSPHERIC  
 DESIGN TEMPERATURE- AMBIENT (MAX. 450° F)  
 CORROSION ALLOWANCE- 0 INCHES  
 5. MATERIAL: CAST IRON

CUSTOMER:  
 REG NO.:  
 P.O. NO.:  
 TAG NO.:  
 PART NO.: SEE TABLE

**EATON**  
 900 FAIRMOUNT AVENUE, ELIZABETH, NEW JERSEY 07207  
**EATON FILTRATION, LLC**  
 EXHAUST HEAD (CAST IRON)  
 FLANGED SIZES 3"-10"

ELECTRONIC FILE NAME: SDEHCIF  
 REF. ECR D957 DATE 5/24/06

UNAUTHORIZED USE, MANUFACTURE OR REPRODUCTION IN WHOLE OR IN PART IS PROHIBITED. DRAWING, DESIGN AND OTHER DISCLOSURES PROPERTY OF EATON FILTRATION, LLC

DRAWN	FF	DATE	5/24/06	CERT.	FM	DATE	5/24/06	
SIZE	A	DWG NO.						
SDEHCIF							REV	F