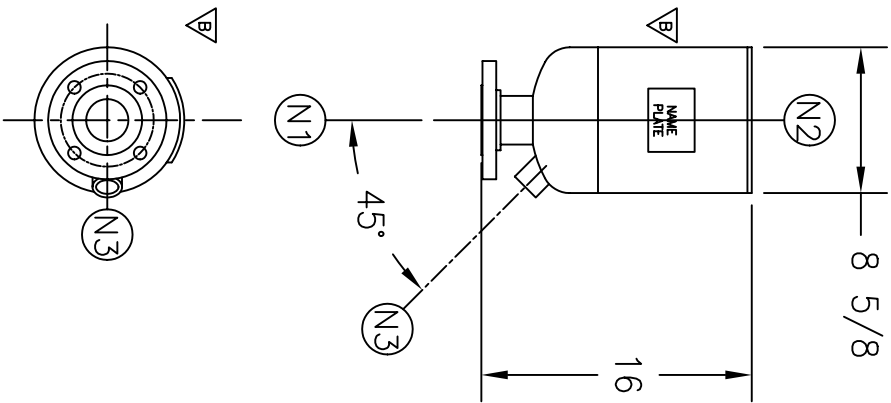


NOZZLE SCHEDULE		
ITEM	QTY.	NAME DESCRIPTION
N1	1	2" - 150# RFSO ASME B16.5
N2	1	2" STD WT PIPE
N3	1	1"-3000# HALF CPLG.

REV	DATE	CHANGE	ECR	BY	APP
A	10/26/01	NEW ISSUE	9941	GC	VH
B	12/05/03	DELETED NAMEPL. BRACKET, NAMEPL., INLET TAG, ADDED EXHAUST HEAD NAMEPL. CORRECT THE TITLE FR. 2.5" TO 2"	B892	LH	FM
C	11/1/05	REVISED TITLE BLOCK	D507	FM	LH



NOTES:

1. ALL DIMENSIONS ARE IN INCHES.
2. ALL BOLT HOLES ARE TO STRADDLE NATURAL CENTERLINES.
3. SHIPPING WEIGHT: 55 POUNDS.
4. DESIGN DATA:
DESIGN PRESSURE- ATMOSPHERIC
DESIGN TEMPERATURE- AMBIENT
CORROSION ALLOWANCE- 0 INCHES
5. MATERIAL: CARBON STEEL
6. PAINT REQUIREMENT: PER ES-317.

CUSTOMER:	EATON FILTRATION, LLC
REG. NO.:	900 FAIRMOUNT AVENUE, ELIZABETH, NEW JERSEY 07207
P.O. NO.:	2" TYPE "40-EHMF" EXHAUST
TAG NO.:	HEAD 150# FLG CSTL
PART NO.:	2EHHC

ELECTRONIC FILE NAME:
SD2EHHC.DWG

TOLERANCES UNLESS OTHERWISE SPECIFIED
PER ENGINEERING STANDARD ES- --

UNAUTHORIZED USE, MANUFACTURE OR
REPRODUCTION IN WHOLE OR IN PART IS
PROHIBITED. DRAWING, DESIGN AND
OTHER DISCLOSURES PROPERTY OF
EATON FILTRATION, LLC

EATON	NAME	2" TYPE "40-EHMF" EXHAUST			
	DATE	10/26/01	CHECKED	FJM	
DRAWN	GC	DATE	10/26/01	DATE	10/26/01
APP	FG	SCALE	1:12	ECR	9941

SIZE	DWG	REV
A	NO	C
SD2EHHC		