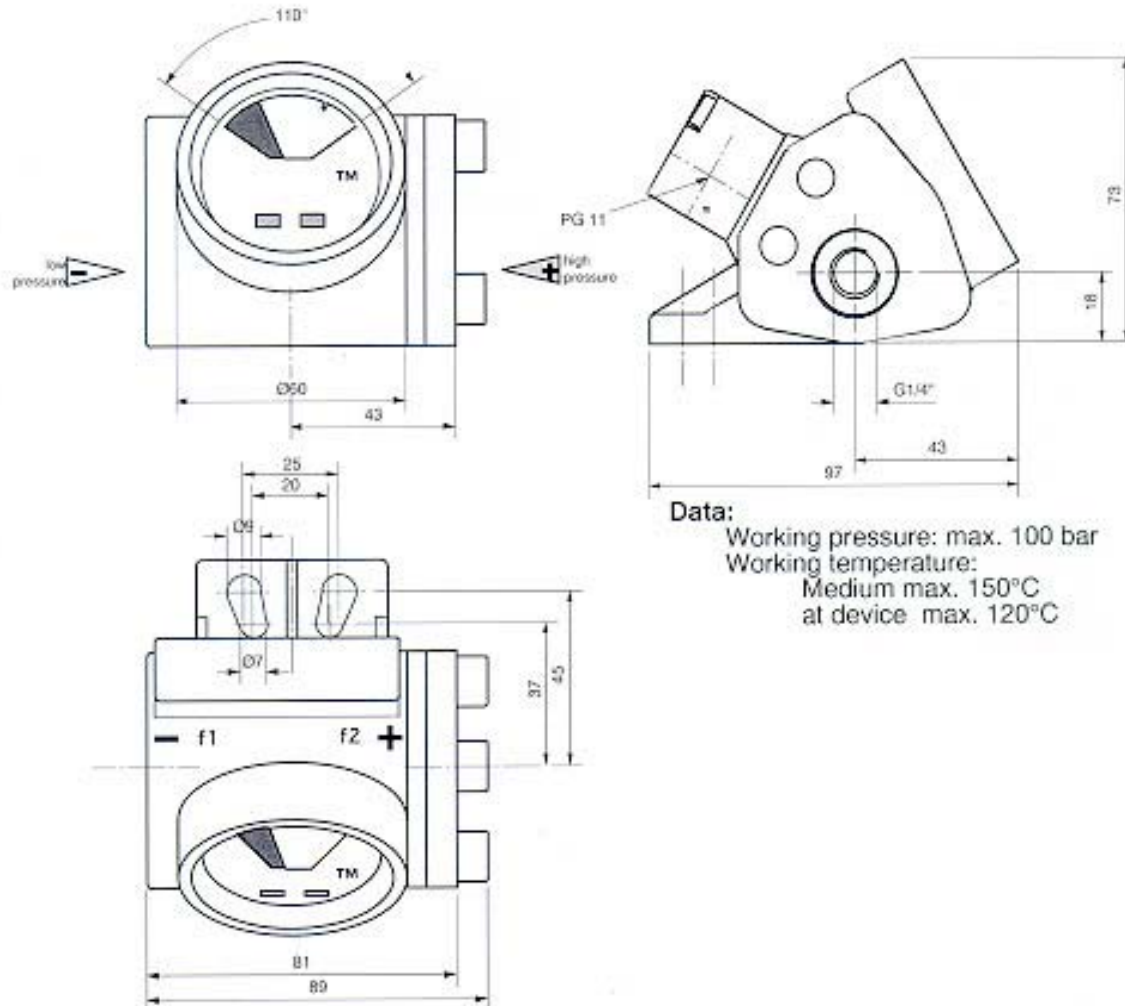


Differential pressure indicator - connection and data

Medium confronted parts made of CrNi-Steel precision casting



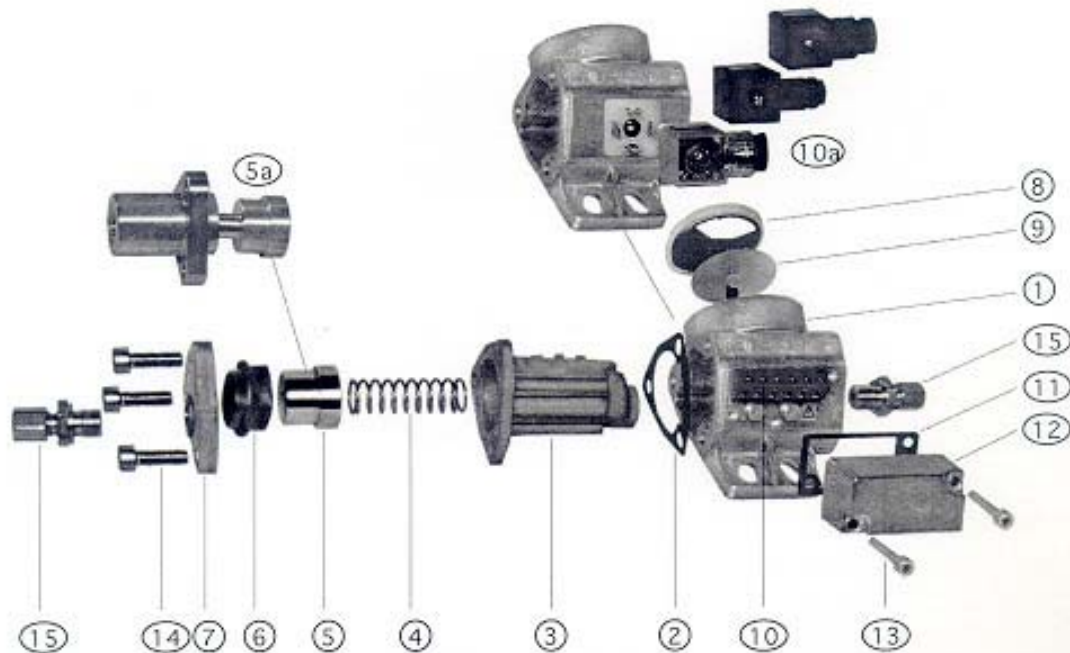
Data:

Working pressure: max. 100 bar
 Working temperature:
 Medium max. 150°C
 at device max. 120°C

- Application** The deltaP - Differential Pressure Indicators are used for the monitoring of a variable pressure difference via an optical display and electrical contacts in up to two points.
- Description** A piston, hermetically sealed, moves against the effect of a calibrated measuring spring. The piston's position is transmitted magnetically, which means without friction, to an indicating display and in addition to Reed-contacts for electrical signals. In the range of 10...100% Δp , monitored by 0... 110° display-angle, the red part of the display becomes visible. In the standard version at 75% Δp (mark in the display) usually the first (f1), at 100% Δp the second (f2) Reed-contact is switched. The switching points are engraved into the display.
- Connection** Connection should be done workmanlike, to ensure proper function. The device is prepared for G1/4" - pipe-connectors. Sealing can be done with gaskets, PTFE-Tape or glue. The low pressure is to be connected to the side marked with "-", the high pressure to the side marked with "+".
 Electrical connection: see special supplement

Differential pressure indicator - connection and data

Medium confronted parts made of CrNi-Steel precision casting



Nr.	Bezeichnung	Material / Bezeichnung	optional
1	Casing	GK AISI 12	
2	Gasket for casing		
3	Cylinder	CrNi precision-cast, W.St.-Nr. 1.4450	
4	Measuring spring	W.St.-Nr. 1.4310	
5	Piston with ring-magnet	CrNi-Stahl W.St.-Nr. 1.4435, Bariumferrit	Special materials Sonderwerkstoffe
5a	High-pressure-	CrNi-steel, W.St.-Nr. 1.4435	
6	Rolling diaphragm	Perbunan	Viton, EP
7	Cover	CrNi precision-cast, W.St.-Nr. 1.4450	
8	Display	Polycarbonat (Makrolon)	
9	Display disc (red/blue) with magnet	Al, Ms, Bariumferrit	
10	Clamp	Plastics, Ms (tin surface)	Plug systems
0a	Plugs	DIN 43650	others on request
11	Gasket for cover	Perbunan	
12	Cover	GK AISI 12	
13	Screw	DIN 912 M5x25 A2, CrNi-steel	
14	Screw	DIN 912 M8x25 A2 CrNi-steel	
15	G 1/4" pipe connector	CrNi-steel, W.St.-Nr. 1.4571	

Maintenance deltaP - Differential pressure indicators generally need no maintenance.

Though the rolling diaphragm can be damaged because of aging or very high differential pressure loads.



If the rolling diaphragm or the gasket is damaged the differential pressure can't be monitored correctly!

Herewith it can come because of the narrow fit size to an only slight by-pass flow through the inside of the indicator. However the instrument interior can pollute thereby. If constant differential pressure should be indicated during an unusually long time it is advisable to check the instrument interior for pollution and especially to check the rolling diaphragm or gasket for damages. If necessary the instruments interior and the connection pipings are to be cleaned and the gaskets changed. When installing the rolling diaphragm it is to be paid attention of fitting the nipples in the bottom of the diaphragm to the piston's side.

Differential pressure indicator - connection and data

Medium confronted parts made of CrNi-Steel precision casting

CIRCUIT DIAGRAM:



ATTENTION:



Electrical connection of the Differential pressure indicator is to be done by specialists (e.g. electricians) to prevent damages. In any case the connection cables are to be separated from mains supply before.

CABLE PREPARATION:

Before connection prepare the cable ends with tin or cable end sleeves.

CONTACTS:

The contacts are switched according to the above-mentioned circuit diagram. The respective differential pressure, engraved into the display (Δp_1 , Δp_2) controls the contacts (f1, f2). Each contact is associated with a clamp on the reverse of the differential pressure indicator. This is protected with a sealed aluminum cover.

The clamp description is found on the the plate and on the upper side of the casing.

Connection to earth can be either made via the clamps or the brass-screws which hold the plate. At loss of these screws they are absolutely to replace, because they serve simultaneously as fastening bolts for the plate.

CONNECTION:

Before connection to the clamps, the cable must be led through any kind of PG-11 cable screw, the aluminum cover and it's gasket. Subsequently the cables can be connected according to the above-mentioned circuit diagram. The max. tightening moment is 2Nm.

Finally the aluminum cover is to be screwed with the casing.



Electrical Data:

Contact		f1	f2
switching ability	max. W	120	30
switching ability	max. VA	120	60
switching voltage	max. V \equiv	250	250
switching current	max. A	3	1
constant current	max. A	5	2
Voltage-proof up to	V	800	500
volume resistance	max. m Ω	100	100
isolation resistance	typ. Ω	10 ¹¹	10 ⁹
cable diameter	max. mm ²	1,5	1,5

high-voltage-tested against earth up to 1350 VAC
Isolation protection class IP 65