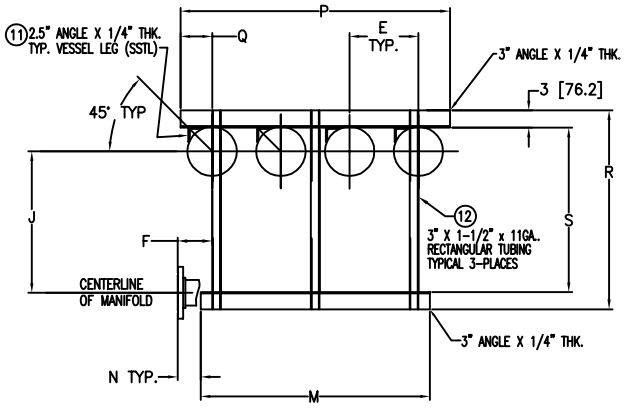
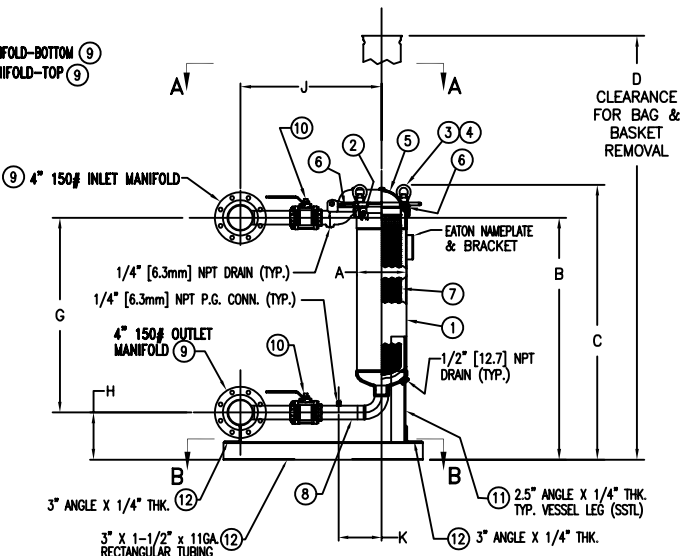
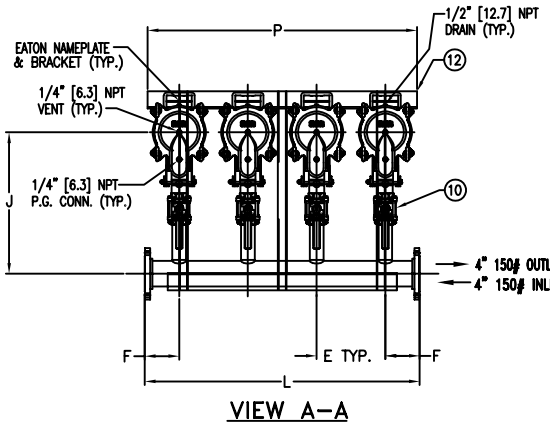


ITEM NUMBER	BAG SIZE	A	B	C	D	E	F	G	H	J	K	L	M	N	P	Q	R	S	WEIGHT
		IN. / MM	IN. / MM	IN. / MM	IN. / MM	IN. / MM	IN. / MM	IN. / MM	IN. / MM	IN. / MM	IN. / MM	IN. / MM	IN. / MM	IN. / MM	IN. / MM	IN. / MM	IN. / MM	IN. / MM	LBS / KGS
F3AVTBO404	O2	8-5/8 / 219	42-1/4 / 1073	48 / 1219.2	74 / 1879.6	12 / 305	6 / 152.4	34 / 864	8-1/4 / 2.9.8	24-11/16 / 627	7-1/2 / 190.5	48 / 1219	40 / 1016	4 / 101.6	47 / 1194	5-1/2 / 140	34-3/4 / 882	28-3/4 730	630 / 285

R E V I S I O N S				
REV	DESCRIPTION	BY	ECO	DATE
A	NEW ISSUE	FJM	0030160	06/21/10
B	REVISED FROM 6" TO 4"	FJM	0089225	09/05/13
C	UPDATED DRAWING	FJM	0107180	02/03/15

NO.	PART NAME	MATERIAL
1	BODY	SA-351 CF8M SA-312 TP 316
2	PIN	SA-193 GR B7, ZINC PL
3	EYE BOLT	SA-193 GR B7, ZINC PL
4	EYE NUT	SA-194 GR 2H, ZINC PL
5	COVER	SA-351 CF8M
6	O-RINGS (2) (1) 811333 SMALL (1) L0000024 LARGE	BUNA-N
7	RESTRAINER BASKET P/N L0001753	316 STAINLESS STEEL
8	2" ELBOW ASSEMBLY	316 STAINLESS STEEL
9	4" 150# MANIFOLDS	316 STAINLESS STEEL
10	2" 150# BALL VALVE	SEE NOTE 6
11	VESSEL ANGLE LEG SUPPORT	STAINLESS STEEL
12	SKID ASSEMBLY	STAINLESS STEEL

- NOTES:
- VESSEL DESIGNED, CONSTRUCTED, & "UM" STAMPED IN ACCORDANCE WITH ASME SECT. VIII, DIV. 1 LATEST EDITION AND ADDENDA.
 - MANIFOLD INLET/OUTLET FLANGED CONNECTIONS PER ANSI B16.5
 - MAWP: 150 PSI @ 250° F MDMT: -20° F @ 150 PSI (-28.9° C @ 10.3 BAR)
 - INTER-CONNECTING VALVE HARDWARE WILL BE SUPPLIED.
 - DIMENSIONS SHOWN IN [] ARE IN MILLIMETERS AND FOR REFERENCE ONLY. ACCEPTANCE OF THIS PART WILL BE BASED ON "INCH" UNITS & TOLERANCES ONLY.
 - 2" SOCKET WELD BALL VALVES STAINLESS STEEL EATON STANDARD P/N RPV0000018 & RPV0000019 FULL PORT 3 PIECE.



CUSTOMER INFO		TOLERANCES (UNLESS OTHERWISE SPECIFIED)	DRAWN BY	HYDRAULICS GROUP	
NAME		DECIMAL: X ± .030 XX ± .010 XXX ± .005	FJM	FILTRATION DIVISION GALESBURG, MICHIGAN, USA • TINTON FALLS, NEW JERSEY, USA	
P.O. NO.		FRACTIONAL: NOZZLE & TO FLOOR: $\frac{1}{2}$ < 4 > $\frac{3}{4}$ FACE TO FACE: $\frac{1}{2}$ < 4 > $\frac{3}{4}$ ANGULAR: $\frac{1}{2}$ < 1 > $\frac{3}{4}$ FLANGES (H/V): VESSEL OVERALL HT: $\frac{1}{2}$ < 1 > $\frac{3}{4}$	SCALE AS DRAWN	TITLE MODULINE TOPLINE (MTBF-0402) FILTER VESSEL 4"-150# IN/OUT FLANGE MANIFOLD MATERIAL SS-316 W/BALL VALVES	
S.O. NO.		BOLT HOLES MUST STRADDLE & MACHINED PARTS TO BE FREE OF BURRS FOR ADDITIONAL TOLERANCE DETAILS REF. ES-211, ES-222 AND ES-223 REWORKED FOR CLASSIFICATION PER PR-4	RESTRICTION RESTRICTED	SHEET 1 OF 1	
QUANTITY		CRITICAL SIGNIFICANT	PROJECTION THIRD ANGLE	DATE 04/27/09	SIZE B
PART NO.	F3AVTBO404			DWG FILENAME MTBF04XS	REV C