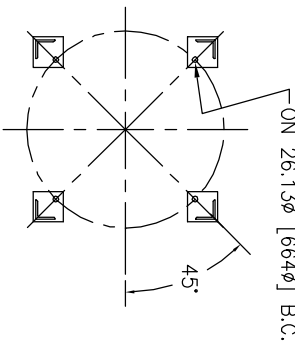


SECTION A-A



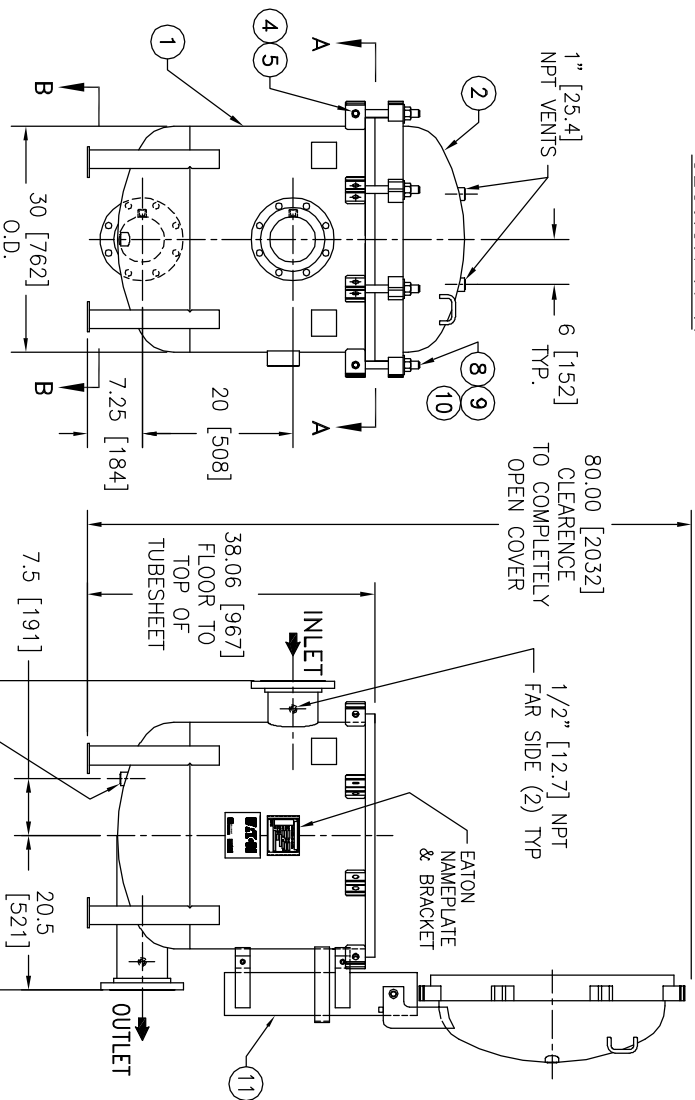
SECTION B-B

(4) 3/4" ϕ [19.0] BOLT HOLES
LOCATED AS SHOWN
ON 26.13 ϕ [66.4 ϕ] B.C.

ITEM	PART NAME	MATERIAL
1	BODY	SA516 GR. 70
2	COVER	SA516 GR. 70
3	O-RING	BUNA-N
4	PIN	SA193 B7 ZINC PL
5	SNAP RING	STEEL ZINC PL
6	RESTRAINER BASKET	304 SS
7	FILTER BAG RETAINER	316 SS
8	EYE BOLT	SA193 B7 ZINC PL
9	HEX NUT	SA194 2H ZINC PL
10	WASHER	STEEL ZINC PL
11	SPRING ASSISSED MECHANISM	STAINLESS STEEL

NOTES:

1. UNITS ARE TO BE DESIGNED, FABRICATED & "U" STAMPED IN ACCORDANCE WITH ASME SECT VIII, DIV. 1 BOILER & PRESSURE VESSEL CODE, IN COMPLIANCE TO LATEST ADDENDA.
2. INLET / OUTLET FLANGE CONNECTIONS PER ANSI B 16.5.
3. DESIGN PRESSURE: 150 PSI (MAMP)
DESIGN TEMPERATURE 250° F.
MDMT - -20° F @ 150 PSI.
4. ALL DIMENSIONS ARE IN INCHES / (MM).
5. ALL BOLT HOLES ARE TO STRADDLE NATURAL CENTERLINES.
6. APPROX. WEIGHT (DRY) 945 LB. (428 kgs.)
7. APPROX. SHIPPING WEIGHT 1075 LB. (487 kgs.)
8. PAINT C/STL. PER EATON STANDARD ES-301.



1" [25.4]
NPT DRAIN

UNAUTHORIZED USE, MANUFACTURE OR
REPRODUCTION IN WHOLE OR IN PART IS
PROHIBITED. DRAWING, DESIGN AND
OTHER DISCLOSURES PROPERTY OF
EATON FILTRATION, LLC



EATON FILTRATION, LLC
900 FAIRMOUNT AVENUE, ELIZABETH, NEW JERSEY 07207
NAME MAXILINE MBF0802HE FILTER VESSEL
6" 150# Rf INLET / TANGENTIAL OUTLET
CARBON STEEL

CERTIFIED FOR:
P.O. NO.:
SALES ORDER NO.:
QUOTE NO.:
TAG NO.:
VESSEL CODE: MBF-0802-CS10-060A-UT-13HE
PART NUMBER: F3AV0800101

ELECTRONIC FILE NAME: HE0806TC.F.DWG
REF. EGR 0800148 DATE 07/01/08

DATE	DATE	DATE	REV
07/27/01	07/27/01	07/27/01	F