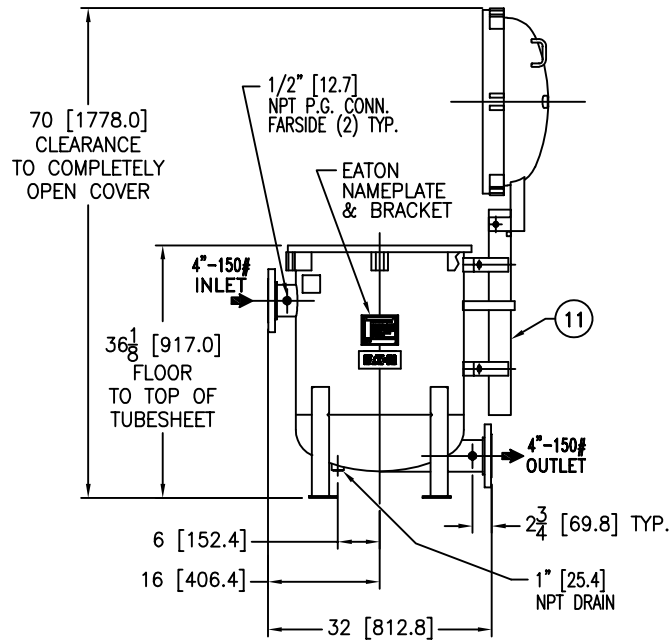
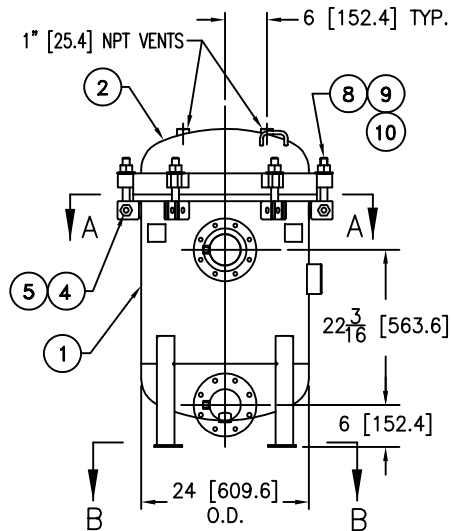
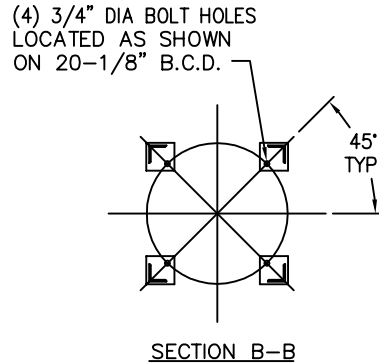
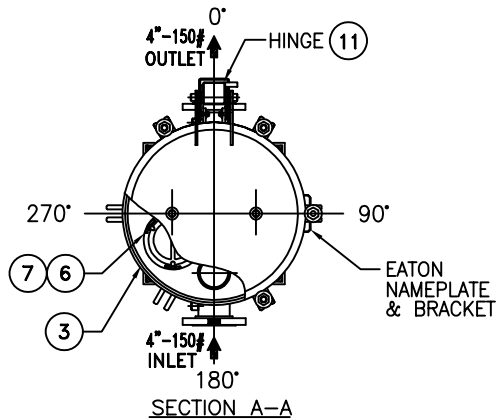


| REVISIONS |                       |     |         |          |
|-----------|-----------------------|-----|---------|----------|
| REV       | DESCRIPTION           | BY  | ECO     | DATE     |
| D         | UPDATE DRAWING NOTE 1 | FJM | 0123426 | 05/25/16 |



| ITEM | PART NAME                      | MATERIAL         |
|------|--------------------------------|------------------|
| 1    | BODY                           | SA240-304/304L   |
| 2    | COVER                          | SA240-304/304L   |
| 3    | O-RING P/N 2375035093          | BUNA-N           |
| 4    | PIN                            | SA193 B7 ZINC PL |
| 5    | SNAP RING                      | STEEL ZINC PL    |
| 6    | BASKET RESTRAINER P/N L0001753 | 316 SS           |
| 7    | FILTER BAG RETAINER            | 316 SS           |
| 8    | EYE BOLT                       | SA193 B7 ZINC PL |
| 9    | HEX NUT                        | SA194 2H ZINC PL |
| 10   | WASHER                         | STEEL ZINC PL    |
| 11   | SPRING ASSISTED MECHANISM      | STAINLESS STEEL  |

**NOTES:**

- UNITS ARE DESIGNED, FABRICATED AND "U" STAMPED IN ACCORDANCE WITH THE ASME BOILER & PRESSURE VESSEL CODE SECTION VIII, DIVISION 1, IN COMPLIANCE TO CURRENT MANDATORY EDITION.
- INLET / OUTLET FLANGE CONNECTIONS PER ANSI B 16.5.
- DESIGN PRESSURE: 150 PSI (MAWP)  
DESIGN TEMPERATURE 250° F.  
MDMT - -20° F @ 150 PSI.
- ALL DIMENSIONS ARE IN INCHES / (MM).
- ALL BOLT HOLES ARE TO STRADDLE NATURAL CENTERLINES.
- APPROX. WEIGHT (DRY) 615 LB. (278 kgs)
- APPROX. SHIPPING WEIGHT 735 LBS. (333 kgs)

VESSEL CODE: MBF-0402-BB10-040A-UT-11HE

| TOLERANCES (UNLESS OTHERWISE SPECIFIED) |  |
|---|--|
| DECIMAL:                                | .X ± .030<br>.XX ± .010<br>.XXX ± .005 |
| FRACTIONAL:                             | ± 1/16                                 |
| NOZZLE C TO FLOOR:                      | 1/8" < 4' > 1/4"                       |
| FACE TO FACE:                           | 1/8" < 4' > 1/4"                       |
| ANGULAR:                                | ± 1'                                   |
| FLANGES (H/V):                          | ± 1/2"                                 |
| VESSEL OVERALL HT:                      | 1"                                     |

BOLT HOLES MUST STRADDLE C MACHINED PARTS TO BE FREE OF BURRS FOR ADDITIONAL TOLERANCE DETAILS REF. ES-211, ES-222 AND ES-223

REVIEWED FOR CLASSIFICATION PER PR-4

CRITICAL SIGNIFICANT

| CUSTOMER INFO |                 |
|---------------|-----------------|
| NAME          |                 |
| P.O. NO.      |                 |
| S.O. NO.      |                 |
| QUANTITY      |                 |
| PART NO.      | F3AV0400001-304 |

|             |             |
|-------------|-------------|
| DRAWN BY    | FJM         |
| SCALE       | AS DRAWN    |
| RESTRICTION | RESTRICTION |
| SHEET       | 1 OF 1      |
| PROJECTION  | THIRD ANGLE |

|              |          |  |              |
|--------------|----------|--|--------------|
|              |          | HYDRAULICS GROUP<br>FILTRATION DIVISION<br>GALESBURG, MICHIGAN, USA • TINTON FALLS, NEW JERSEY, USA            |              |
| <b>TITLE</b> |          | MAXILINE (MBF-0402HE) FILTER VESSEL<br>4" 150# RF INLET/TANGENTIAL OUTLET<br>STAINLESS STEEL-304 W/BUNA O-RING |              |
| DATE         | 04/01/06 | SIZE   | DWG FILENAME |
|              |          |  | HE0404TS-304 |
| REV          | D        |  |              |

EATON CORPORATION - CONFIDENTIAL AND PROPRIETARY NOTICE TO PERSONS RECEIVING THIS DRAWING AND/OR TECHNICAL INFORMATION: THIS DOCUMENT, INCLUDING THE DRAWING AND INFORMATION CONTAINED THEREON IS CONFIDENTIAL AND IS THE EXCLUSIVE PROPERTY OF EATON AT ANY TIME. BY TAKING THE POSSESSION OF THIS DOCUMENT THE RECIPIENT ACKNOWLEDGES AND AGREES THAT THIS DOCUMENT CANNOT BE USED IN ANY MANNER ADVERSE TO THE INTEREST OF EATON AND THAT NO PORTION OF THIS DRAWING MAY BE COPIED OR OTHERWISE REPRODUCED WITHOUT THE PRIOR WRITTEN CONSENT OF EATON, IN THE CASE OF CONFLICT CONTRACTUAL PROVISIONS, THIS NOTICE SHALL GOVERN THE STATUS OF THIS DOCUMENT. 2016 EATON CORPORATION - ALL RIGHTS RESERVED.