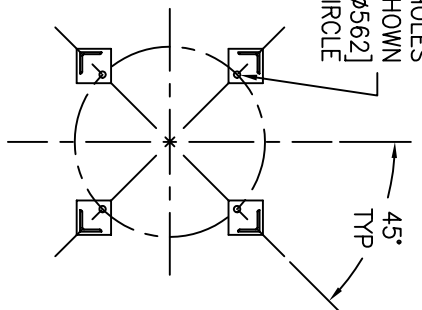


(4) $\phi 3/4$ [$\phi 19$] BOLT HOLES
LOCATED AS SHOWN
ON $\phi 22.13$ [$\phi 562$]
BOLT CIRCLE



FOOT PAD
ARRANGEMENT

ITEM	PART NAME	MATERIAL
1	BODY	SA516 GR. 70
2	COVER	SA516 GR. 70
3	O-RING	BUNA-N
4	PIN	SA193 B7 ZINC PL
5	SNAP RING	STEEL ZINC PL
6	BASKET RESTRAINER	316 SS
7	FILTER BAG RETAINER	316 SS
8	EYE BOLT	SA193 B7 ZINC PL
9	HEX NUT	SA194 2H ZINC PL
10	WASHER	STEEL ZINC PL
11	SPRING ASSISTED MECHANISM	STAINLESS STEEL

NOTES:

- UNITS ARE TO BE DESIGNED, FABRICATED & "U" STAMPED IN ACCORDANCE WITH ASME SECTION VIII, DIV. 1, BOILER & PRESSURE VESSEL CODE, IN COMPLIANCE TO LATEST ADDENDA.
- INLET / OUTLET FLANGE CONNECTIONS PER ANSI B16.5.
- DESIGN PRESSURE: 150 PSI (MAMP) [10.34 BAR]
DESIGN TEMPERATURE: 250° F [121°C]
MDMT: -20° F @ 150 PSI [28.9°C @ 10.34 BAR]
- ALL DIMENSIONS ARE IN INCHES [MM].
- ALL BOLT HOLES ARE TO STRADDLE NATURAL CENTERLINES.
- APPROX. WEIGHT (DRY) 790 LB. (358 kgs.)
- APPROX. SHIPPING WEIGHT 915 LB. (415 kgs.)
- PAINT PER HAYWARD STANDARD ES-301.

CERTIFIED FOR:

P.O. NO.:
REG. NO.:
QUOTE NO.:
TAG NO.:
VESSEL CODE: MBF-0602-CS10-040A-UT-13HE
PART NUMBER: F3AV0600103



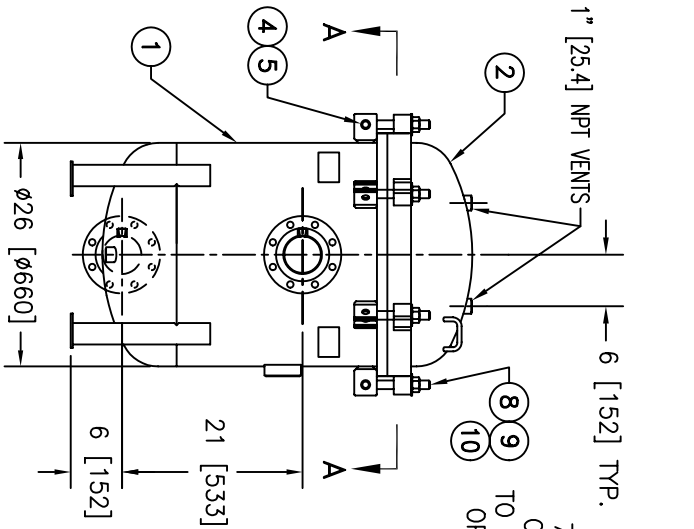
EATON FILTRATION, LLC

900 FAIRMOUNT AVENUE, ELIZABETH, NEW JERSEY 07207

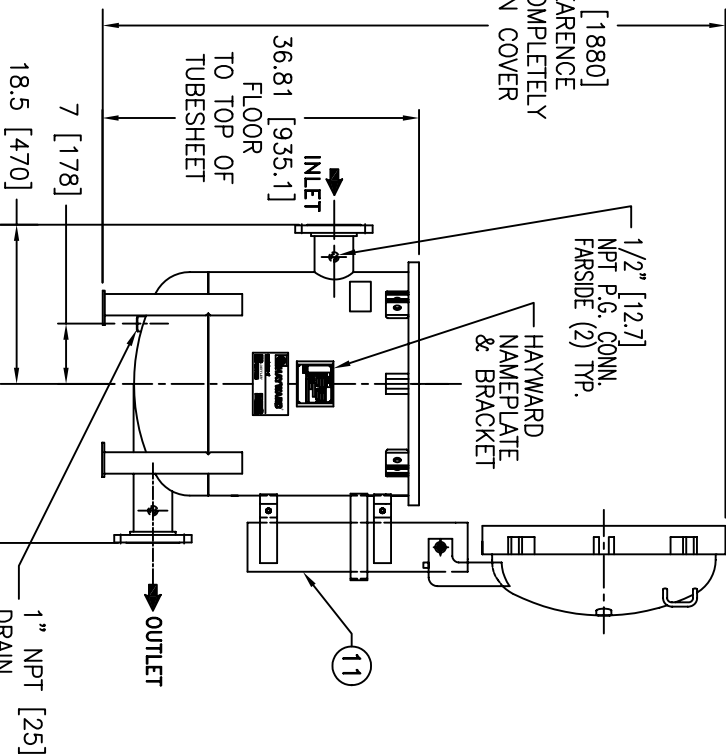
NAME: MAXILINE MBF0602HE FILTER VESSEL
4" 150# RF INLET / TANGENTIAL OUTLET
CARBON STEEL

DATE	BY	DATE	REV
07/27/01	VH	07/27/01	D

HE0604TC



74 [1880]
CLEARANCE
TO COMPLETELY
OPEN COVER



1" NPT [25]
DRAIN

ELECTRONIC FILE NAME: HE0604TC.DWG
REF. ECR D652 DATE 01/06/06

UNAUTHORIZED USE, MANUFACTURE OR REPRODUCTION IN WHOLE OR IN PART IS PROHIBITED. DRAWING, DESIGN AND OTHER DISCLOSURES PROPERTY OF EATON FILTRATION, LLC