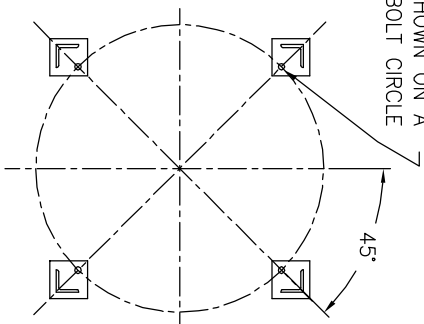
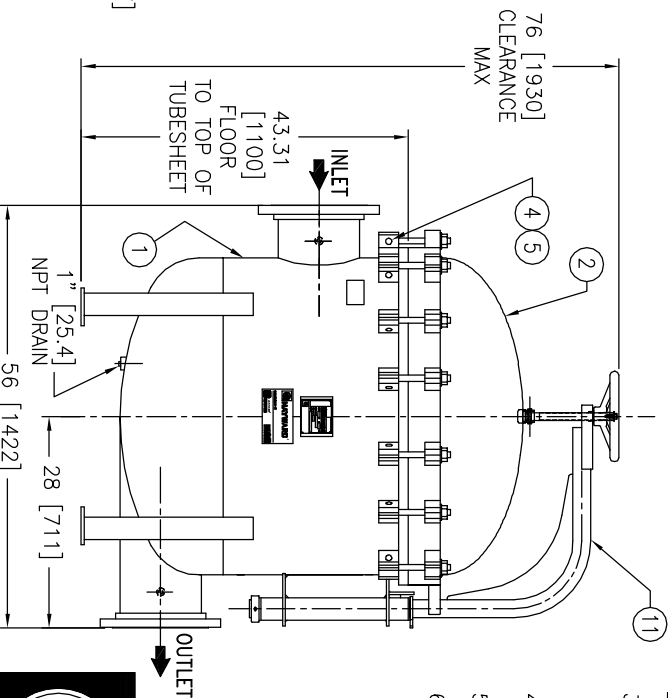
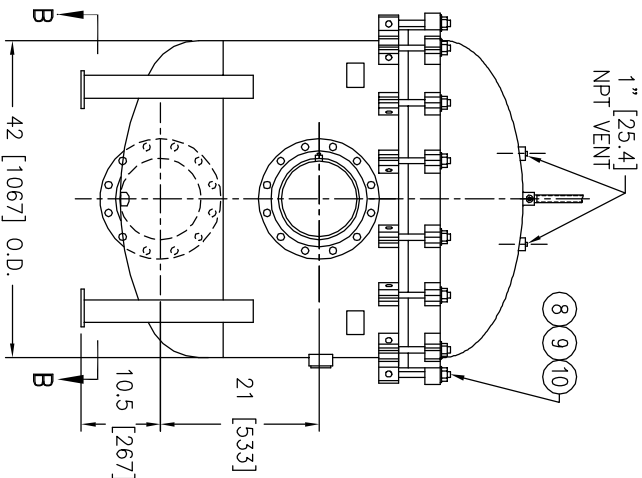


(4) 7/8"Ø [22Ø] BOLT HOLES
LOCATED AS SHOWN ON A
38.13Ø [969Ø] BOLT CIRCLE



SECTION B-B



ITEM	PART NAME	MATERIAL
1	BODY	SA516 GR 70
2	COVER	SA516 GR 70
3	O-RING	BUNA-N
4	PIN	SA193 B7 ZINC PL
5	SNAP RING	STEEL ZINC PL
6	BASKET RESTRAINER	316 SS
7	FILTER BAG RETAINER	316 SS
8	EYE BOLT	SA193 B7 ZINC PL
9	HEX NUT	SA194 2H ZINC PL
10	WASHER	STEEL ZINC PL
11	DAVIT ASSEMBLY	CARBON STEEL

NOTES:

- UNITS ARE TO BE DESIGNED, FABRICATED & "U" STAMPED IN ACCORDANCE WITH ASME SECT. VIII, DIV. 1 BOILER & PRESSURE VESSEL CODE, IN COMPLIANCE TO LATEST ADDENDA.
- INLET / OUTLET FLANGE CONNECTIONS PER ANSI B 16.5.
- DESIGN PRESSURE: 150 PSI (MAMP)
DESIGN TEMPERATURE 250° F.
MDMT -- -20° F @ 150 PSI.
- ALL DIMENSIONS ARE IN INCHES / (MM).
- ALL BOLT HOLES ARE TO STRADDLE NATURAL CENTERLINES.
- APPROX. WEIGHT (DRY) 1825 LB. (827 KG.)

CERTIFIED FOR:
P.O. NO.:
REG. NO.:
QUOTE NO.:
TAG NO.:
VESSEL CODE: MBF-1602-CS10-100A-UT-13HD
HAYWARD PART NO.: F3AV1600100



HAYWARD INDUSTRIAL PRODUCTS, INC.
Manufactures of LOEFFLER Filtration & G&G Filter Systems
900 FARMOUNT AVENUE, ELIZABETH, NEW JERSEY 07207

NAME MAXILINE MBF1602HD FILTER VESSEL
10 150# Rf INLET / TANGENTIAL OUTLET
CARBON STEEL

SIZE	DWG NO	DATE	CERT.	LH	DATE	REV
A	HD1610TC	02/07/02			02/07/02	B

GAF and the GAF logo are registered trademarks of GAF Corporation in the United States, and are used under license.
REV 8/00

ELECTRONIC FILE NAME: HD1610TC.DWG
REF: EGR B918 DATE 12/03/03

UNAUTHORIZED USE, MANUFACTURE OR REPRODUCTION IN WHOLE OR IN PART IS PROHIBITED. DRAWING, DESIGN AND OTHER DISCLOSURES PROPERTY OF HAYWARD INDUSTRIAL PRODUCTS, INC.