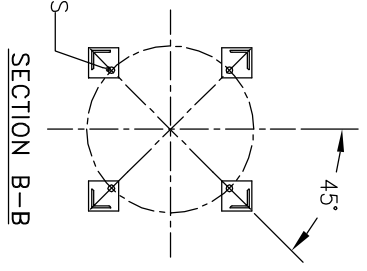


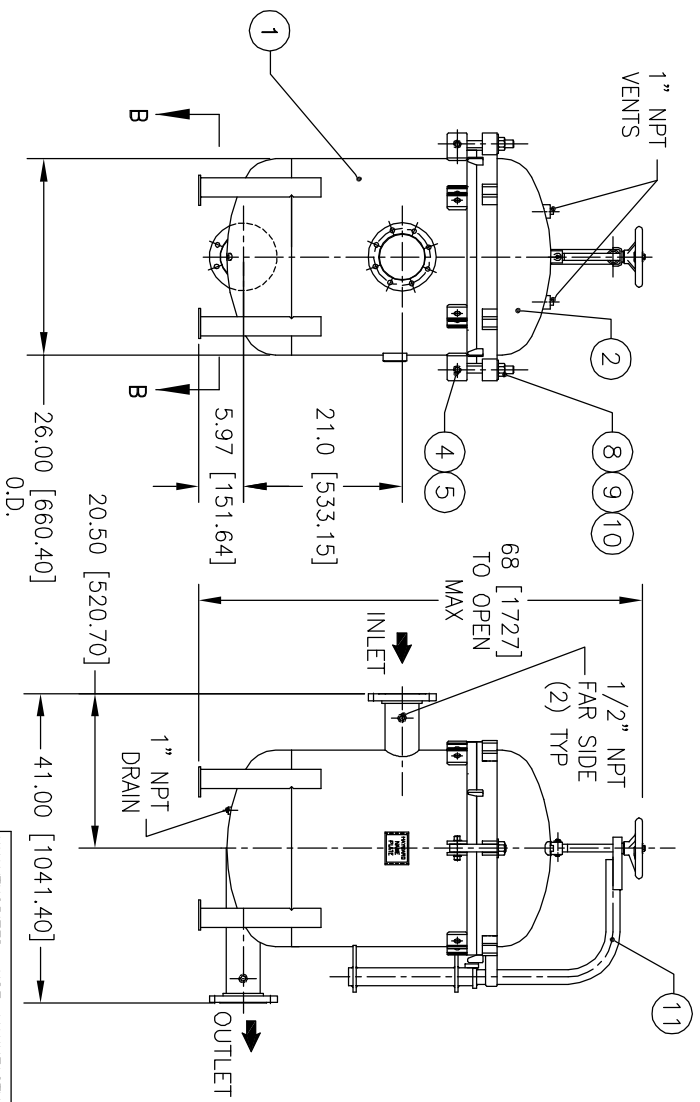
(4) 3/4"Ø [19Ø] BOLT HOLES  
LOCATED AS SHOWN  
ON 22.13Ø [562Ø] B.C.



ITEM	PART NAME	MATERIAL
1	BODY	SA240 316/316L
2	COVER	SA240 316/316L
3	O-RING	BUNA-N
4	PIN	SA193 B7 ZINC PL
5	SNAP RING	STEEL ZINC PL
6	BASKET RESTRAINER	316 SS
7	FILTER BAG RETAINER	316 SS
8	EYE BOLT	SA193 B7 ZINC PL
9	HEX NUT	SA194 2H ZINC PL
10	WASHER	STEEL ZINC PL
11	DAVIS ASSEMBLY	CARBON STEEL

**NOTES:**

1. UNITS ARE TO BE DESIGNED, FABRICATED & "U" STAMPED IN ACCORDANCE WITH ASME SECT. VIII, DIV. 1 BOILER & PRESSURE VESSEL CODE, IN COMPLIANCE TO LATEST ADDENDA.
2. INLET / OUTLET FLANGE CONNECTIONS PER ANSI B 16.5.
3. DESIGN PRESSURE: 150 PSI (MAMP)  
DESIGN TEMPERATURE 250° F.  
MDMT: -20° F @ 150 PSI.
4. ALL DIMENSIONS ARE IN INCHES / (MM).
5. ALL BOLT HOLES ARE TO STRADDLE NATURAL CENTERLINES.
6. APPROX. WEIGHT (DRY) 460 LB. (209 KG.)



CERTIFIED FOR:  
P.O. NO.:  
REG. NO.:  
QUOTE NO.:  
TAG NO.:  
VESSEL CODE: MBF-0602-AB10-040A-UT-11HD  
HAYWARD PART NO.: F3AV0600100



**HAYWARD INDUSTRIAL PRODUCTS, INC.**  
Manufacturers of LOEFFLER FILTRATION & GAF® FILTER SYSTEMS  
900 FARMOUNT AVENUE, ELIZABETH, NEW JERSEY 07207

NAME: MAXILINE MBF0602HD FILTER VESSEL  
4" 150# RF INLET/TANGENTIAL OUTLET  
STAINLESS STEEL

UNAUTHORIZED USE, MANUFACTURE OR REPRODUCTION IN WHOLE OR IN PART IS PROHIBITED. DRAWING, DESIGN AND OTHER DISCLOSURES PROPERTY OF HAYWARD INDUSTRIAL PRODUCTS, INC.

SIZE	DWG NO	DATE	REV
A	HD0604TS	12/29/00	1/2/01

ELECTRONIC FILE NAME: HD0604TS.DWG  
REF. EGR 9520  
DATE 06/07/01

GAF and the GAF logo are registered trademarks of GAF Corporation in the United States, and are used under license.  
REV 8/00