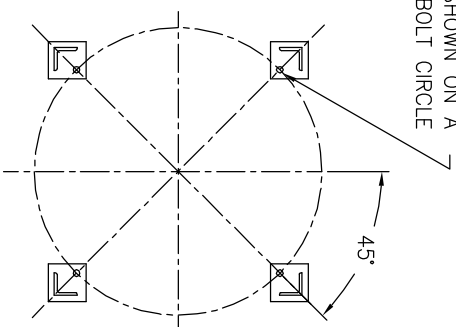


(4) 7/8"φ [22φ] BOLT HOLES  
LOCATED AS SHOWN ON A  
38.13φ [969φ] BOLT CIRCLE

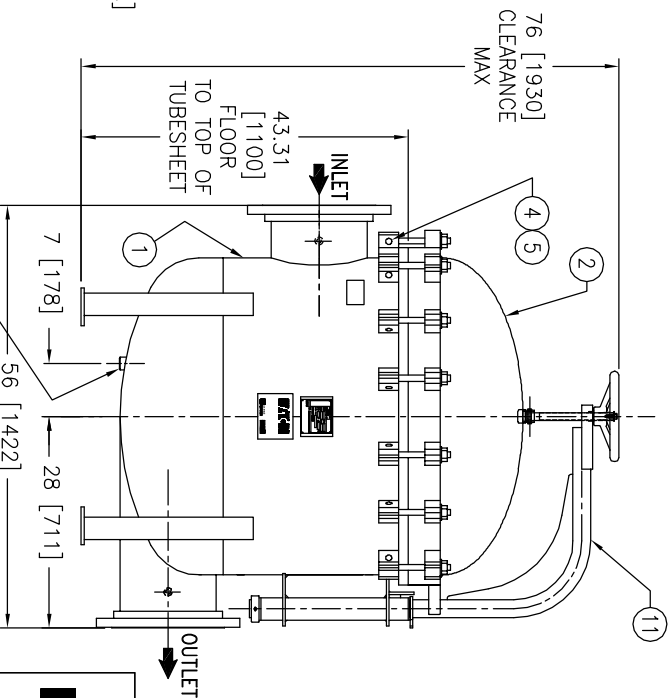
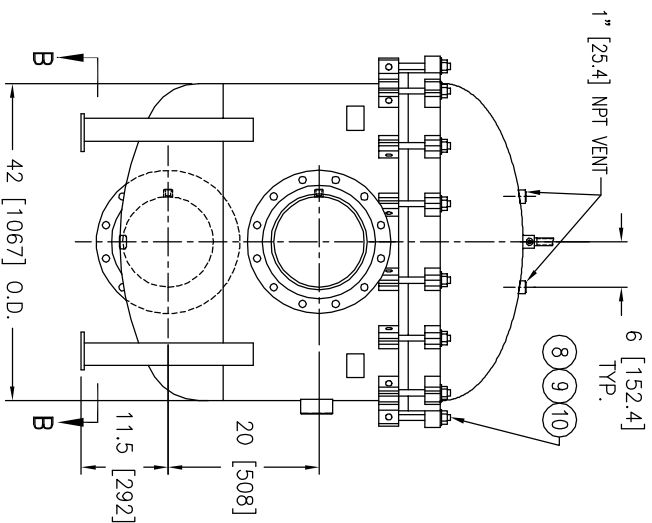


SECTION B-B

ITEM	PART NAME	MATERIAL
1	BODY	SA240 316/316L
2	COVER	SA240 316/316L
3	O-RING	BUNA-N
4	PIN	SA193 B7 ZINC PL
5	SNAP RING	STEEL ZINC PL
6	BASKET RESTRAINER	316 SS
7	FILTER BAG RETAINER	316 SS
8	EYE BOLT	SA193 B7 ZINC PL
9	HEX NUT	SA194 2H ZINC PL
10	WASHER	STEEL ZINC PL
11	DAVIT ASSEMBLY	CARBON STEEL

**NOTES:**

1. UNITS ARE TO BE DESIGNED, FABRICATED & "U" STAMPED IN ACCORDANCE WITH ASME SECT. VIII, DIV. 1 BOILER & PRESSURE VESSEL CODE, IN COMPLIANCE TO LATEST ADDENDA.
2. INLET / OUTLET FLANGE CONNECTIONS PER ANSI B 16.5.
3. DESIGN PRESSURE: 150 PSI (MAMP)  
DESIGN TEMPERATURE 250° F.  
MDMT - -20° F @ 150 PSI.
4. ALL DIMENSIONS ARE IN INCHES / (MM).
5. ALL BOLT HOLES ARE TO STRADDLE NATURAL CENTERLINES.
6. APPROX. WEIGHT (DRY) 1875 LB. (850 KG.)



CERTIFIED FOR:  
P.O. NO.:  
SALES ORDER NO.:  
QUOTE NO.:  
TAG NO.:  
VESSEL CODE: MBF-1602-AB10-120A-UT-11HD  
PART NUMBER: F3AV16000003

**EATON**  
900 FAIRMOUNT AVENUE, ELIZABETH, NEW JERSEY 07207  
**EATON FILTRATION, LLC**  
NAME: MAXILINE MBF1602HD FILTER VESSEL  
12" 150# RF INLET / TANGENTIAL OUTLET  
STAINLESS STEEL

DRAWN	DATE	CERT.	LF	DATE	REV
VA	11/21/00			1/24/01	D

SIZE: A  
DWG NO: HD1612TS

UNAUTHORIZED USE, MANUFACTURE OR REPRODUCTION IN WHOLE OR IN PART IS PROHIBITED. DRAWING, DESIGN AND OTHER DISCLOSURES PROPERTY OF EATON FILTRATION, LLC

ELECTRONIC FILE NAME: HD1612TS.DWG  
REF. EGR E824 DATE 09/19/07