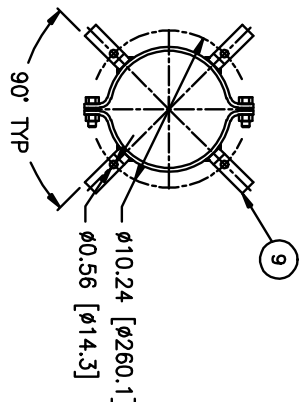
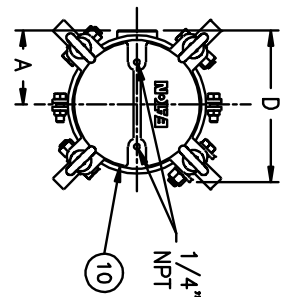


| ITEM NUMBER | VESSEL CODE | BAG SIZE | A IN. / MM | B IN. / MM | C IN. / MM | D IN. / MM | E IN. / MM | F IN. / MM | G IN. / MM | FLOW RATE GPM (MAX) | WEIGHT LBS / KGS |
|-----------------|---------------------|----------|------------|-------------|--------------|------------|--------------|-------------|------------|---------------------|------------------|
| SBL101CS2NSBSP0 | FRF2-0101-CS10-020N | 01 | 4.80 / 122 | 18.39 / 467 | 25.25 / 641 | 9.88 / 251 | 35.55 / 903 | 19.10 / 485 | 7.68 / 195 | 90 | 37 / 16.8 |
| SBL102CS2NSBSP0 | FRF2-0102-CS10-020N | 02 | 4.80 / 122 | 33.55 / 852 | 40.41 / 1026 | 9.88 / 251 | 66.50 / 1689 | 19.10 / 485 | 7.68 / 195 | 180 | 50 / 22.7 |

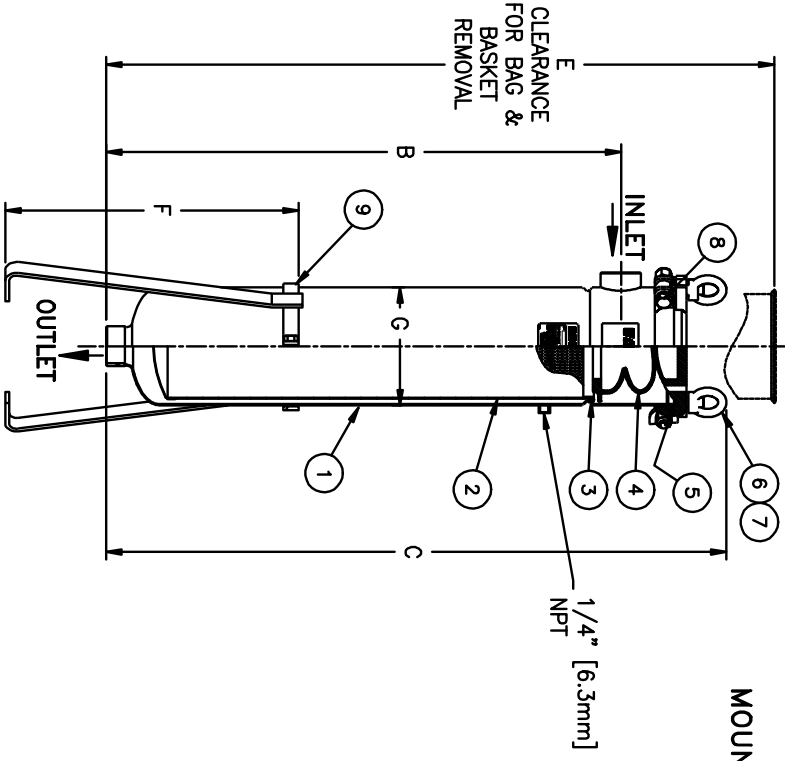


MOUNTING DETAIL

| NO. | PART NAME | MATERIAL |
|-----|-------------------|---------------------|
| 1 | BODY | CARBON STEEL |
| 2 | RESTRAINER BASKET | 316 STAINLESS STEEL |
| 3 | BASKET O-RING | BUNA-N |
| 4 | BAG HOLD DOWN | KYNAR PUDF |
| 5 | O-RING | BUNA-N |
| 6 | EYE BOLT | STEEL, ZINC PLATED |
| 7 | EYE NUT | STEEL, ZINC PLATED |
| 8 | BOLT | STEEL, ZINC PLATED |
| 9 | LEGS | CARBON STEEL |
| 10 | COVER | CARBON STEEL |

NOTES:

1. INLET/OUTLET 2" NPT CONNECTIONS
2. MAWP: 150 PSI @ 250° F (-20° F @ 150 PSI (10.3 BAR @ 121.1° C) (-28.9° C @ 10.3 BAR) MIDMT:
3. MAXIMUM OPERATING TEMP. 250° F (121.1° C)
4. PAINT C/STL. PER EATON STANDARD ES-301.



ELECTRONIC FILE NAME: FBF211XC.dwg
 REF. EOR DATE 02/09/10
 UNAUTHORIZED USE, MANUFACTURE OR REPRODUCTION IN WHOLE OR IN PART IS PROHIBITED. DRAWING, DESIGN AND OTHER DISCLOSURES PROPERTY OF EATON FILTRATION, LLC

EATON

EATON FILTRATION, LLC
 70 WOOD AVENUE SOUTH, ISELIN, NEW JERSEY 08830

NAME: FLOWLINE II FILTER VESSEL
 2" NPT THREADED CONNECTION
 CARBON STEEL

CERTIFIED FOR:
 P.O. NO.:
 SALES ORDER NO.:
 QUANTITY:
 TAG NO.:
 FILTER BAG:

DRAWN: MAQ DATE: 02/09/10 CERT. DATE: REV: A

| | | |
|------|----------|-----|
| SIZE | DWG NO | REV |
| A | FBF211XC | A |