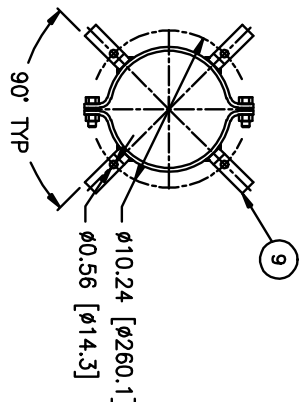
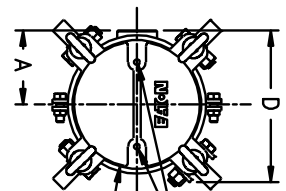


ITEM NUMBER	VESSEL CODE	BAG SIZE	A IN. / MM	B IN. / MM	C IN. / MM	D IN. / MM	E IN. / MM	F IN. / MM	G IN. / MM	FLOW RATE GPM (MAX)	WEIGHT LBS / KGS
SBL101S42NSBSP0	FBR2-0101-BB10-020N	01	4.80 / 122	18.39 / 467	25.25 / 641	9.88 / 251	35.55 / 903	19.10 / 485	7.68 / 195	90	37 / 16.8
SBL102S42NSBSP0	FBR2-0102-BB10-020N	02	4.80 / 122	33.55 / 852	40.41 / 1026	9.88 / 251	66.50 / 1689	19.10 / 485	7.68 / 195	180	50 / 22.7

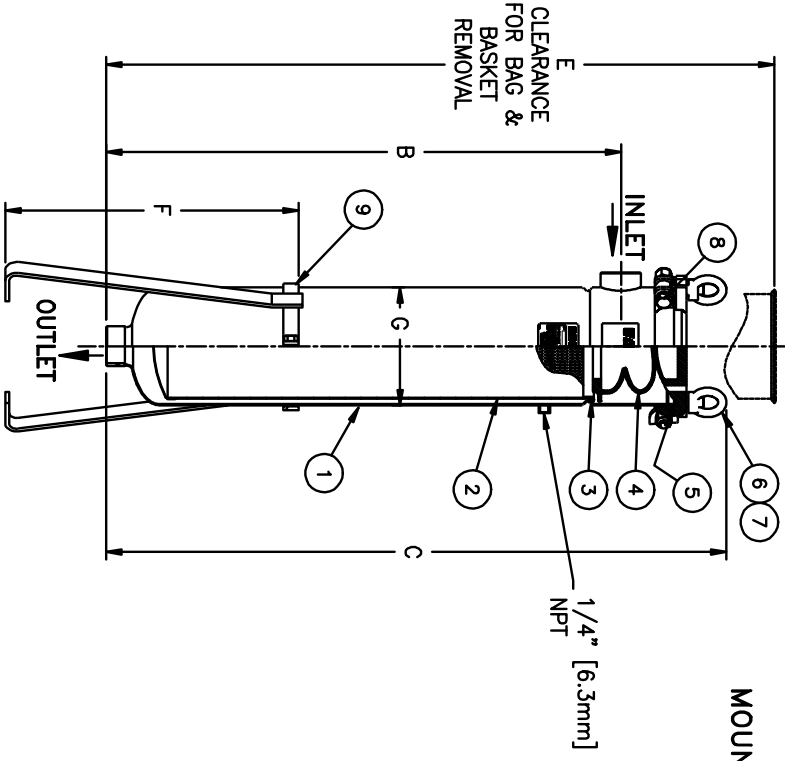


MOUNTING DETAIL

NO.	PART NAME	MATERIAL
1	BODY	304 STAINLESS STEEL
2	RESTRAINER BASKET	316 STAINLESS STEEL
3	BASKET O-RING	BUNA-N
4	BAG HOLD DOWN	KYNAR PUDF
5	O-RING	BUNA-N
6	EYE BOLT	STEEL, ZINC PLATED
7	EYE NUT	STEEL, ZINC PLATED
8	BOLT	STEEL, ZINC PLATED
9	LEGS	CARBON STEEL
10	COVER	304 STAINLESS STEEL

NOTES:

1. INLET/OUTLET 2" NPT CONNECTIONS
2. MAWP: 150 PSI @ 250° F (-20° F @ 150 PSI (10.3 BAR @ 121.1° C) (-28.9° C @ 10.3 BAR) MIDMT:
3. MAXIMUM OPERATING TEMP. 250° F (121.1° C)



ELECTRONIC FILE NAME: FBR211XS-304.dwg  
 REF. EOR DATE 02/08/10  
 UNAUTHORIZED USE, MANUFACTURE OR REPRODUCTION IN WHOLE OR IN PART IS PROHIBITED. DRAWING, DESIGN AND OTHER DISCLOSURES PROPERTY OF EATON FILTRATION, LLC

CERTIFIED FOR:  
 P.O. NO.:  
 SALES ORDER NO.:  
 QUANTITY:  
 TAG NO.:  
 FILTER BAG:

**EATON**  
 70 WOOD AVENUE SOUTH, ISELIN, NEW JERSEY 08830

**EATON FILTRATION, LLC**  
 FLOWLINE II FILTER VESSEL  
 2" NPT THREADED CONNECTION  
 STAINLESS STEEL-304

DRAWN	MAQ	DATE	02/08/10	CERT.	DATE
SIZE	DWG NO	FBR211XS-304		REV	A