

# Model 2596

## 2"–36"

*Eaton's Model 2596 fabricated automatic self-cleaning pipeline strainers are available in 2", 3", 4", 4L", 6", 8", 10", 12", 14", 16", 18", 20", 24", 30", 36" and special or bigger sizes upon request. Continuous flow, simplified maintenance and worry-free operation characterize the Model 2596 across numerous industries.*



### Features / Benefits

- Flow rates up to 7,949 m<sup>3</sup>/h
- A broad selection of screen options
- Automatic backwashing
- Exclusive idL™ seal for leak free service, available up to 30" only
- Unitized modular assembly for easy maintenance
- Fabricated carbon steel construction

### Options

- Various grades of stainless steel, copper nickel, MONEL® and other exotic materials of construction
- "AD 2000-Merkblätter", DIN EN 13446 or ASME Code and approval according to PED (modules H, H1 or G) available
- Flanged, screwed or socket weld backwash connections
- Internal and external epoxy paint or other coatings, upon request, on all carbon steel components for fresh water service applications
- Custom designs are available upon request

The Eaton Model 2596 automatic self-cleaning strainer is designed for the continuous removal of entrained solids from liquids in pipeline systems.

With an automated control system monitoring the strainer operation, cleaning is accomplished by an integral backwash system. A small portion of the screen element is isolated and cleaned by reverse flow while the remaining screen area continues to strain—providing uninterrupted flow. This efficient design uses only a small amount of the liquid being strained to carry debris away from the strainer element.

The Model 2596 features the idL shaft seal that positively prevents leakage from the backwash shaft at the top of the strainer. This unique quad seal keeps the exterior of the strainer dry and prevents external leakage or weeping of the process media down the sides of the strainer.

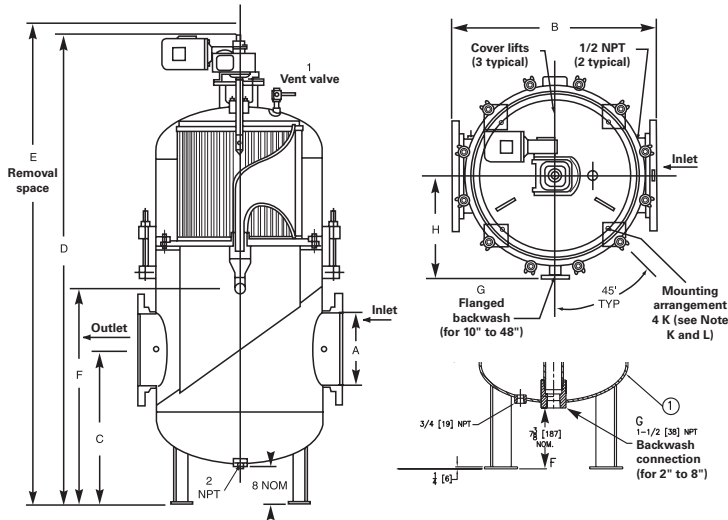
To simplify maintenance the Model 2596 features a unitized modular assembly. The motor, gear reducer and the internal operating mechanism are housed within the strainer cover and lift off as a unit. This makes all components easily accessible and reduces associated maintenance costs.

MONEL® is a registered trademark of Special Metals Corporation group of Companies.



Powering Business Worldwide

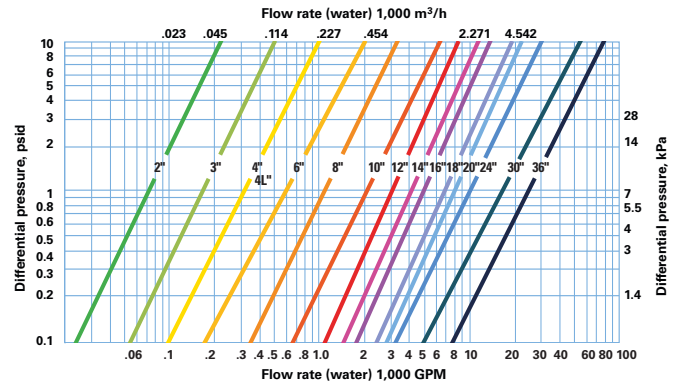
# Model 2596 2"-36" Fabricated Automatic Self-cleaning Strainers



Dimensions are for reference only. For installation purposes, request certified drawings.

Note:  
 K= Diameter bolt hole (4) required 90° apart  
 L= Diameter bolt circle

Model 2596 2"-36" Flow rates\*



\*Special or bigger sizes upon request.

Pressure drop data indicates results to be expected with clean water, under normal flows with standard screens and in clean strainer.

A	B	Approximate dimensions (in / mm)		D	E	F	G	H	K	L	Approximate weight (kg)		
		C	D								Dry	Wet	Cover
2"	22 / 560	25.6 / 650	53 / 1,350	55 / 1,400	5 / 130	1 / 25	-	-	1/2 / 12	17.5 / 445	155	205	70
3"	22 / 560	25.6 / 650	53 / 1,350	55 / 1,400	5 / 130	1 / 25	-	-	1/2 / 12	17.5 / 445	160	210	70
4"	22 / 560	25.6 / 650	53 / 1,350	55 / 1,400	5 / 130	1 / 25	-	-	1/2 / 12	17.5 / 445	170	220	70
4L"	26 / 660	28 / 710	73 / 1,850	75 / 1,900	8 / 200	1 1/2 / 40	-	-	0.7 / 18	18 / 460	275	415	120
6"	26 / 660	28 / 710	73 / 1,850	75 / 1,900	8 / 200	1 1/2 / 40	-	-	0.7 / 18	18 / 460	280	420	120
8"	26 / 660	28 / 710	73 / 1,850	75 / 1,900	8 / 200	1 1/2 / 40	-	-	0.7 / 18	18 / 460	290	430	120
10"	38 / 965	30 / 762	88 / 2,235	90 / 2,286	40 / 1,016	2 / 50.8	16 / 406	-	3/4 / 19.05	22-13 / 100 / 562	544	1,089	295
12"	42 / 1,067	30 / 762	88 / 2,235	90 / 2,286	40 / 1,016	2 / 50.8	18 / 457	-	3/4 / 19.05	26-13 / 100 / 664	590	1,225	318
14"	44 / 1,118	32 / 813	101 / 2,565	103 / 2,616	46 / 1,168	2 / 50.8	22 / 559	-	7/8 / 22.23	32-13 / 100 / 816	907	1,996	386
16"	44 / 1,118	33 / 838	101 / 2,565	103 / 2,616	46 / 1,168	2 / 50.8	22 / 559	-	7/8 / 22.23	32-13 / 100 / 816	930	2,019	386
18"	50 / 1,270	36 / 914	117 / 2,972	120 / 3,048	48 / 1,219	3 / 76.2	23 / 584	-	7/8 / 22.23	34-13 / 100 / 867	1,588	3,765	581
20"	54 / 1,372	37 / 940	120 / 3,048	123 / 3,124	50 / 1,270	3 / 76.2	25 / 635	-	7/8 / 22.23	38-13 / 100 / 969	1,678	4,536	671
24"	54 / 1,372	39 / 991	124 / 3,150	127 / 3,226	54 / 1,372	3 / 76.2	25 / 635	-	7/8 / 22.23	38-13 / 100 / 969	1,737	4,609	671
30"	64 / 1,626	51 / 1,295	147 / 3,734	151 / 3,835	76 / 1,930	3 / 76.2	30 / 762	-	7/8 / 22.23	48-13 / 100 / 1,223	2,268	6,078	907
36"	84 / 2,134	56 / 1,422	176 / 4,470	182 / 4,623	72 / 1,829	6 / 152.4	37 / 940	-	1-1/8 / 28.58	66 / 1,676	4,246	11,220	2,050

Special and bigger sizes can be fabricated upon request.

\* backwash in the middle of the bottom

## Sizes 2" through 36"

### Application limits

Fabricated strainers are designed within the limits of the customer's specifications and design criteria along with any applicable code requirement, i.e. ASME Section VIII Div. 1.

Specific descriptions and construction details illustrated may vary slightly from equipment furnished. Eaton reserves the right to revise or discontinue equipment or design features without notice. Eaton recommends that you review performance and application data with us prior to final design.

### Model 2596 C<sub>v</sub> factors\*

Size	2"	3"	4"	6"	8"	10"	12"	14"	16"	18"	20"	24"	30"
Value	78	163	295	580	1,150	2,050	3,050	4,150	5,100	6,900	8,100	10,100	16,900

\* For water with clean, perforated basket

**North America**  
 44 Apple Street  
 Tinton Falls, NJ 07724  
 Toll Free: 800 656-3344  
 (North America only)  
 Tel: +1 732 212-4700

**Greater China**  
 No. 7, Lane 280,  
 Linhong Road  
 Changning District, 200335  
 Shanghai, P.R. China  
 Tel: +86 21 5200-0099

**Europe/Africa/Middle East**  
 Auf der Heide 2  
 53947 Nettersheim, Germany  
 Tel: +49 2486 809-0  
  
 Friedensstraße 41  
 68804 Altlußheim, Germany  
 Tel: +49 6205 2094-0

**Asia-Pacific**  
 100G Pasir Panjang Road  
 #07-08 Interlocal Centre  
 Singapore 118523  
 Tel: +65 6825-1668

An den Nahewiesen 24  
 55450 Langenlonsheim, Germany  
 Tel: +49 6704 204-0

For more information, please  
 email us at [filtration@eaton.com](mailto:filtration@eaton.com)  
 or visit [www.eaton.com/filtration](http://www.eaton.com/filtration)

© 2022 Eaton. All rights reserved. All trademarks and registered trademarks are the property of their respective owners. All information and recommendations appearing in this brochure concerning the use of products described herein are based on tests believed to be reliable. However, it is the user's responsibility to determine the suitability for his own use of such products. Since the actual use by others is beyond our control, no guarantee, expressed or implied, is made by Eaton as to the effects of such use or the results to be obtained. Eaton assumes no liability arising out of the use by others of such products. Nor is the information herein to be construed as absolutely complete, since additional information may be necessary or desirable when particular or exceptional conditions or circumstances exist or because of applicable laws or government regulations.

