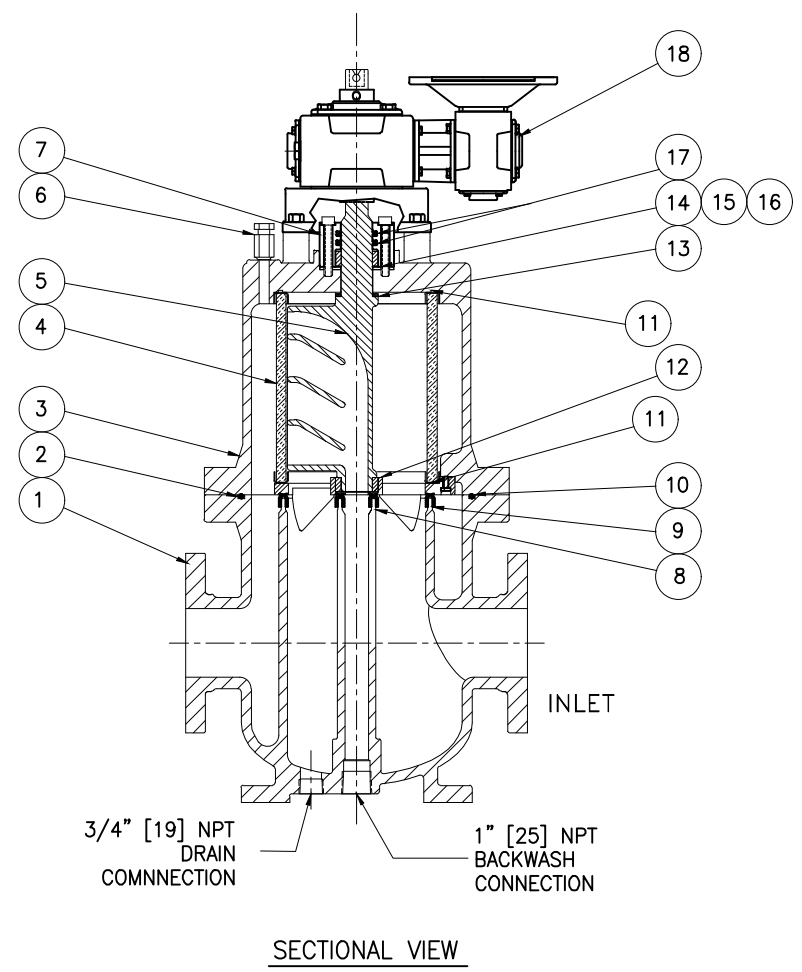
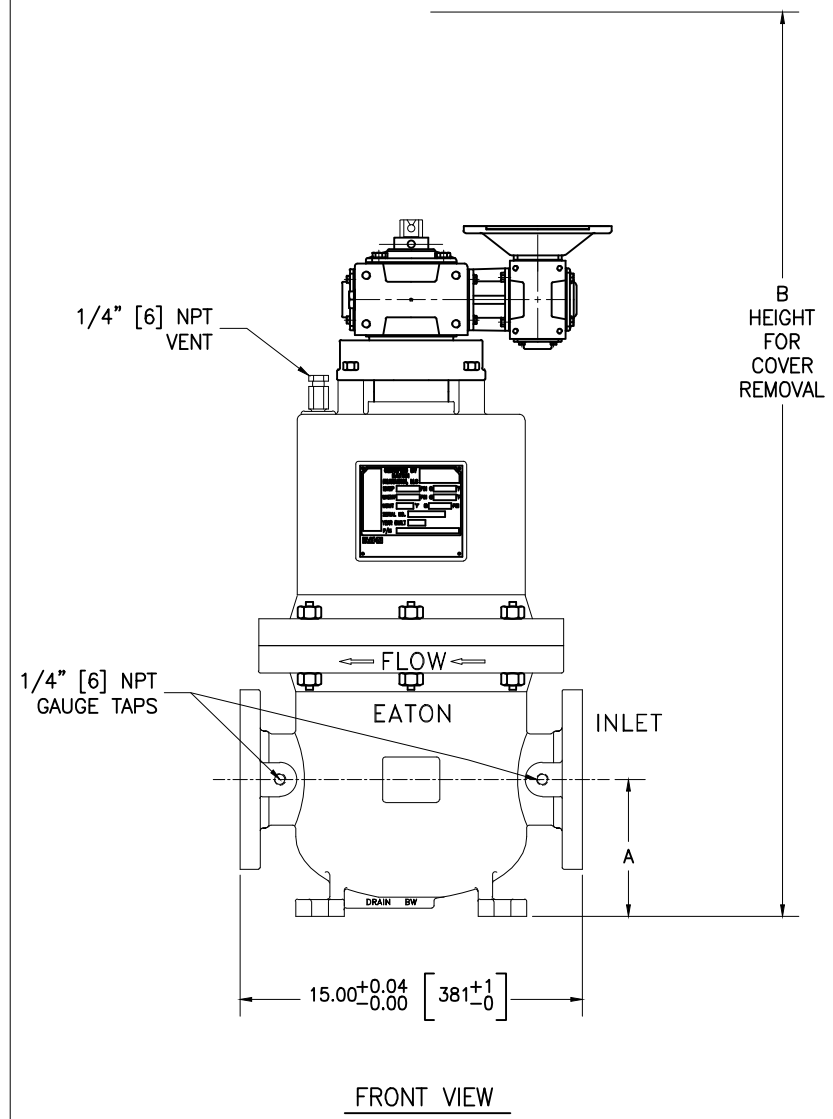
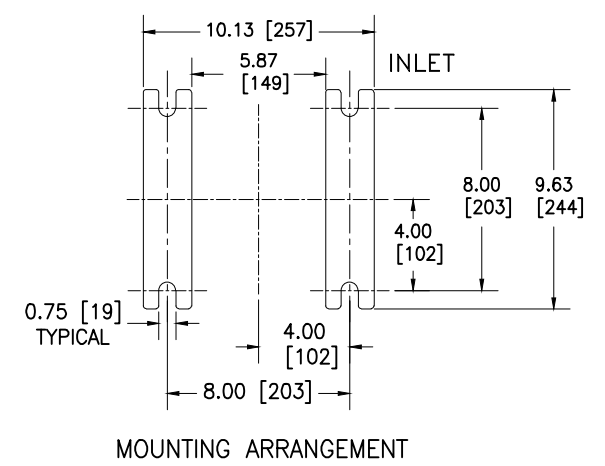


PIPE SIZE (NOMINAL)	DIMENSIONS		WEIGHT			PART NUMBER
	A IN.	MM.	B IN.	MM.	COVER LB. KG.	
2" (50mm)	6 / 153	42.50 / 1080	156 / 71	302 / 137	356 / 162	25960200063
3" (75mm)	6 / 153	42.50 / 1080	156 / 71	316 / 144	371 / 169	25960300063
4" (100mm)	7 / 178	44 / 1118	156 / 71	324 / 147	384 / 175	25960400063



NO.	PART NAME	MATERIAL
1	BODY	A278 CL.30
2	COVER	A278 CL.30
3	CENPELLER SUPPORT	316 STAINLESS STEEL
4	STRAINING ELEMENT	316 STAINLESS STEEL
5	BACKWASH ARM-SHAFT	316 STAINLESS STEEL
6	VENT	BRASS
7	idL™ HOUSING	316 STAINLESS STEEL
8	INNER SEAL	BUNA-N
9	OUTER SEAL	BUNA-N
10	GIRTH O-RING	BUNA-N
11	ELEMENT O-RING	BUNA-N
12	LOWER BUSHING	COMPOSITE
13	SHAFT WASHER	NYLON
14	SHAFT GASKET	BUNA-N
15	UPPER BUSHING RING	TEFLON
16	UPPER BUSHING	COMPOSITE
17	SHAFT SEAL RINGS	BUNA-N
18	GEAR REDUCER	CAST IRON

- NOTES:
1. INLET AND OUTLET CONNECTIONS PER DIN2533 / BS4504 PN16 FLANGE.
 2. FOR REPLACEMENT PARTS, MODEL NO., SIZE AND SERIAL NUMBER FROM THE STRAINER NAMEPLATE MUST BE FURNISHED.
 3. DESIGN PRESSURE: 200 PSI @ 150° F [13.8 BAR @ 65.5° C]



CERTIFIED FOR:
P.O. NO.:
REG. NO.:
QUOTE NO.:
TAG NO.:
NUMBER OF UNITS:
STRAINING ELEMENT:

EATON FILTRATION, LLC
900 FAIRMOUNT AVENUE, ELIZABETH, NEW JERSEY 07207

NAME: MODEL 2596 AUTOMATIC STRAINER
PN16 FLANGE CAST IRON
SIZES 2" (50 mm) THROUGH 4" (100 mm)

DRAWN	FM	DATE	6/8/07	CERT.	LH	DATE	6/8/07
SIZE	DWG	SD2596C4				REV	C
B	NO						

ELECTRONIC FILE NAME: SD2596C4.DWG
REF. ECR 0038168 DATE 12/10/09

UNAUTHORIZED USE, MANUFACTURE OR REPRODUCTION IN WHOLE OR IN PART IS PROHIBITED. DRAWING, DESIGN AND OTHER DISCLOSURES PROPERTY OF EATON FILTRATION, LLC