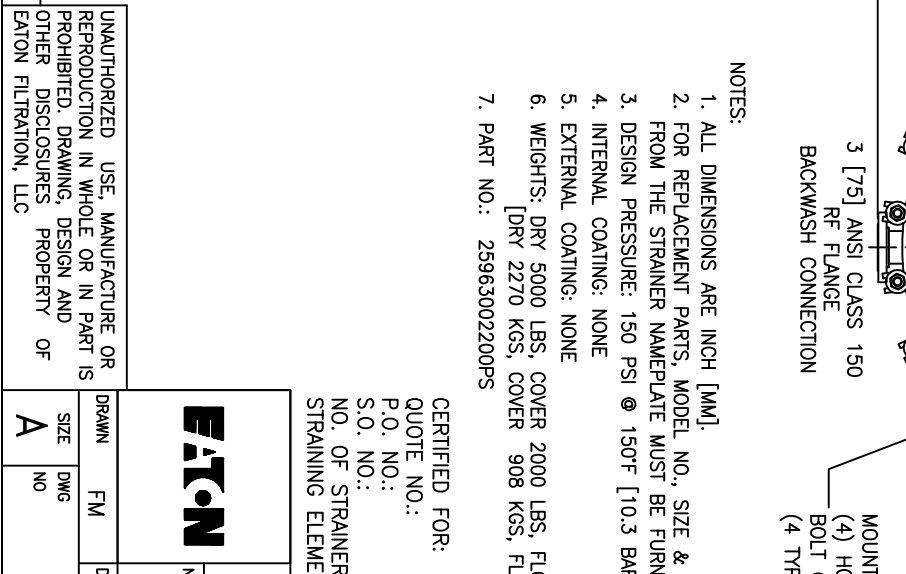
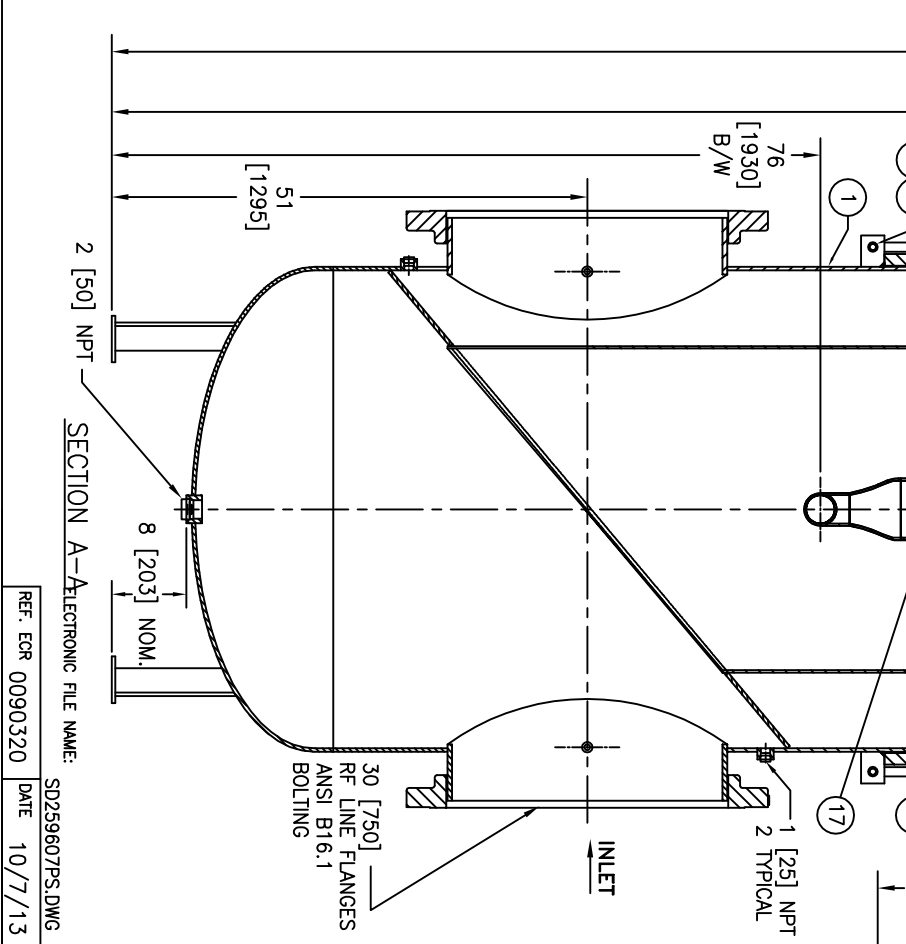


| NO. | PART NAME | MATERIAL |
|-------|-----------------------|---------------------|
| 1 | BODY | STAINLESS STEEL |
| 2 | COVER | STAINLESS STEEL |
| 3 | STRAINING ELEMENT | 316 STAINLESS STEEL |
| 4 | BACKWASH SHAFT | STAINLESS STEEL |
| 5 | BACKWASH ARM | STAINLESS STEEL |
| 6A,6B | TOP PORT/LOWER PORT | STAINLESS STEEL |
| 7 | B/W ARM DRIVE PIN | STAINLESS STEEL |
| 8 | B/W ARM NUT | STAINLESS STEEL |
| 9 | QUAD RING | BRUNA |
| 10 | PACKING PILOT BUSHING | COMPOSITE |
| 11 | EYE BOLT | CARBON STL ZINC PL. |
| 12 | EYE BOLT PIN | CARBON STL ZINC PL. |
| 13 | RETAINING RING | CARBON STL ZINC PL. |
| 14,15 | HEX NUT, WASHER | CARBON STL ZINC PL. |
| 16 | LOWER SUPPORT RING | STAINLESS STEEL |
| 17 | LOWER BUSHING | COMPOSITE |
| 18 | GIRTH O-RING | NITRILE |
| 19 | SHAFT DRIVE PIN | STAINLESS STEEL |
| 20 | COTTER PIN | STAINLESS STEEL |
| 21,22 | STOP NUT, SPACER | CARBON STEEL |
| 23 | VENT VALVE, NIPPLE | STAINLESS STEEL |
| 24 | GEAR REDUCER | CAST IRON |
| 25 | MOTOR | 1/3 HP |



- NOTES:
1. ALL DIMENSIONS ARE INCH [MM].
 2. FOR REPLACEMENT PARTS, MODEL NO., SIZE & SERIAL NO. FROM THE STRAINER NAMEPLATE MUST BE FURNISHED.
 3. DESIGN PRESSURE: 150 PSI @ 150°F [10.3 BARS @ 65.5°C]
 4. INTERNAL COATING: NONE
 5. EXTERNAL COATING: NONE
 6. WEIGHTS: DRY 5000 LBS, COVER 2000 LBS, FLOODED 13400 LBS [DRY 2270 KGS, COVER 908 KGS, FLOODED 6084 KGS]
 7. PART NO.: 25963002200PS

CERTIFIED FOR:
 QUOTE NO.:
 P.O. NO.:
 S.O. NO.:
 NO. OF STRAINERS:
 STRAINING ELEMENT:

EATON

EATON FILTRATION, LLC

44 APPLE ST. TINTON FALLS, NEW JERSEY 07724 U.S.A.

NAME: 30" [750] MODEL 2596
 AUTOMATIC STRAINER - FABRICATED
 STAINLESS STEEL - QUAD SEAL

| | | | | | | | |
|-------|-----|------|----------|-------|----|------|----------|
| DRAWN | FM | DATE | 10/14/04 | CERT. | LH | DATE | 10/14/04 |
| SIZE | DWG | NO | A | REV | C | | |

SD259607PS

UNAUTHORIZED USE, MANUFACTURE OR REPRODUCTION IN WHOLE OR IN PART IS PROHIBITED. DRAWING, DESIGN AND OTHER DISCLOSURES PROPERTY OF EATON FILTRATION, LLC

REF: ECR 0090320 DATE 10/7/13

SD259607PS.DWG DATE 10/7/13

ELECTRONIC FILE NAME: SD259607PS.DWG

SECTION A-A

2 [50] NPT

8 [203] NOM.

51 [1295]

30 [750] RF LINE FLANGES ANSI B16.1 BOLTING

1 [25] NPT 2 TYPICAL

INLET

76 [1930] B/W

147 [3734]

151 [3835] REMOVAL SPACE

19 20 21 22

23

24

25

1 [25] VENT VALVE

3

5

6A

7

8

9

10

11

12

13

14

15

16

17

18

19

20

21

22

23

24

25

64 [1626]

30 [750] RF FLANGE BACKWASH CONNECTION

45° TYP

3 [75] ANSI CLASS 150 RF FLANGE BACKWASH CONNECTION

1/2 [13] NPT 2 TYPICAL

3 TYPICAL COVER LIFTS

MOUNTING ARRANGEMENT (4) HOLES 7/8 [22] BOLT CIRCLE 48.13 [1222] (4 TYPICAL)

SECTION A-A

2 [50] NPT

8 [203] NOM.

51 [1295]

30 [750] RF LINE FLANGES ANSI B16.1 BOLTING

1 [25] NPT 2 TYPICAL

INLET

76 [1930] B/W

147 [3734]

151 [3835] REMOVAL SPACE

19 20 21 22

23

24

25

1 [25] VENT VALVE

3

5

6A

7

8

9

10

11

12

13

14

15

16

17

18

19

20

21

22

23

24

25

64 [1626]

30 [750] RF FLANGE BACKWASH CONNECTION

45° TYP

3 [75] ANSI CLASS 150 RF FLANGE BACKWASH CONNECTION

1/2 [13] NPT 2 TYPICAL

3 TYPICAL COVER LIFTS

MOUNTING ARRANGEMENT (4) HOLES 7/8 [22] BOLT CIRCLE 48.13 [1222] (4 TYPICAL)