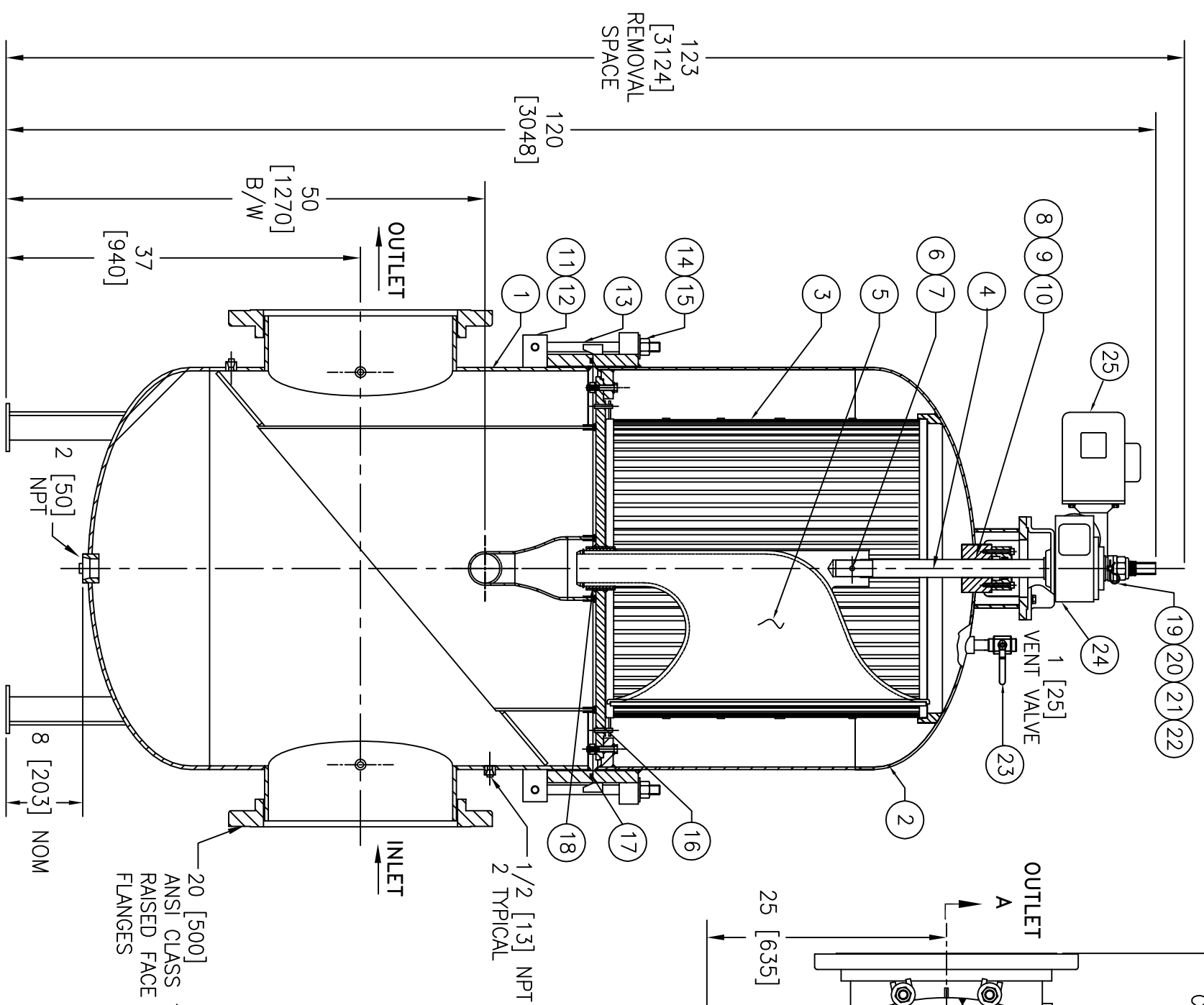
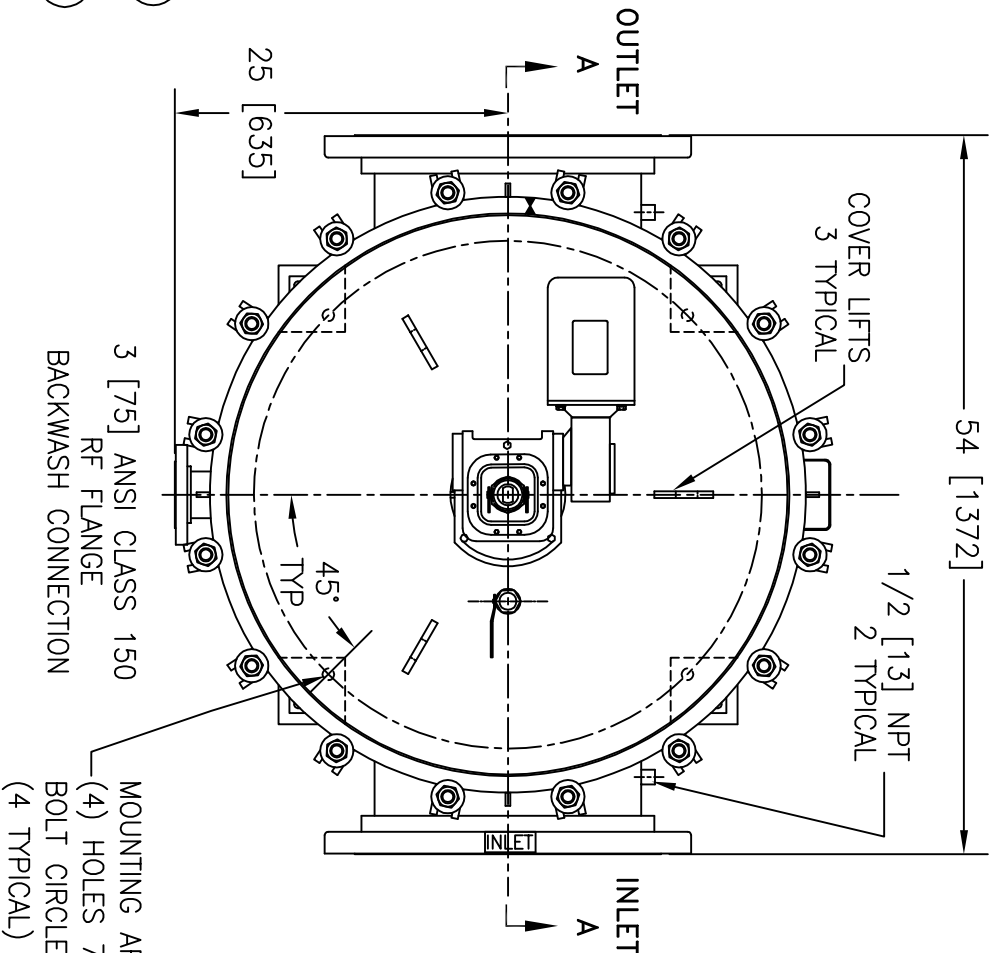


NO.	PART NAME	MATERIAL
1	BODY	STAINLESS STEEL
2	COVER	STAINLESS STEEL
3	STRAINING ELEMENT	316 STAINLESS STEEL
4	BACKWASH SHAFT	STAINLESS STEEL
5	BACKWASH ARM ASSEMBLY	STAINLESS STEEL
6	B/W ARM NUT	STAINLESS STEEL
7	B/W ARM DRIVE PIN	STAINLESS STEEL
8	BEARING HOUSING	STAINLESS STEEL
9	QUAD SEAL	BUNA
10	PILOT PACKING BUSHING	COMPOSITE
11	EYE BOLT PIN	CARBON STL ZINC PL.
12	RETAINING RING	CARBON STL ZINC PL.
13	EYE BOLT	CARBON STL ZINC PL.
14,15	HEX NUT, WASHER	CARBON STL ZINC PL.
16	LOWER SUPPORT RING	STAINLESS STEEL
17	GIRTH O-RING	NITRILE
18	LOWER BUSHING	COMPOSITE
19	SHAFT DRIVE PIN	STAINLESS STEEL
20	COTTER PIN	STAINLESS STEEL
21,22	STOP NUT, SPACER	CARBON STEEL
23	VENT VALVE, NIPPLE	STAINLESS STEEL
24	GEAR REDUCER	CAST IRON
25	MOTOR	1/3 HP



NOTES:

1. ALL DIMENSIONS ARE INCH [MM].
2. FOR REPLACEMENT PARTS, MODEL NO., SIZE & SERIAL NO. FROM THE STRAINER NAMEPLATE MUST BE FURNISHED.
3. DESIGN PRESSURE: 150 PSI @ 150°F [10.3 BARS @ 65.5°C]
4. INTERNAL COATING: NONE
5. EXTERNAL COATING: NONE
6. WEIGHTS: DRY 3700 LBS, COVER 1480 LBS, FLOODED 10000 LBS [DRY 1680 KGS, COVER 672 KGS, FLOODED 4540 KGS]
7. PART NO.: 25962002200PS

CERTIFIED FOR:
 QUOTE NO.:
 P.O. NO.:
 S.O. NO.:
 NO. OF STRAINERS:
 STRAINING ELEMENT:

ELECTRONIC FILE NAME: SD259605PS.DWG
 DATE 10/7/13
 REF. ECR 0090320

UNAUTHORIZED USE, MANUFACTURE OR REPRODUCTION IN WHOLE OR IN PART IS PROHIBITED. DRAWING, DESIGN AND OTHER DISCLOSURES PROPERTY OF EATON FILTRATION, LLC

EATON

44 APPLE ST. TINTON FALLS, NEW JERSEY 07724 U.S.A.

EATON FILTRATION, LLC

NAME: 20" [500] MODEL 2596
 AUTOMATIC STRAINER - FABRICATED
 STAINLESS STEEL - QUAD SEAL

DRAWN: FM DATE: 10/21/04 CERT: LH DATE: 10/21/04

SIZE: A DWG NO: SD259605PS REV: C